

the new ford**focus**





Your car can say a lot about you.

Ford Focus says that you no longer have to accept compromise. You don't have to sacrifice style for space or performance for economy.

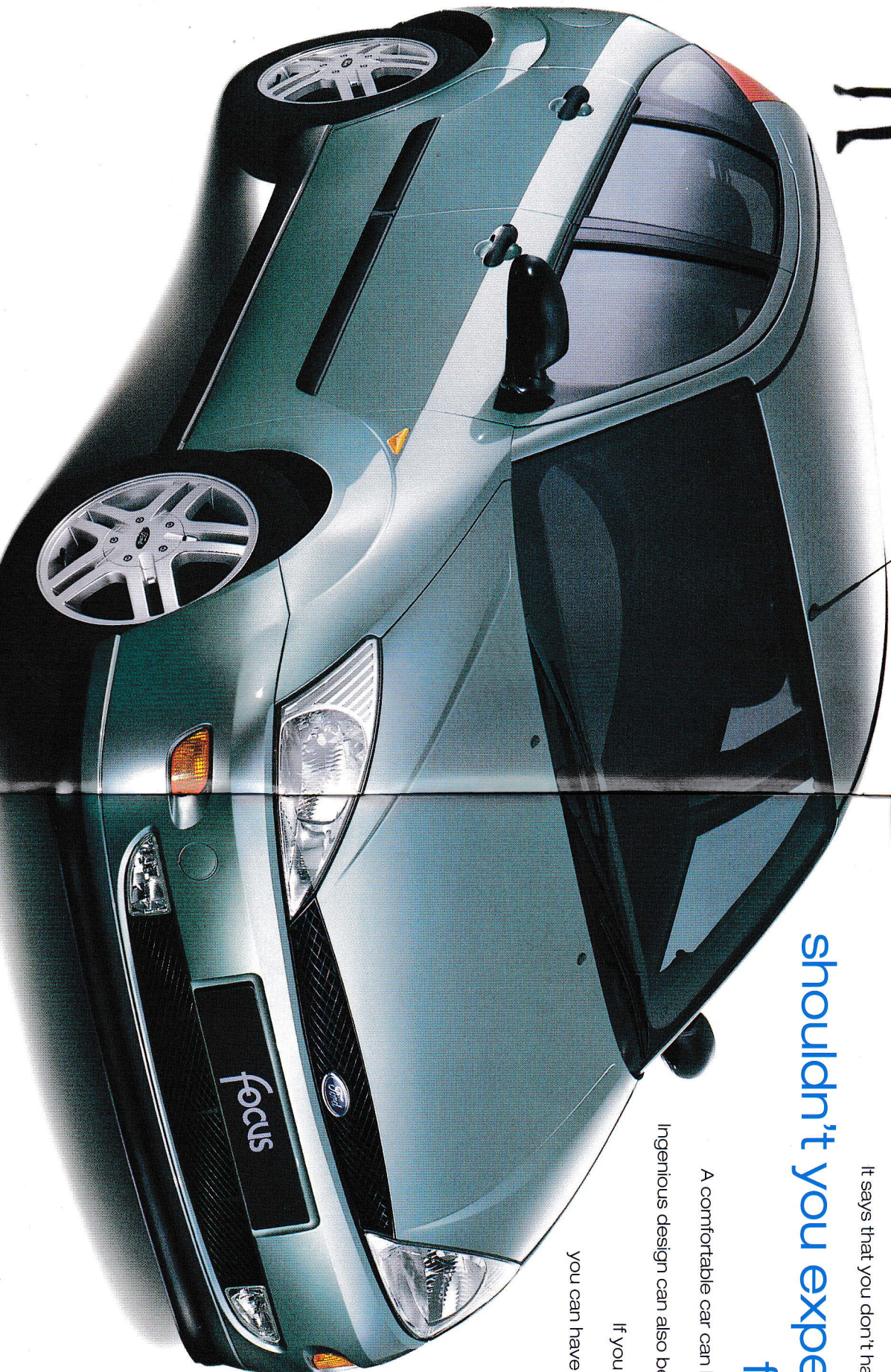
It says that you don't have to be big to be safe.

shouldn't you expect **more** from life?

A comfortable car can be dynamically exciting.

Ingenious design can also be remarkably functional.

If you expect more out of life, you can have more, with Ford Focus.



one fordfocus

Whether you favour the smart and practical

CL or the refined and sporty Zetec,

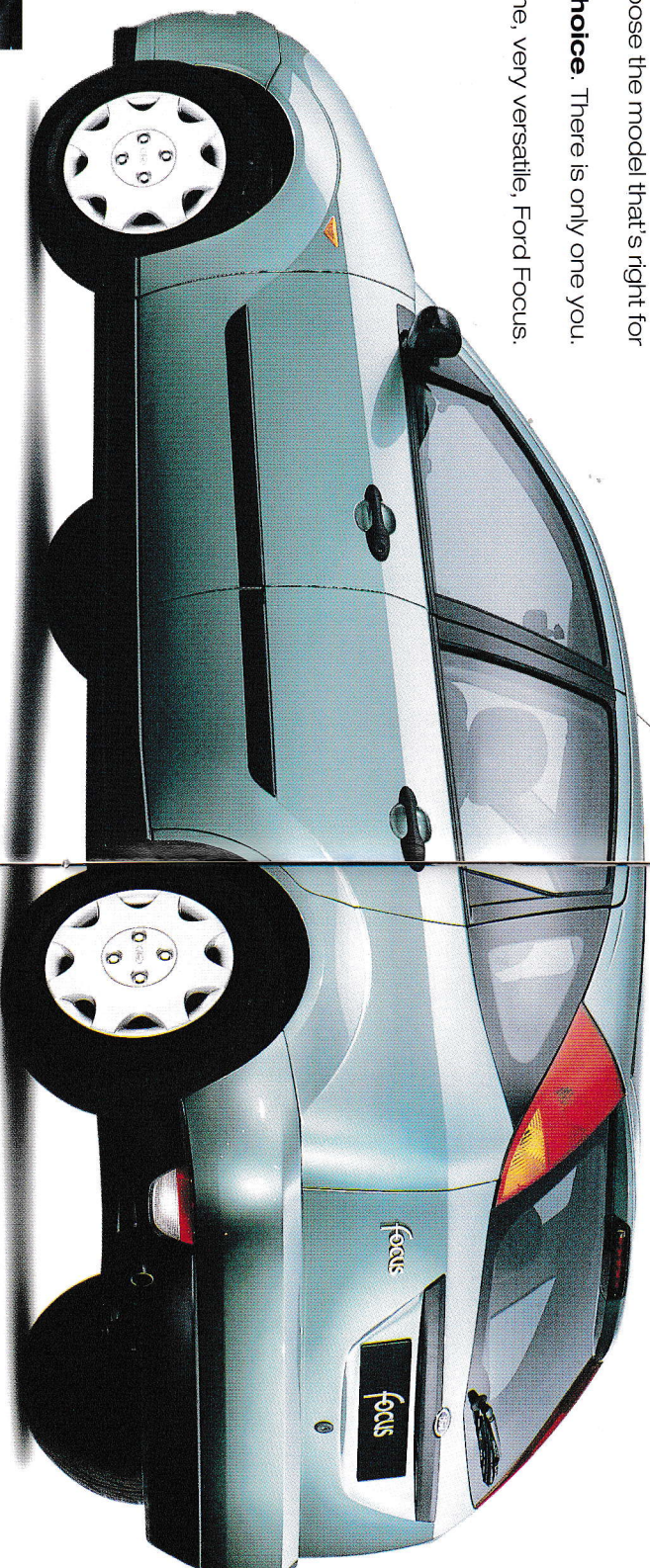
the stylish LX or the luxurious Ghia, Ford

Focus gives you the opportunity to express

yourself. To choose the model that's right for

you – **freechoice**. There is only one you.

There is only one, very versatile, Ford Focus.



fordfocus LX

With LX you'll find as standard a sunroof, remote control central, double locking and remote control tailgate release and an RDS stereo radio/cassette with ergonomically-designed steering column remote controls.

fordfocus Zetec

With its dynamic image, Zetec offers remote central, double locking and sporting cues including firmer suspension, alloy wheels and front fog lights.

fordfocus Ghia

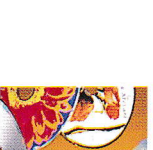
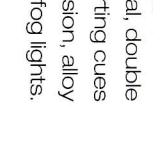
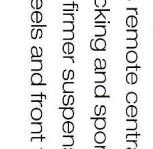
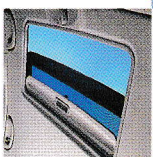
If you expect more luxury, take a closer look at Ghia. Standard features include air conditioning, 'Quickclear' heated windscreen, driver's power seat height adjust, and electrically-operated and heated door mirrors with body colour surrounds.

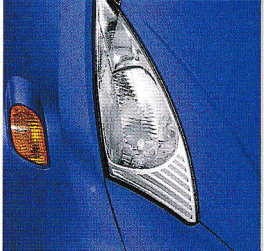
fordfocus Ghia 2.0i

Anti-lock brakes and traction control, 15" alloy wheels, CD autochanger and power front and rear windows with global close, adds an extra dimension to Ghia.

fordfocus CL

If you expect more from CL, you won't be disappointed with standard features including central locking, electric front windows, power steering, driver's and front passenger's airbags* and Safeguard engine immobiliser.

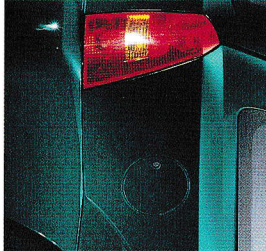




amparobblue



pacificgreen



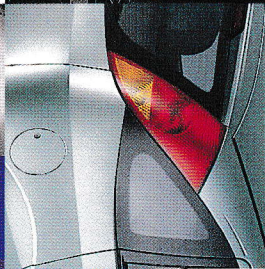
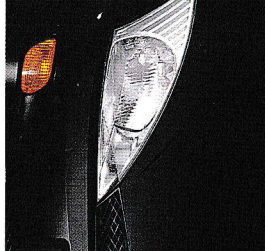
With eleven paint finishes to choose from, including three metallics and five mica metallics, it has never been easier to create a lasting impression.

colour withstyle

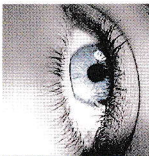
diamondwhite



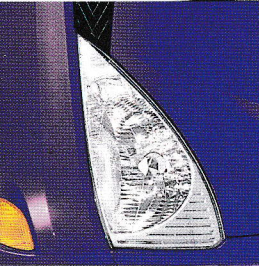
pantherblack



aquafrost



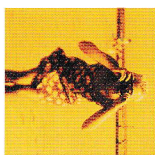
brightblue



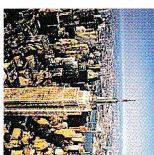
peppered



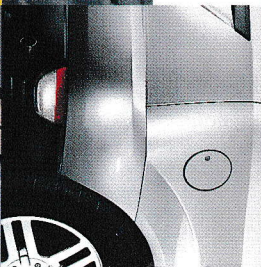
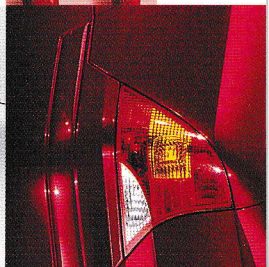
**moon dust
silver**



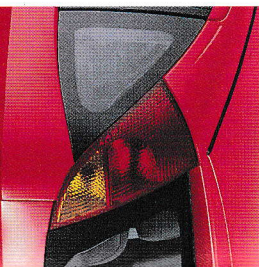
harvestgold



stateblue



radiantred



Imagine a car built around you from the inside out.

A car which delivers space, comfort and versatility in equal measure.

This is the new thinking that shaped the Ford Focus interior.

We call it freespace. You'll call it space to be yourself, whoever you are.

freespace



fordfocus Zetec

why settle for less?

- Striking New Edge design
- Independent rear suspension delivering outstanding driving dynamics
- Class-leading head and leg room
- Low-friction engine design delivers excellent fuel economy without compromising on responsiveness

Ghia

2.0i adds:
Anti-lock brakes with EBD
Rear disc brakes
Traction control
Global window closing
Electric rear windows
CD autochanger
Fuel computer
15" alloy wheels
"Quickclear" windscreen
Powered/heated mirrors
Driver's lumbar support
Variable intermittent wipers
Air conditioning (in lieu of sunroof)
Column-mounted remote stereo controls
Leather steering wheel and gear lever knob
Front fog lights
Centre rear head restraint
Model 5000 RDS radio/cassette
Full wheel covers
Remote central, double locking
Driver's seat power height adjust
Rake/reach adjustable steering column
Electric front windows
Tinted glass
Power steering
Safeguard immobiliser
Passenger airbag
Driver's airbag

LX

Sunroof/manual tilt and slide
Remote stereo controls
Velour trim
Remote control boot release
Model 5000 RDS radio/cassette
Full wheel covers
Remote central, double locking
Driver's seat height adjust
Rake/reach adjustable steering column
Electric front windows
Tinted glass
Power steering
Safeguard immobiliser
Passenger airbag
Driver's airbag

Zetec

Sports seats
Leather steering wheel
Front fog lights
Centre rear head restraint
Model 4000T radio/cassette
Alloy wheels
Remote central, double locking
Driver's seat height adjust
Rake/reach adjustable steering column
Electric front windows
Tinted glass
Power steering
Safeguard immobiliser
Passenger airbag
Driver's airbag

CL

Model 4000T radio/cassette
Full wheel covers
Central locking
Driver's seat height adjust
Rake/reach adjustable steering column
Electric front windows
Tinted glass
Power steering
Safeguard immobiliser
Passenger airbag
Driver's airbag

fordrive

The easiest way to get to know your preferred Ford Feature Model is through our Fordrive Demonstration Programme. This gives you a complete test-drive experience professionally and efficiently, with the services of your own Fordrive coordinator.

Fordrive

experience**simplicity**

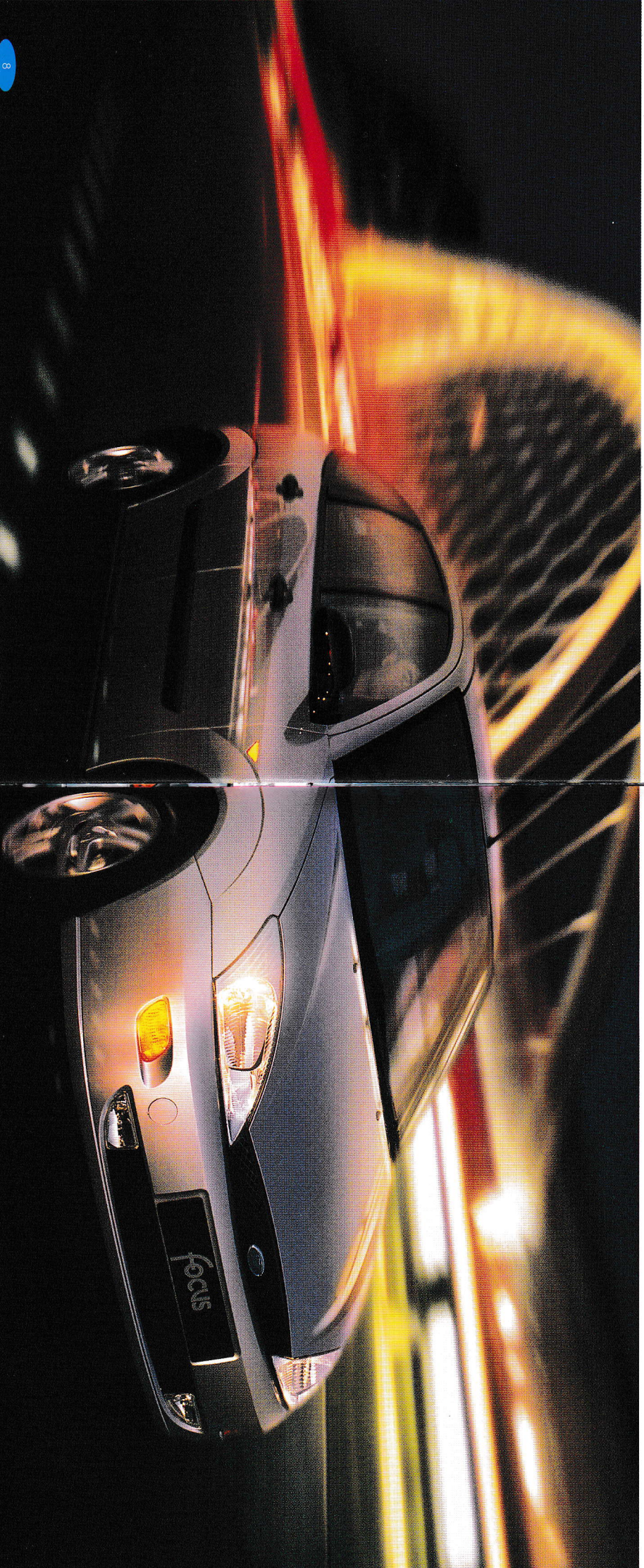
optimise

For a straightforward way of financing your chosen model, Ford Credit has developed Optimise, a range of financial packages that can be tailored to suit your needs. Simple to arrange and easy to understand, you're sure to find a finance plan that's right for you. Optimise your time and arrange your vehicle and finance together.

 **Optimise**
The way to finance your Ford

for **moreinformation**

To find the location of your nearest Ford Dealer, simply call the Ford Information Service on **0845 600 3000**, or visit the Ford Dealer locator at **www.ford.co.uk**



The Government fuel figures do not express or imply any guarantee of the fuel consumption of any particular car. The cars themselves have not been tested and there are inevitably differences between individual cars of the same model. In addition, a car may incorporate particular modifications. Furthermore, the driver's style and road and traffic conditions, as well as the extent to which the car has been driven and the standard of maintenance, will affect its fuel consumption.

Illustrations, descriptions and specifications.

This catalogue was correct at the time of going to print. However, Ford policy is one of continuous product development. The right is reserved to change specifications, colours and prices of the models and items illustrated and described in this publication at any time. For the latest details always consult your Ford Dealer.

Optional Equipment. Throughout this publication, wherever a feature is described as being an 'Option' or 'Optional Fitment/Pack' etc, you should assume that it will be at extra cost to the base vehicle, unless specifically stated to the contrary.

Designed and produced by Allan Burrows Limited,
Ingatestone, Essex.

Printed by CK Printing Ltd.

**Published by Ford Motor Company Limited,
Brentwood, Essex, England.**

Registered in England No 235446

FA 1336

October 1998.

© Ford Motor Company Limited.

www.ford.co.uk



BY APPOINTMENT TO
HER MAJESTY THE QUEEN
MOTOR VEHICLE MANUFACTURERS
FORD MOTOR COMPANY LIMITED
BRENTWOOD ESSEX



BY APPOINTMENT TO
H.M. QUEEN ELIZABETH THE QUEEN MOTHER
MOTOR VEHICLE MANUFACTURERS
FORD MOTOR COMPANY LIMITED
BRENTWOOD ESSEX



BY APPOINTMENT TO
H.R.H. THE PRINCE OF WALES
MOTOR VEHICLE MANUFACTURERS
FORD MOTOR COMPANY LIMITED
BRENTWOOD ESSEX

