

B30

Ford**Focus** Flight

Special edition

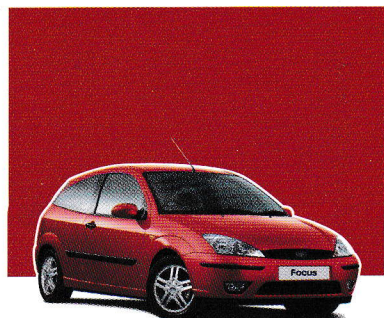




Collect Nectar points at participating Ford Dealers now. So keep a look out for the latest Ford offers at www.ford.co.uk/nectar or call the Ford Information Service on 0845 7111 888.*



Body and trim colours



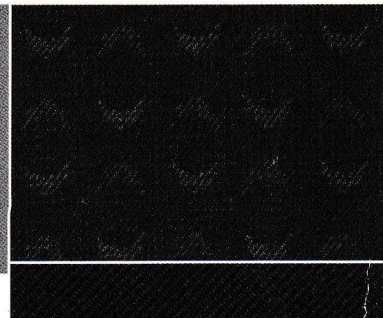
Colorado Red
Solid body colour



Tonic**
Metallic body colour



Machine Silver**
Metallic body colour



Salomon seat trim in
Midnight Black

Note The car images used are to illustrate body colours only. Flight specification below.

FordFocus Flight

Standard features include

- 3- and 5-door bodystyles
- 15" multi-spoke wheelcover design
- Body colour door mirror housings
- Power-operated front windows
- Remote control central/double locking
- 1.6-litre 16V petrol engine
- ICE 6000N RDS stereo radio/CD with column-mounted controls
- Air conditioning
- Titanium-effect grey facia
- Advanced Restraint System (ARS)
- Centre rear head restraint
- Driver's and front passenger's airbags♦
- Side airbags
- Anti-lock brakes
- Side-impact door beams, front and rear
- Safeguard Passive Anti-Theft System (PATs)

Optional features available

- Metallic paint
- 15" 8x2-spoke alloy wheels
- 'Quickclear' heated windscreen and heated washer jets
- Power-operated and heated door mirrors
- Park Assist
- Power-operated sunroof
- Electronic Automatic Temperature Control (EATC)
- Electronic Stability Programme (ESP)
- Perimeter alarm (3-door)
- Volume-sensing and perimeter alarm (5-door)
- Fixed or detachable tow bars
- Smokers' Pack
- Interior Versatility Pack

***Note:** A child seat should never be placed in the front passenger seat when the Ford vehicle is equipped with an operational front passenger's airbag. The safest place for children is properly restrained on the rear seat.

Illustrations, descriptions and specifications. This publication was correct at the time of going to print. However, Ford policy is one of continuous product development. The right is reserved to change specifications, colours and prices of the models and items illustrated and described in this publication at any time. For the latest details always consult your Ford Dealer. **Optional equipment.** Throughout this publication, wherever a feature is described as being an 'Option' or 'Optional Fitment/Pack', etc., you should assume that it will be at extra cost to the base vehicle, unless specifically stated to the contrary. All models and colour combinations are subject to availability. ***Ford Information Service.** Calls are charged at national rate and may be recorded for training purposes. **Metallic body colours are extra cost options.

Published by Ford Motor Company Limited,
Brentwood, Essex, England.
Registered in England No. 235446.
FA 1471.
BJN 19227.
January 2004.
© Ford Motor Company Limited.

www.ford.co.uk

Designed for living. Engineered to last

