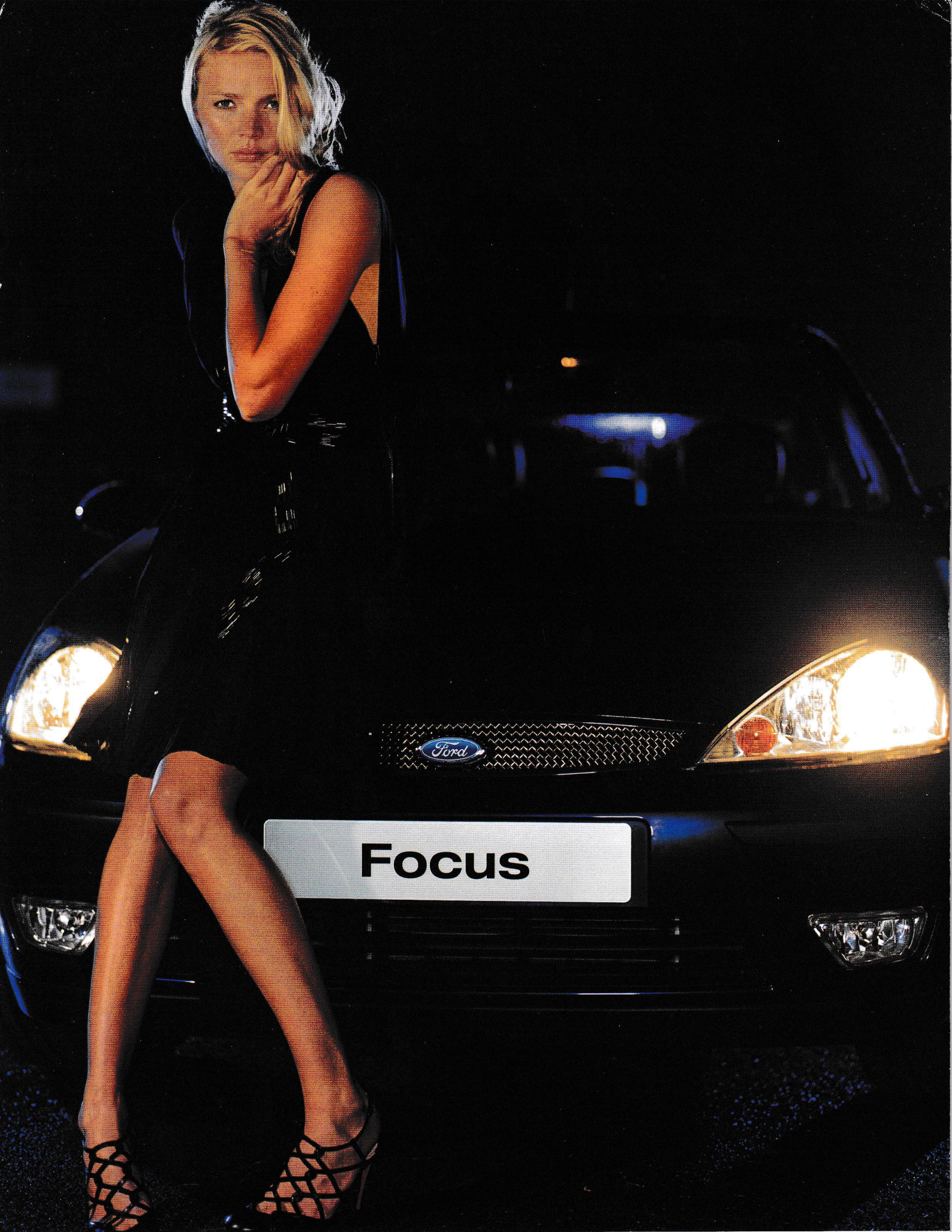


B27

breakthrough
breast cancer

Ford**Focus** Ink





Focus

Pretty in Ink

Express yourself in Ink

For style, sophistication and a distinct personality, soak up the new special edition Ford**Focus** Ink



A body to die for

Sultry blue curves, chrome grille and tailpipe and 15-inch alloys mean you're bound to turn heads. And with full leather interior, air conditioning and remote control CD player you can feel just as good on the inside as you look on the outside

Designed to be driven

Not only is the Ford Focus Ink easy on the eye, it's also easy on the road.

With its generous power and responsive handling, you'll find yourself exactly where you want to be – in control. And with a splash of luxury and the latest in safety features, style and confidence comes as standard.

Because life's better when you take control.

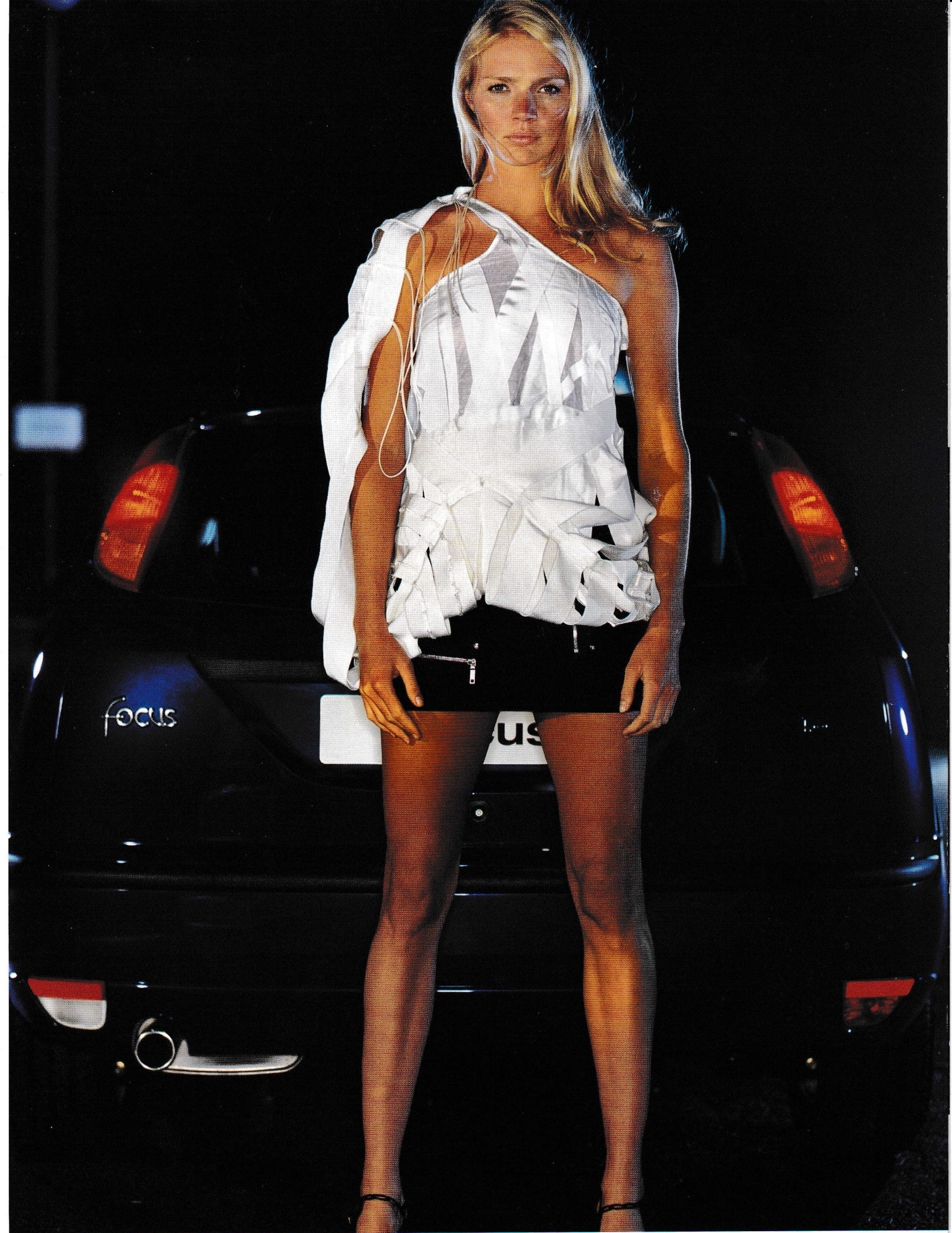
Key features

- 3 and 5-door bodystyles
- 1.6-litre Zetec 16V petrol engine
- Ink Blue metallic paint
- Midnight Black leather trim
- Driver's and front passenger's heated seats
- Stereo radio/single slot CD player with remote control
- Air conditioning
- 15" 3x2-spoke alloy wheels
- Chrome exhaust tailpipe
- Electrically-operated and heated door mirrors
- 'Quickclear' heated windscreen and heated washer jets
- Titanium-effect scuff plates
- Remote control central/double locking
- Anti-lock brakes (ABS)

Optional features available

- Side impact airbags
- Chrome radiator grille (no cost option)
- Park Assist parking distance sensor
- Nokia hands-free mobile phone kit





Bold and daring



Collect Nectar points at participating Ford Dealers now. So keep a look out for the latest Ford offers at www.ford.co.uk/nectar or call the Ford Information Service on 0845 7111 888.*



Dealer

Published by Ford Motor Company Limited,
Brentwood, Essex, England.
Registered in England No. 235446.

FA 1462.
BJN 18723.
July 2003.
© Ford Motor Company Limited.

www.ford.co.uk

The Government fuel figures do not express or imply any guarantee of the fuel consumption of any particular car. The cars themselves have not been tested and there are inevitably differences between individual cars of the same model. In addition, a car may incorporate particular modifications. Furthermore, the driver's style and road and traffic conditions, as well as the extent to which the car has been driven and the standard of maintenance, will affect its fuel consumption. **Insurance groups** are only as recommended by the Association of British Insurers. You should always consult your insurance adviser for confirmation. **Illustrations, descriptions and specifications.** This catalogue was correct at the time of going to print. However, Ford policy is one of continuous product development. The right is reserved to change specifications, colours and prices of the models and items illustrated and described in this publication at any time. For the latest details always consult your Ford Dealer. **Optional equipment.** Throughout this publication, wherever a feature is described as being an 'Option' or 'Optional Fitment/Pack', etc., you should assume that it will be at extra cost to the base vehicle, unless specifically stated to the contrary. All models and colour combinations are subject to availability. *Calls are charged at national rate and may be recorded for training purposes.

Designed for living. Engineered to last

