

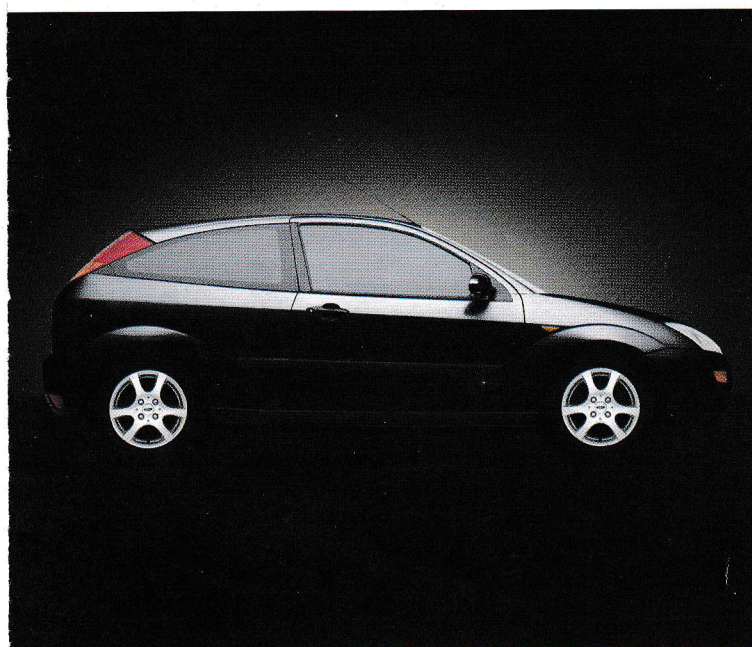
P6

07/2001

## ford**focus**

retail prices 6th july 2001

featuring the CL, zetec, zetec esp, LX and ghia



# fordfocus prices

	Doors	Engine	CO <sub>2</sub> Band	Price £	VAT £	Total Retail £	Estimated 'On the Road' Retail £
<b>CL</b>	3	1.4i 16V	B2	8757.45	1532.55	<b>10290.00</b>	<b>10460.00</b>
<b>Zetec</b>	3	1.4i 16V	B2	9182.98	1607.02	<b>10790.00</b>	<b>10960.00</b>
<b>CL</b>	5	1.4i 16V	B2	9182.98	1607.02	<b>10790.00</b>	<b>10960.00</b>
<b>Zetec</b>	3	1.6i 16V	B2	9608.51	1681.49	<b>11290.00</b>	<b>11460.00</b>
<b>Zetec</b>	5	1.6i 16V	B2	10034.04	1755.96	<b>11790.00</b>	<b>11960.00</b>
<b>Zetec</b>	3	1.8i 16V	C2	10034.04	1755.96	<b>11790.00</b>	<b>11980.00</b>
<b>CL</b>	E	1.6i 16V	B2	10246.81	1793.19	<b>12040.00</b>	<b>12210.00</b>
<b>LX</b>	4	1.6i 16V	B2	10459.57	1830.43	<b>12290.00</b>	<b>12460.00</b>
<b>LX</b>	5	1.6i 16V	B2	10459.57	1830.43	<b>12290.00</b>	<b>12460.00</b>
<b>Zetec</b>	5	1.8i 16V	C2	10459.57	1830.43	<b>12290.00</b>	<b>12480.00</b>
<b>Zetec</b>	3	1.6i 16V auto	D2	10459.57	1830.43	<b>12290.00</b>	<b>12495.00</b>
<b>Zetec</b>	3	1.8 TDdi	A3	10544.68	1845.32	<b>12390.00</b>	<b>12550.00</b>
<b>CL</b>	5	1.8 TDdi	A3	10544.68	1845.32	<b>12390.00</b>	<b>12550.00</b>
<b>Zetec</b>	E	1.6i 16V	B2	10672.34	1867.66	<b>12540.00</b>	<b>12710.00</b>
<b>Ghia</b>	4	1.6i 16V	B2	10885.11	1904.89	<b>12790.00</b>	<b>12960.00</b>
<b>Ghia</b>	5	1.6i 16V	B2	10885.11	1904.89	<b>12790.00</b>	<b>12960.00</b>
<b>LX</b>	4	1.8i 16V	C2	10885.11	1904.89	<b>12790.00</b>	<b>12980.00</b>
<b>LX</b>	5	1.8i 16V	C2	10885.11	1904.89	<b>12790.00</b>	<b>12980.00</b>
<b>Zetec</b>	5	1.6i 16V auto	D2	10885.11	1904.89	<b>12790.00</b>	<b>12995.00</b>
<b>Zetec</b>	5	1.8 TDdi	A3	10970.21	1919.79	<b>12890.00</b>	<b>13050.00</b>
<b>LX</b>	E	1.6i 16V	B2	11097.87	1942.13	<b>13040.00</b>	<b>13210.00</b>
<b>Zetec</b>	E	1.8i 16V	C2	11097.87	1942.13	<b>13040.00</b>	<b>13230.00</b>
<b>CL</b>	E	1.8 TDdi	A3	11182.98	1957.02	<b>13140.00</b>	<b>13300.00</b>
<b>Ghia</b>	4	1.8i 16V	C2	11310.64	1979.36	<b>13290.00</b>	<b>13480.00</b>
<b>Ghia</b>	5	1.8i 16V	C2	11310.64	1979.36	<b>13290.00</b>	<b>13480.00</b>
<b>LX</b>	4	1.6i 16V auto	D2	11310.64	1979.36	<b>13290.00</b>	<b>13495.00</b>
<b>LX</b>	5	1.6i 16V auto	D2	11310.64	1979.36	<b>13290.00</b>	<b>13495.00</b>
<b>LX</b>	4	1.8 TDdi	A3	11395.74	1994.26	<b>13390.00</b>	<b>13550.00</b>
<b>LX</b>	5	1.8 TDdi	A3	11395.74	1994.26	<b>13390.00</b>	<b>13550.00</b>
<b>LX</b>	E	1.8i 16V	C2	11523.40	2016.60	<b>13540.00</b>	<b>13730.00</b>
<b>Zetec</b>	E	1.6i 16V auto	D2	11523.40	2016.60	<b>13540.00</b>	<b>13745.00</b>
<b>Zetec</b>	E	1.8 TDdi	A3	11608.51	2031.49	<b>13640.00</b>	<b>13800.00</b>
<b>Zetec ESP</b>	3	2.0i 16V	D2	11736.17	2053.83	<b>13790.00</b>	<b>13995.00</b>
<b>Ghia</b>	4	1.6i 16V auto	D2	11736.17	2053.83	<b>13790.00</b>	<b>13995.00</b>
<b>Ghia</b>	5	1.6i 16V auto	D2	11736.17	2053.83	<b>13790.00</b>	<b>13995.00</b>
<b>Ghia</b>	4	1.8 TDdi	A3	11821.28	2068.72	<b>13890.00</b>	<b>14050.00</b>
<b>Ghia</b>	5	1.8 TDdi	A3	11821.28	2068.72	<b>13890.00</b>	<b>14050.00</b>
<b>Ghia</b>	E	1.8i 16V	C2	11948.94	2091.06	<b>14040.00</b>	<b>14230.00</b>
<b>LX</b>	E	1.6i 16V auto	D2	11948.94	2091.06	<b>14040.00</b>	<b>14245.00</b>
<b>LX</b>	E	1.8 TDdi	A3	12034.04	2105.96	<b>14140.00</b>	<b>14300.00</b>
<b>Ghia</b>	4	2.0i 16V	D2	12161.70	2128.30	<b>14290.00</b>	<b>14495.00</b>
<b>Zetec ESP</b>	5	2.0i 16V	D2	12161.70	2128.30	<b>14290.00</b>	<b>14495.00</b>
<b>Ghia</b>	5	2.0i 16V	D2	12161.70	2128.30	<b>14290.00</b>	<b>14495.00</b>
<b>Ghia</b>	E	1.6i 16V auto	D2	12374.47	2165.53	<b>14540.00</b>	<b>14745.00</b>
<b>Ghia</b>	E	1.8 TDdi	A3	12459.57	2180.43	<b>14640.00</b>	<b>14800.00</b>
<b>Zetec ESP</b>	E	2.0i 16V	D2	12800.00	2240.00	<b>15040.00</b>	<b>15245.00</b>
<b>Ghia</b>	E	2.0i 16V	D2	12800.00	2240.00	<b>15040.00</b>	<b>15245.00</b>

All vehicles are 5-speed manual unless auto stated. All petrol engines are equipped with a catalytic converter.

# fordfocus option pack availability

## Option Availability

	CL	Zetec	Zetec ESP	LX	Ghia	Ghia 2.0i	Price £	VAT £	Total £
<b>Option Packs (at extra cost)</b>									
Climate Pack – CFC-free air conditioning, 'Quickclear' heated windscreen with heated washer jets and electrically-operated and heated door mirrors with body colour housings	0	0	S	–	S	S	425.53	74.47	<b>500.00</b>
Climate Pack – Manual tilt/slide sunroof, 'Quickclear' heated windscreen with heated washer jets and electrically-operated and heated door mirrors with body colour housings	–	–	–	0	–	–	425.53	74.47	<b>500.00</b>
Reflex Pack – Anti-lock brakes (with rear discs in lieu of drums on 1.8i), traction control and front side impact airbags♦	0	0	–	0	0	–	425.53	74.47	<b>500.00</b>
Zetec Styling Pack – Metallic paint and perforated leather seat facings	–	0	0	–	–	–	851.06	148.94	<b>1000.00</b>
Ghia Styling Pack – Metallic paint and 6x15 alloy wheels (steel 'space saver' spare*) with 195/55 R15H (195/60 R15V on diesel) tyres	–	–	–	–	0	–	425.53	74.47	<b>500.00</b>
Luxury Pack – Leather trim and power rear windows with global close feature	–	–	–	–	0	–	851.06	148.94	<b>1000.00</b>
Luxury Pack – Leather trim and cruise control	–	–	–	–	–	0	851.06	148.94	<b>1000.00</b>
<b>Optional Equipment (at extra cost)</b>									
Airbag – Front side impact airbags♦	–	–	0	–	–	0	127.66	22.34	<b>150.00</b>
Airbag – Delete passenger's airbag	0	0	0	0	0	0	N/C	N/C	<b>N/C</b>
Alarm – Interior scan and perimeter (not available on 3-door)	–	0	0	0	0	0	212.77	37.23	<b>250.00</b>
Alarm – Perimeter (3-door only)	–	0	0	–	–	–	127.66	22.34	<b>150.00</b>
Front fog lights and rear centre head restraint (not available on 3-door CL)	0	S	S	0	S	S	127.66	22.34	<b>150.00</b>
Spare wheel – 'Space saver' in lieu of full size spare	0	S	S	0	0	S	N/C	N/C	<b>N/C</b>
Sunroof – Manual (not available on 3-door CL)	0	0	0	0	0	0	212.77	37.23	<b>250.00</b>
Heavy-duty suspension	0	–	–	0	–	–	63.83	11.17	<b>75.00</b>
<b>Audio</b>									
CD upgrade – 6006N radio/in-dash CD autochanger in lieu of 4000	0	0	S	–	–	–	212.77	37.23	<b>250.00</b>
CD upgrade – 6006N radio/in-dash CD autochanger in lieu of 5000	–	–	–	0	0	S	127.66	22.34	<b>150.00</b>
CD upgrade – Separate CD autochanger	–	–	–	0	0	–	212.77	37.23	<b>250.00</b>
<b>Body Colour</b>									
Metallic paint	0	0	0	0	0	0	212.77	37.23	<b>250.00</b>

0 = Option at extra cost S = Standard N/C = No Charge option

### Dealer-fit Accessories\*

	Price £	VAT £	Total £
Protection Pack (carpet mats, front and rear mud flaps)	42.55	7.45	<b>50.00</b>
Baby seat (up to 10 kg)	51.06	8.94	<b>60.00</b>
Child safety seat (9 to 25 kg)	51.06	8.94	<b>60.00</b>
Booster cushion (15 to 36 kg)	15.32	2.68	<b>18.00</b>
Warning triangle	8.94	1.56	<b>10.50</b>
First Aid box	18.30	3.20	<b>21.50</b>
Securable crossbars	59.57	10.43	<b>70.00</b>
Dog guard – Half-height	51.06	8.94	<b>60.00</b>
Dog guard – Full-height with divider	140.43	24.57	<b>165.00</b>

\*Please consult your Ford Dealer to confirm the fitted price.

The Estimated 'On the Road' retail prices include the following:

CO <sub>2</sub> Emissions Band (see separate table for details)	Number Plates (Est) £	Vehicle First Registration Fee £	Vehicle Excise Duty £	Total £
<b>A3</b>	<b>25.00</b>	<b>25.00</b>	<b>110.00</b>	<b>160.00</b>
<b>B2</b>	<b>25.00</b>	<b>25.00</b>	<b>120.00</b>	<b>170.00</b>
<b>C2</b>	<b>25.00</b>	<b>25.00</b>	<b>140.00</b>	<b>190.00</b>
<b>D2</b>	<b>25.00</b>	<b>25.00</b>	<b>155.00</b>	<b>205.00</b>

The delivery charge is included in the total retail price, and is made on all Ford Focus models for delivery to Dealer's premises (with the exception of the Channel Islands and the Isle of Wight where a further charge will be made). Where delivery is not made to the customer at the Dealer's premises a further charge may be made by the Dealer.

### ♦ Note

A rear-facing child seat should never be placed in the front passenger seat when the Ford vehicle is equipped with a front passenger's or side airbags.

†NOTE: If the spare wheel rim or tyre size differs from the other wheels fitted: **DO NOT** drive in excess of 50 mph (80 km/h). **DO** drive the least possible distance.

With effect from 1st March 2001, the Vehicle Excise Duty (VED) charged on new cars will be based on their engine's CO<sub>2</sub> emissions† (expressed in grammes per kilometre). The chart below shows the Bands and the VED which will be levied.

VED Band	CO <sub>2</sub> Emissions (g/km)†	Alternative Fuel £	Petrol £	Diesel £
		<b>1</b>	<b>2</b>	<b>3</b>
<b>A</b>	up to 150	90.00	100.00	110.00
<b>B</b>	151 to 165	110.00	120.00	130.00
<b>C</b>	166 to 185	130.00	140.00	150.00
<b>D</b>	over 185	150.00	155.00	160.00

†All CO<sub>2</sub> emissions figures in g/km are from officially approved tests under the Passenger Car Fuel Consumption Order 1983 and in accordance with EEC Directive 93/116/EC.

The CO<sub>2</sub> emissions and fuel consumption test figures shown in the chart do not express or imply any guarantee of the emissions or fuel consumption of a car of the class in question. All the figures are based on tests conducted on vehicles with standard wheels and tyres; optional or accessory wheels and tyres may have an effect on the emissions and fuel consumption of a vehicle.



## option packs



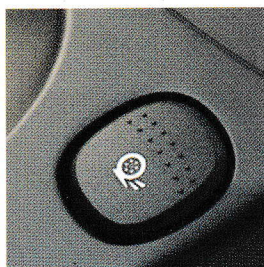
### styling pack £500

Available on Ghia  
(not 2.0i)

- 15" alloy wheels
- Metallic paint

### climate pack £500

- Air conditioning (CL, Zetec (not 2.0i))
  - Sunroof (LX only)
- 'Quickclear' heated windscreen with heated washer jets
- Electrically-operated and heated door mirrors



### reflex pack £500

Available on CL, Zetec  
(not ESP), LX and Ghia  
(not 2.0i)

- Electronic anti-lock brakes
  - Traction control
- Front side airbags\*

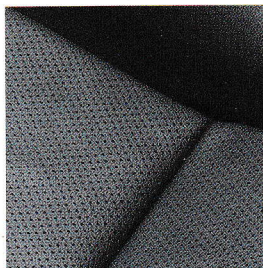
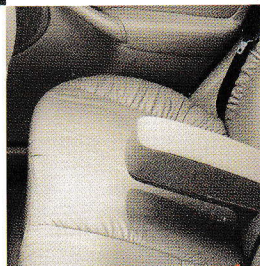
### luxury pack £1000

Ghia 1.6i/1.8/1.8 TDdi

- Leather trim
- Electrically-operated rear windows with global closing

Ghia 2.0i

- Leather trim
- Cruise control



### styling pack £1000

Available on Zetec and  
Zetec 2.0i ESP

- Perforated leather seat facings
- Metallic paint

#### **ford service connect**

Every new Ford car sold from October 2000 is protected by 12 months' unlimited mileage manufacturer's warranty, plus the option of extending this warranty with a no-cost 3-year/60,000 miles Ford Service Connect Plan. (For Escort and prior model Mondeo, the no-cost warranty extension applies to retail customers only.) Plan upgrades are also available, giving you the option of worry-free motoring for up to 5 years.

#### **customer order price protection plan**

Ford's Price Protection Plan means that the price you pay is the same as the price on your order, as long as you are prepared to accept delivery within three months, and in any event, as soon as your vehicle is available. Your Dealer has full details of the Plan. Ford Motor Company Limited is not liable for changes in price caused by Government changes in tax rates or changes in other applicable legislation.

#### **recommended price**

The Estimated 'On the Road' retail price consists of the recommended retail price of the vehicle (which includes delivery to Dealer), VAT, Government Vehicle Excise Duty, Government Vehicle First Registration Fee and estimated cost of number plates. Recommended retail prices are prices recommended by Ford to the Dealer including VAT.

#### **vat**

VAT shown in this Price Guide is calculated at 17.5%. The total price of a vehicle, including factory-fitted options and accessories fitted by the Ford Dealer, will be subject to VAT on retail sale.

#### **vehicle excise duty**

The Vehicle Excise Duty charge is applicable at the time of supply.

#### **export models**

For Export models, differences can exist in relation to prices and specifications. For further information about Export models and Export optional equipment, please contact Ford Motor Company Limited, Tax Free Sales, Wintersells Road, Byfleet, Surrey KT14 7LF. Tel: 01932 335113.

#### **price and specification changes**

The prices and specifications in this publication were true and accurate at the time of printing. You should, however, check details with your Dealer, as there may have been changes in view of the Ford policy of continuous development. The right is reserved to change specification, prices and colours.

Published by Marketing Communications,  
Ford Motor Company Limited, Brentwood, Essex.  
July 2001.

BJN 16619. Designed and produced by Burrows, Shenfield, Essex.

FA 1337

K170

