

ford**focus** zetec collection



ford**focus** zetec collection

cool blue style without compromise

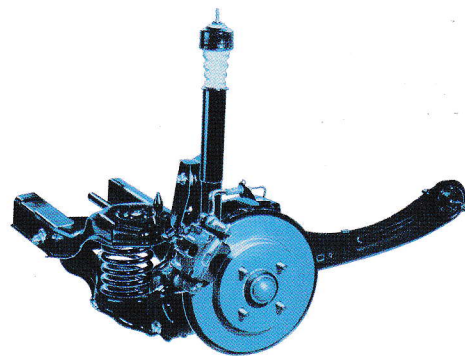
You don't compromise in any other area of your life, so why compromise on the car you drive? Choose one that gives you the confidence and control you demand, plus the space you need. A car that pushes the boundaries of what a car in its class can achieve, by blending relentless attention to detail with innovative design. The Ford Focus Zetec Collection is that car. Available in four bold colours and two bodystyles, it's a car that invites you to get into the driver's seat and express yourself.

Once in that seat, a feeling of confidence surges through you. You feel ready for anything. Everything is smooth, stable, precise. With outstanding road-holding, you know you're in control. You know that the refined engine, fully independent Control Blade rear suspension and low-friction steering are working together to deliver a unique driving experience.

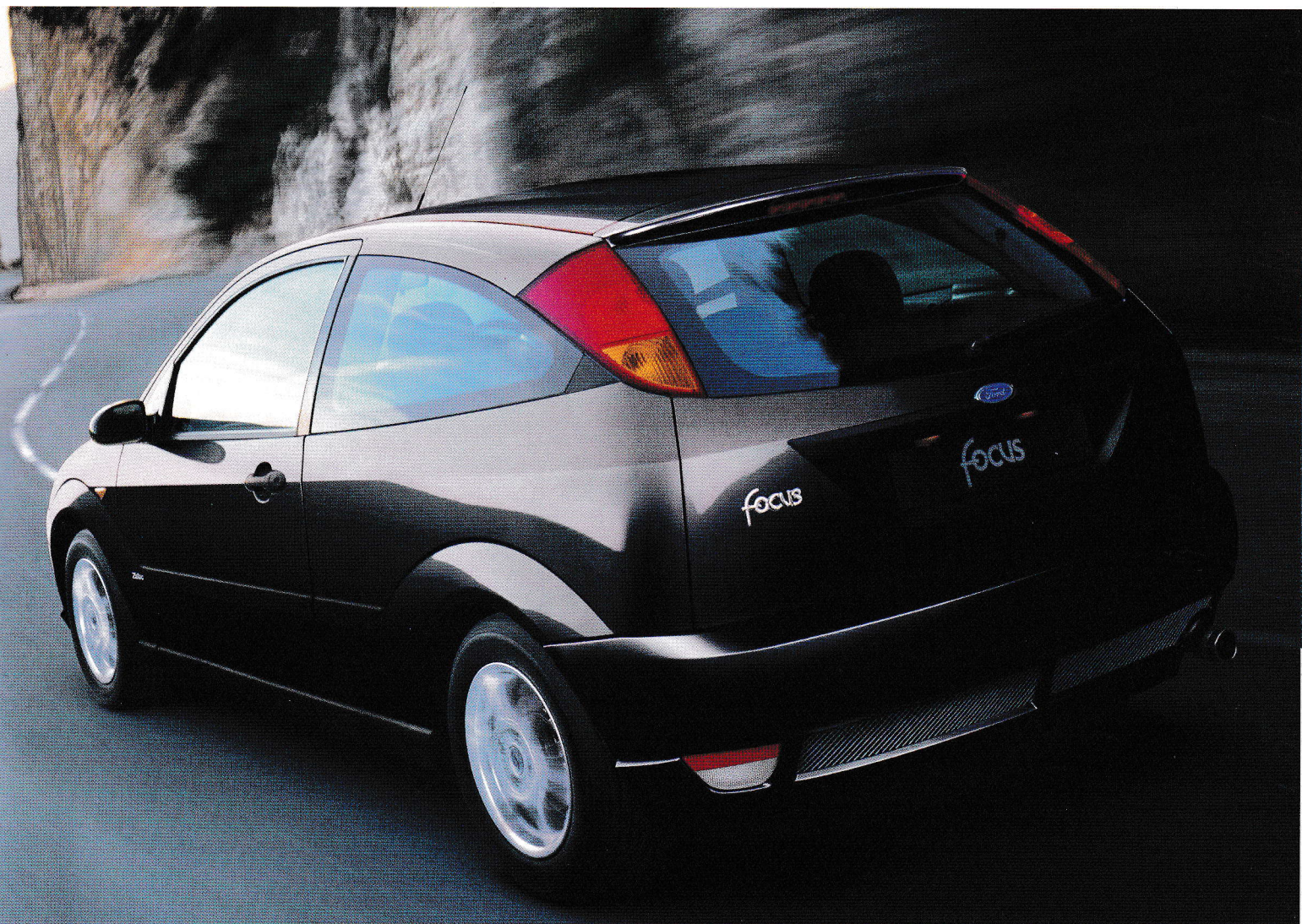


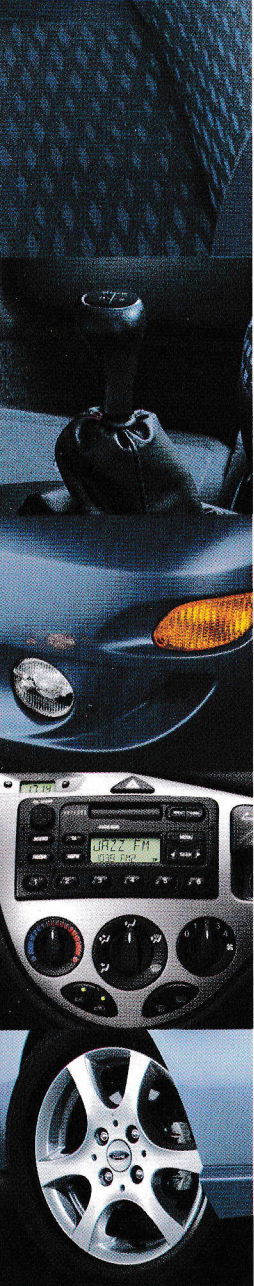
You'll also be impressed with Ford Focus Zetec Collection's innovative use of space and colour. In fact, it gives you more head, leg and foot room than any other car in its class. It also gives you better ergonomics and more style. Front seats have unique blue Amandine seat facings; the steering wheel and gear knob are both leather-covered and there are unique mats with a blue Focus logo.

Ingenious Control Blade independent rear suspension system makes extensive use of pressed-steel components to reduce unsprung weight, while offering enhanced levels of roadholding.



ford**focus** expect**more**





key features

You expect **more** style and individuality. The Ford Focus Zetec Collection delivers.

Key features include:

- 1.8i 16V Zetec Engine
 - Bodycoloured RS front bumper with integral front fog lamps
 - Bodycoloured RS rear bumper
 - Bodycoloured rear spoiler
 - Unique 3x2 spoke alloy wheels
 - Sports style front seats with unique blue Amandine seat facings
 - Leather covered steering wheel and gear knob
 - Unique floor mats with blue
- Focus logo

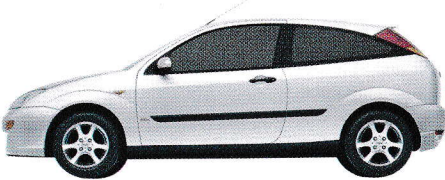
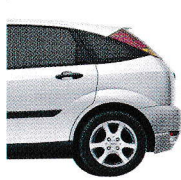
Optional Equipment:

- Climate Pack (air-conditioning, quickclear heated front screen and power heated mirrors)
- Reflex Pack (anti-lock brakes with rear disc brakes, traction control and front side impact airbags*)
- CD upgrade – 6000N RDS EON with column-mounted remote controls in lieu of 4000.

Ford Focus Zetec Collection is based on the Ford Focus Zetec. For full equipment and technical specification, please see the Ford Focus range brochure.

* **Note:** A rear-facing child seat should never be placed in the front passenger seat when the Ford vehicle is equipped with a front passenger's or side airbags.

available bodystyles and colours

			
ford focus zetec collection 3-door		5-door	
available engines		1.8i	1.8i

Illustrations, descriptions and specifications.

This catalogue was correct at the time of going to print.

However, Ford policy is one of continuous product development. The right is reserved to change specifications, colours and prices of the models and items illustrated and described in this publication at any time.

For the latest details always consult your Ford Dealer.

Optional Equipment.

Throughout this publication, wherever a feature is described as being an 'Option' or 'Optional Fitment/Pack' etc, you should assume that it will be at extra cost to the base vehicle, unless specifically stated to the contrary.

All models and colour combinations are subject to availability.

BJN 14686. Designed and produced by Burrows WCJ, Shenfield, Essex.

Produced by Werbeagentur Zetweka. PN 072503/0002/49.5m/GB

Printed by Heining + Müller, D-45478 Mülheim (Ruhr).

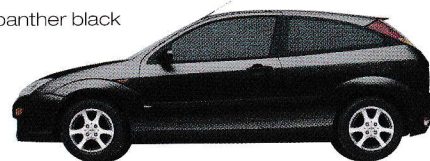
Published by
Ford Motor Company
Limited, Brentwood,
Essex, England.
Registered in
England No 235446.
FA 1373/1

February 2000.

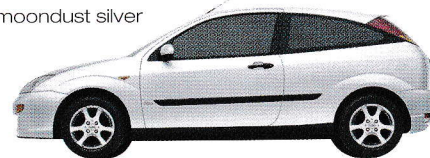
© **Ford Motor**
Company Limited.

www.ford.co.uk

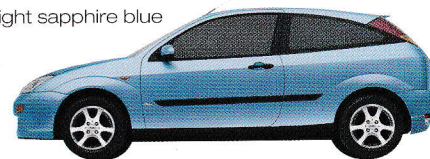
panther black



moondust silver



light sapphire blue



diamond white

