

B2.5

ONE30®







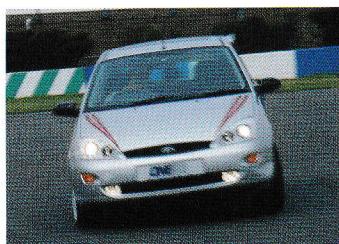
130 **NE30**®



Increased performance and improved vehicle aesthetics
provide an unforgettable driving experience.

**an unforgettable
driving experience**

A limited run of five hundred 130's will be available
from selected Ford main dealer outlets.



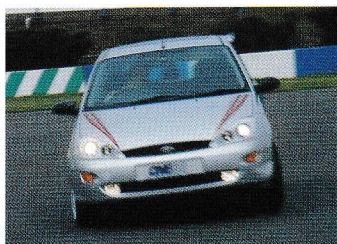
130 ONE30[®]



Increased performance and improved vehicle aesthetics
provide an unforgettable driving experience.

**an unforgettable
driving experience**

A limited run of five hundred 130's will be available
from selected Ford main dealer outlets.



Limited edition

The limited edition 130 combines the key elements of performance and style, making this more than just a marketing concept.

increased performance and handling

Increased engine performance allows the driver to explore the outer limits of the vehicle's highly acclaimed chassis in the most demanding of driving conditions. The handling characteristics are further enhanced with a revised wheel and tyre combination.

Driver feedback is complimented by the sports steering wheel and alloy gear knob, enabling the driver to manoeuvre the vehicle and execute precise gear changes at all times.

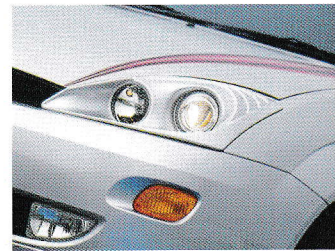
Rear Spoiler - Extra stability during high speed driving conditions. The design characteristics enhance the car's vehicle dynamics.



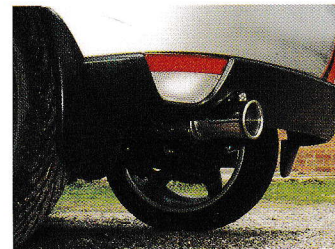
Decal Kit - This carefully designed colour scheme compliments the car's improved performance and style.



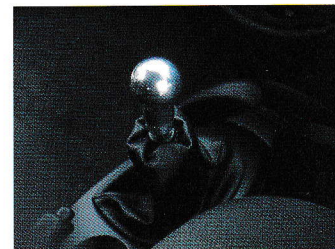
Twin Head Lamp Kit - Manufactured and designed by the world's leading headlamp experts, increasing luminosity essential for high-speed driving during the hours of darkness.



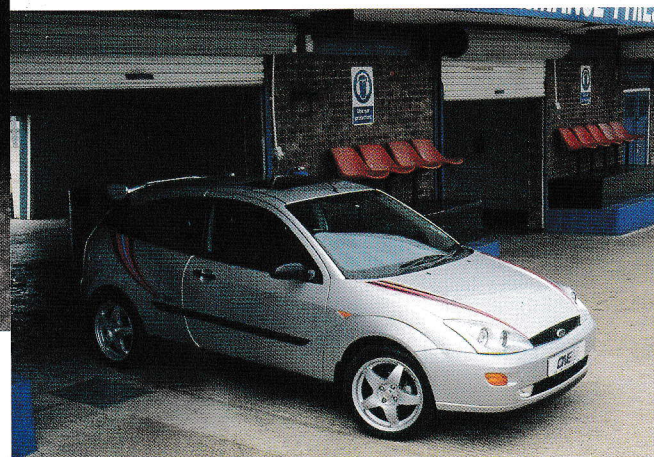
Rear Silencer - Stylish and purposeful, improving engine performance.



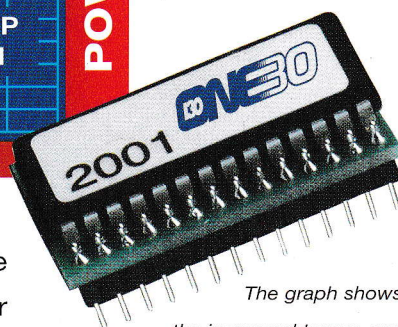
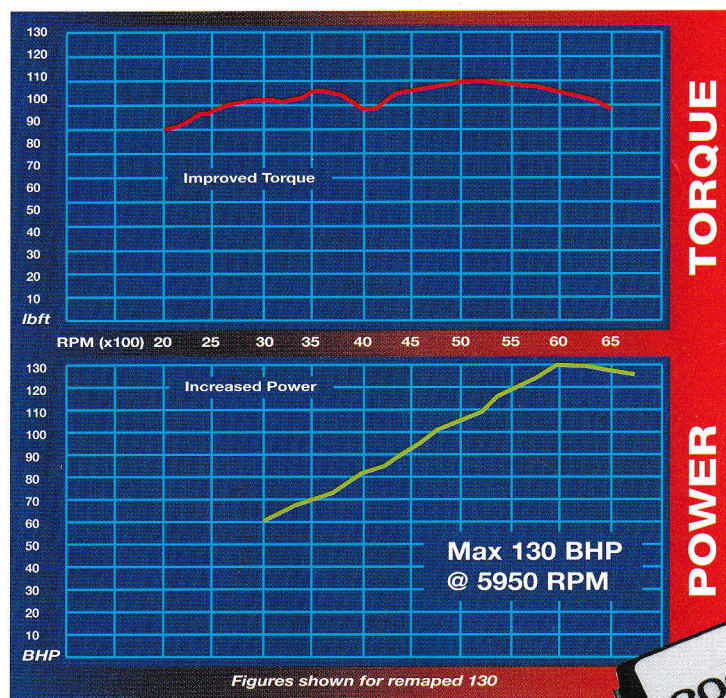
Gear Knob - An authentic racing gear knob that enhances gear shift control.



17" Alloy Road Wheel - Designed to satisfy the most demanding driving conditions. Tried and tested by top level rally teams across the world.



Increased Engineperformance



The graph shows the increased torque and power outputs on our demonstration vehicle utilising a re-mapped ECU. Power gains may vary.

The information held on the chip created by the manufacturer may have compromises that must allow for fuel economy, exhaust emission regulations, poor grades of fuel and for the car going months without proper servicing.

The memory of the 130 chip has been programmed with the objective of increasing torque and brake horse power. The ignition timing is re-mapped to create a new advance curve and the fuel map is modified to optimise power output on full power and to improve throttle response without affecting economy on part throttle. The end result is a lively and responsive vehicle, worthy of the Motor Sport image.

Your Ford Dealer



Designed & Published

July 1999

© DPRS