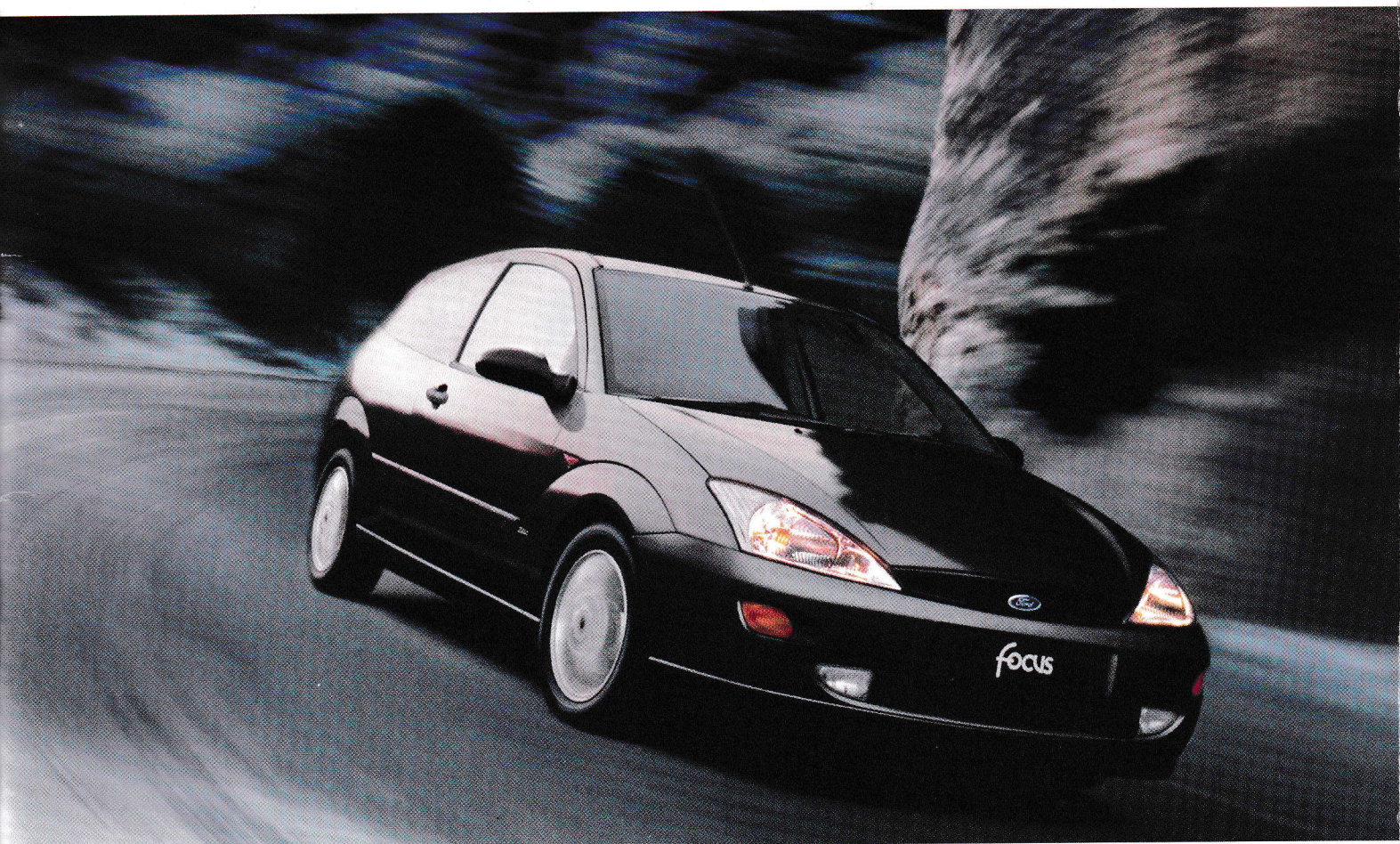


B6

03.2000

ford**focus**





Welcome to the 21st century, the era of the information superhighway. As the pace of life moves ever faster, consider a place where you are in complete control. An environment that intuitively works with you. That responds to your every command, seamlessly processing a myriad of signals into a smooth, precise manoeuvre. Consider a place of enjoyment, where everything fits perfectly, everything feels just right. A place where you feel confident, at ease. And ready to take on the challenges that lie ahead.





shouldn't you expect **more**  
from life?

dynamic performance 10

maximum control 12

choice 14

safety and security 16

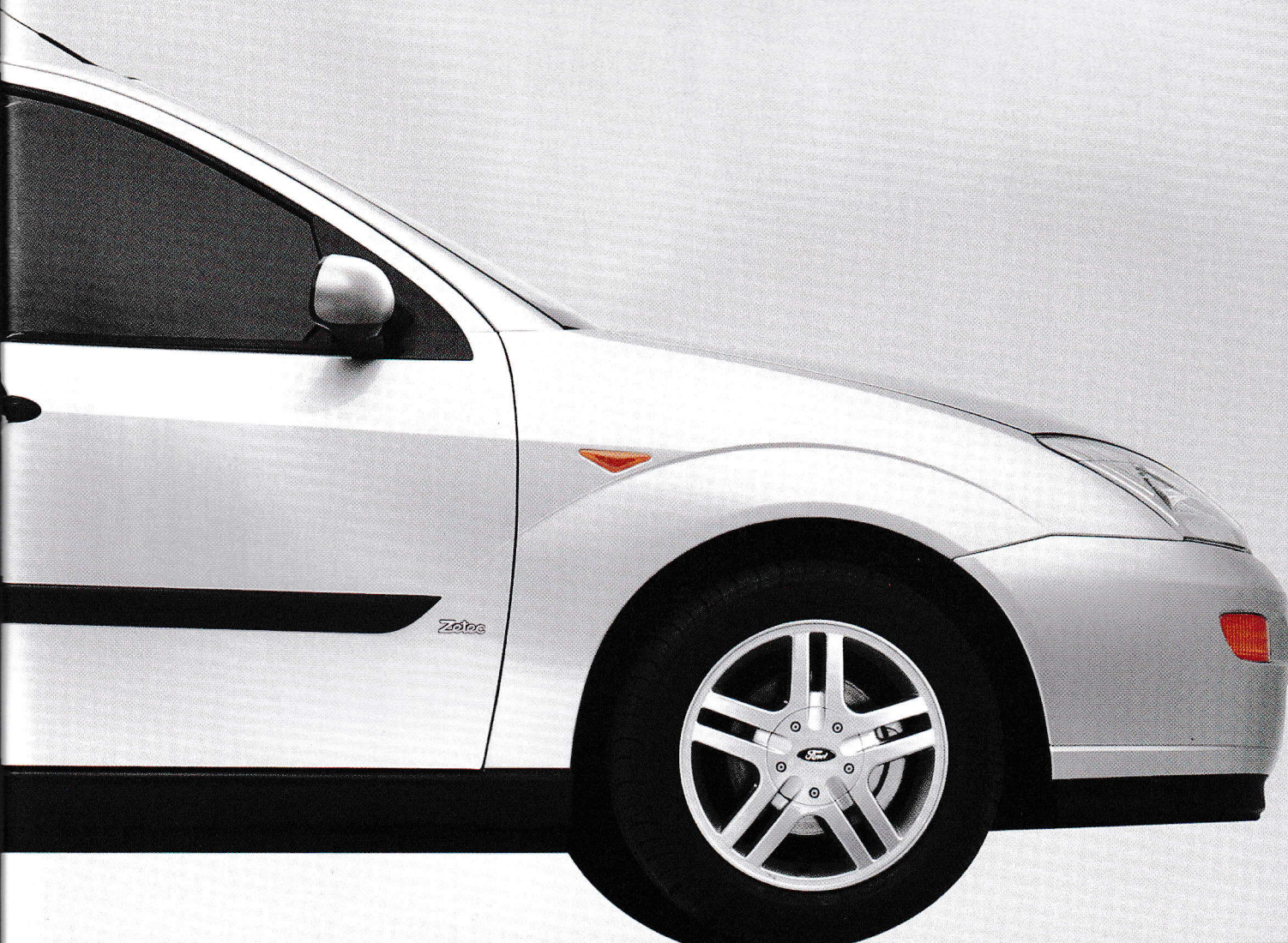
technical data 18

specifications and options 22

instant response 26

engines 28

expect more 35
















 **Grist**  
 **McRae**

*Telefonica*  
**MoviStar**

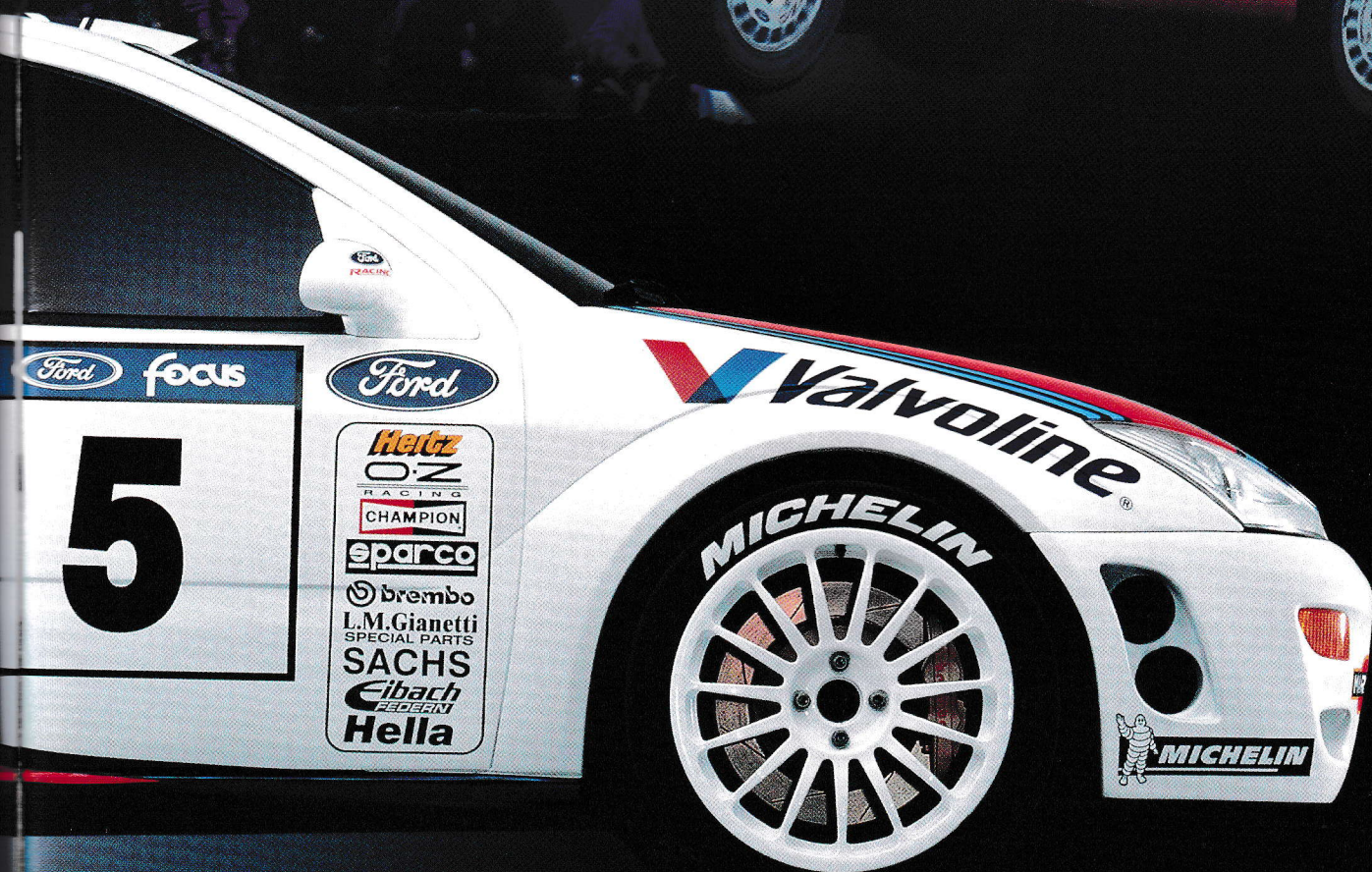
 [www.fordracing.net](http://www.fordracing.net)



**MICHELIN**



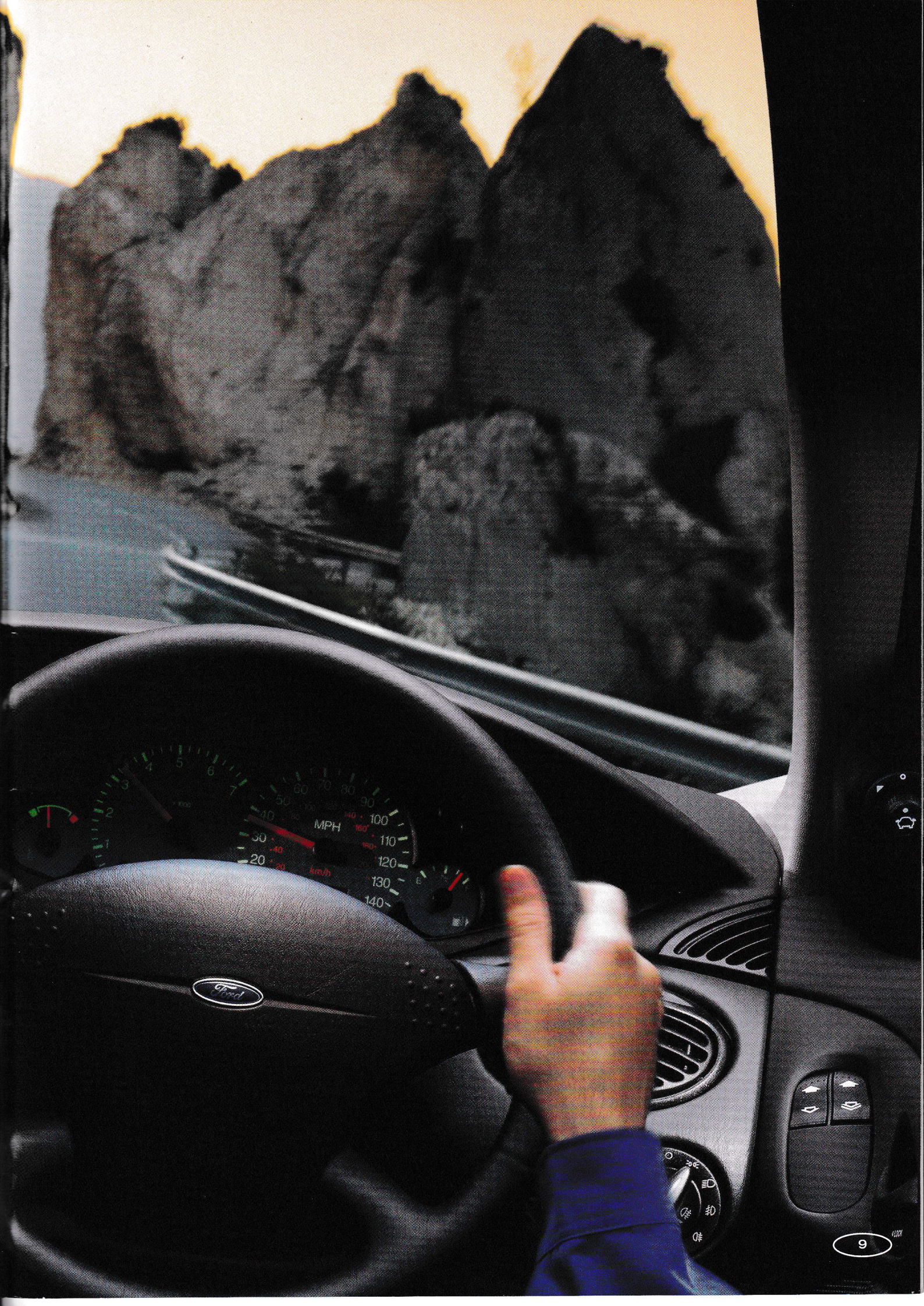




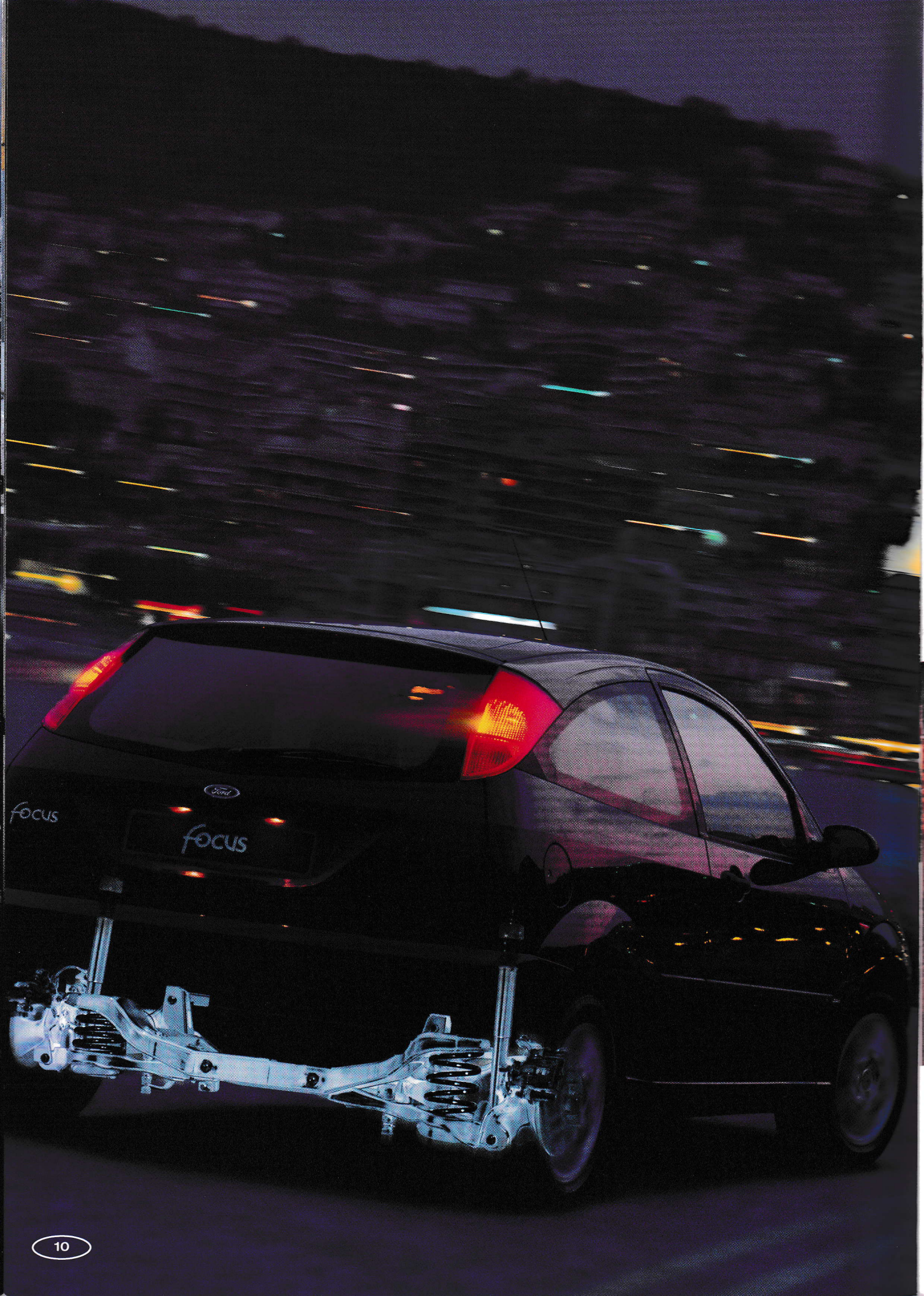














# driving quality

## dynamic performance

Ford Focus delivers an outstanding driving experience.

With excellent interior space and ergonomics, it's a pleasure to be in. Sitting behind the wheel, you'll appreciate the agility, stability, precision and comfort.

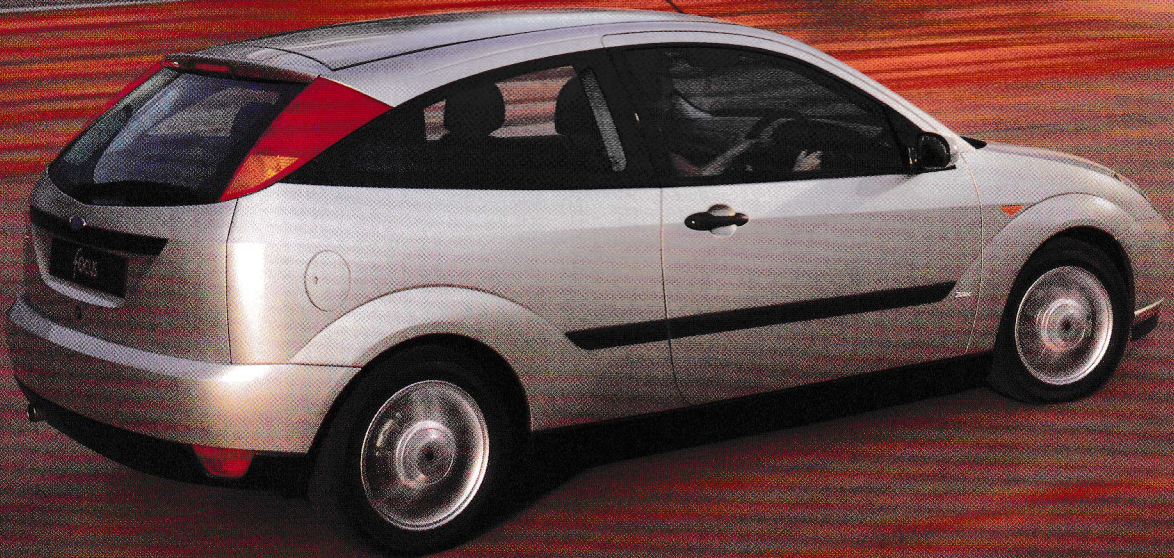
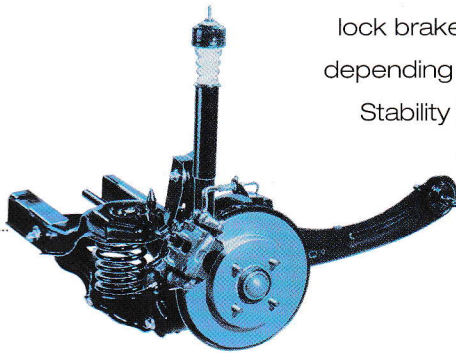
The suspension and chassis have been fine-tuned with relentless attention to detail. The lightweight, fully independent Control Blade rear suspension system absorbs bumps and reduces impact harshness for outstanding ride quality. Precise, low-friction steering adds to the feeling of confidence and control. Anti-

lock brakes, traction control – standard or optional depending on your choice of model, and Electronic

Stability Programme (ESP) – available exclusively on the Ford Focus 2.0i Zetec – enhance active driving control even further.

See page 12 for full details.

Ingenious Control Blade independent rear suspension makes extensive use of lightened components to reduce unsprung weight, while offering enhanced levels of roadholding. ....





the corner approaches. you brake. turn in. was that ice at the roadside? loose gravel? an adverse camber? too late to think about it now. but you are still **in control**. and on your way.



## maximum control

ESP. A new dimension in dynamic performance.

Ford Focus is engineered to deliver class-leading handling and inherent stability. But even the most skilled driver can be surprised by the unexpected. That's why we have developed Electronic Stability Programme or ESP – a revolution in control and driving enjoyment.

Available exclusively on the Ford Focus 2.0i Zetec, ESP is designed to maintain stability as the car reaches its dynamic limits. By constantly monitoring the driver's intention and the car's response, ESP helps you avoid tricky situations. Before you even know they have occurred.

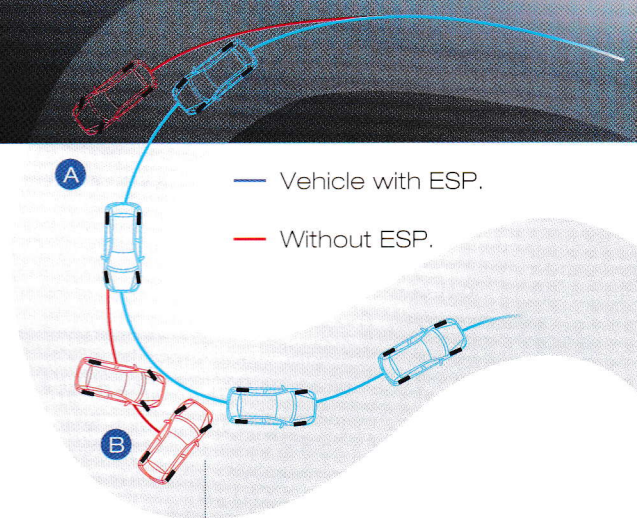
As an extension of the traction control (TCS) and anti-lock braking systems (ABS), ESP interacts between the driver and dynamic control systems to help restore stability if it senses that the front or rear wheels are about to slide.





By comparing steering wheel movement and road speed with the car's behaviour, the system knows instantly if the driver's intended course is being followed. As soon as any deviation is detected, ESP reduces engine power, then applies individual brakes momentarily to help bring the car back into line.

Even ESP, however, cannot defy the laws of physics, so always remember to drive responsibly and with care.



A system of sensors monitors steering wheel movements, road speed and even sideways travel of the car. When these forces threaten a skid or a spin, ESP makes corrections to individual wheels to help stabilise the car and optimise roadholding.

**A** Vehicle experiences understeer on approach.

**B** Vehicle experiences oversteer on exit to bend.



# choice

## interiors, bodystyles, features

Ford Focus sets new class standards through the intelligent and innovative use of space. State-of-the-art computer software enabled us to design a car which provides more head, leg and foot room for five adults than any comparable car.

A car built around you from the inside out, delivering the optimum combination of space, comfort and versatility.

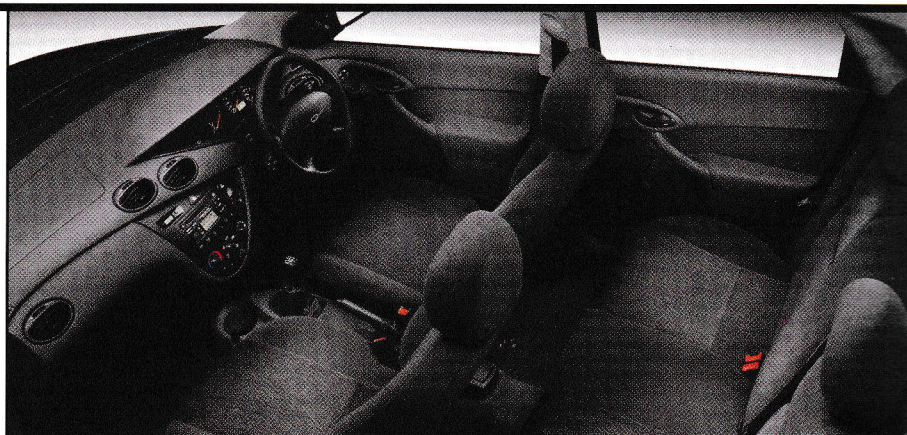
### Alternative Fuel Vehicles (AFVs)



Certain 1.8i Focus models are available with the option (at extra cost) to run on conventional unleaded petrol or LPG (liquefied petroleum gas). These models produce lower exhaust emissions than their petrol or diesel counterparts. A 48-litre LPG tank provides an average range of approximately 220 miles, in addition to the car's existing petrol tank. These factory-produced bi-fuel vehicles have full Ford warranty and nationwide support through the extensive Ford Dealer network.

#### **fordfocus CL**

With its combination of design and interior space, driving dynamics, ingenuity and affordability, CL is the essence of the Ford Focus range. Vehicle shown features optional equipment.



#### **The Ford Feature Model™ fordfocus Zetec**

Firm suspension and an array of styling cues give Zetec a unique sports personality.

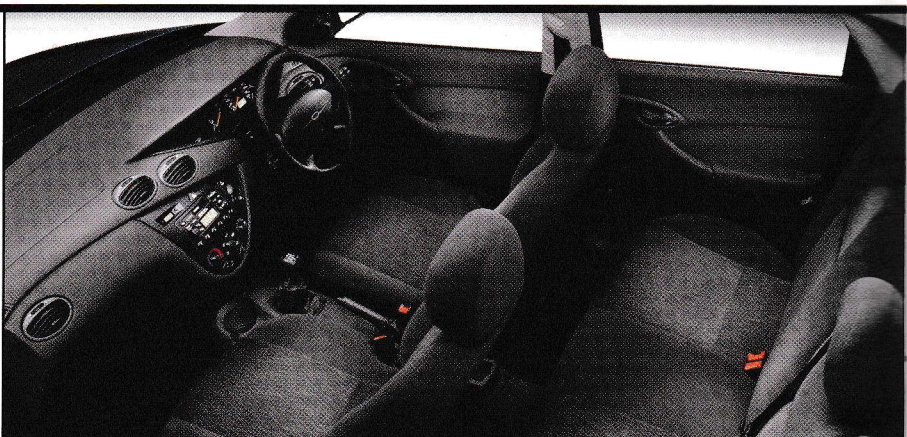
The Zetec 2.0i model adds the maximum control of ESP.

Vehicle shown features optional equipment.



#### **fordfocus LX**

LX combines the outstanding driving attributes of the range with extremely generous equipment levels.

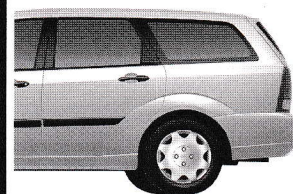
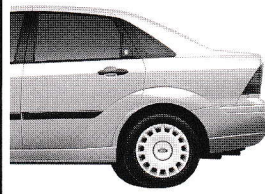
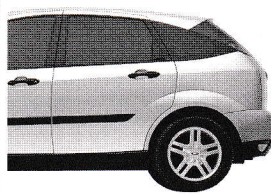
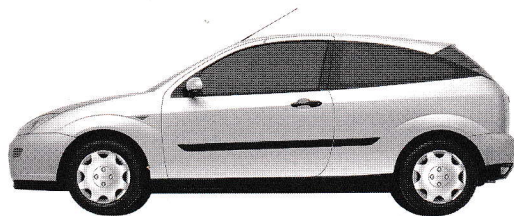


#### **fordfocus Ghia**

If you expect more luxury, take a closer look at Ghia. For features which add an extra dimension, specify the Ghia 2.0i model.







**fordfocus CL 3-door**

1.4i

**5-door**

1.4i, 1.8TDdi

**n/a**

**estate**

1.8TDdi

key **standard** features:

- Control Blade multi-link rear suspension
- Power-assisted steering
- Safeguard Passive Anti-Theft System (PATS) immobiliser
- Central locking
- Black side skirts (3 and 5-door)
- High mounted rear brake light
- Body-coloured door mirror housings
- Driver's and front passenger's airbags
- 60:40 split back rear seat
- Electrically-operated front windows
- Height adjustable front and rear head restraints
- Rake and reach adjustable steering column
- Anti-submarining front seats
- Model 4000N RDS stereo radio/cassette
- Driver's front seat manual height adjust

**fordfocus Zetec 3-door**

1.4i, 1.6i, 1.6i auto,  
1.8i and 2.0i ESP\*

**5-door**

1.6i, 1.6i auto, 1.8i,  
2.0i ESP\* and 1.8TDdi

**n/a**

**estate**

1.6i, 1.6i auto, 1.8i,  
2.0i ESP\* and 1.8TDdi

key **standard** features over CL:

- Front fog lights
- Remote control central, double locking
- 6x15 alloy wheels with a 'space saver' steel spare
- Black mesh radiator grille
- Sports suspension
- Three rear head restraints
- Grey instrument cluster controls with red pointers
- Metallic grey facia

- Sports-style front seats
- Leather-trimmed steering wheel

**fordfocus 2.0i ESP\***

has the following additional standard features:

- Electronic Stability Programme (ESP)
- Anti-lock brakes with traction control
- Rear disc brakes
- Model 6000N RDS stereo radio/CD
- Climate Pack (including CFC-free air conditioning)

**fordfocus LX n/a**

**5-door**

1.6i, 1.6i auto, 1.8i  
and 1.8TDdi

**n/a**

**estate**

1.6i, 1.6i auto, 1.8i  
and 1.8TDdi

key **standard** features over CL:

- Remote control central, double locking
- Remote tailgate release on key
- Model 5000N RDS radio/cassette
- Remote audio controls
- CFC-free air conditioning

**fordfocus Ghia n/a**

**5-door**

1.6i, 1.6i auto, 1.8i, 2.0i\*  
and 1.8TDdi

**4-door**

1.6i, 1.6i auto, 1.8i,  
2.0i\* and 1.8TDdi

**estate**

1.8i, 2.0i\* and 1.8TDdi

key **standard** features over LX:

- Electrically-operated and heated door mirrors
- Quickclear heated front windscreen
- Front fog lights
- Variable intermittent front wipers
- Woodgrain-effect facia
- Three rear head restraints
- Driver's front seat manual lumbar and power height adjustments
- Leather-trimmed gear knob and steering wheel

**fordfocus Ghia 2.0i\***

has the following additional standard features:

- Anti-lock brakes with traction control
- 6x15 alloy wheels with 195/60 tyres and 'space saver' steel spare
- Rear disc brakes
- Fuel computer
- CD autochanger
- Electrically-operated rear windows with global closing and 'bounce-back' sensor



## safety and security

From active safety features which provide the driver with the ability to avoid an accident in the first place, to innovations designed to minimise the effects of a collision, Ford Focus has a 'total car' approach to occupant protection.

### front seat belt retractors

Load-limiting retractors pay out the seat belt progressively above pre-determined loads, to help limit potential chest injury.

### front seat belt pre-tensioners

To provide additional protection, the pre-tensioners remove the slack from the webbing and pull you securely into the seat.

### side pushers

Located between the outer door and the interior trim, moulded foam pushers help to reduce potential injury by spreading crash energy over a wider area.

### side impact beams

Located within the door cavity, high-tensile boron steel-alloy beams help minimise side intrusion.

### high-security locks

These locks incorporate shrouded mechanisms and wiring which help to deter forced entry.

### double locking doors

This two-stage central/double locking system – operated by either of the front doors – is linked to the central locking and remote-control

facility. Once the double locks have been set, only the key or remote button can release the locks again.

### remote central locking

Remote central locking/unlocking operates within a 10-metre range.





#### **front airbags**

Driver and front passenger's airbags\* act in harmony with the vehicle structure to provide maximum protection within 50 milliseconds of an impact.

#### **side airbags**

Optional head and chest side airbags\* act as a barrier between the occupant and the side of the vehicle to cushion side impact forces.

#### **headrest design**

Adjustable head restraints feature energy absorbing foam, to provide optimum protection for occupants, regardless of height.

\*Note: A rear-facing child seat should never be placed in the front passenger seat when the Ford vehicle is equipped with a front passenger's or side airbags.

#### **safeguard engine immobiliser**

This passive anti-theft system is designed to prevent the engine from starting until its electronic control unit receives the correct coded signal from the ignition key.

#### **visible VIN**

Every Ford Focus has its own visible Vehicle Identification Number (VIN) at the bottom edge of the windscreen, making it very difficult for the vehicle's true identity to be changed or interfered with.

#### **key-operated bonnet release**

Makes unauthorised access to the engine compartment even more difficult.

#### **12-year anti-perforation warranty**

In addition to a fully galvanised body and 24-stage paint and body protection, Ford Focus has a 12-year anti-perforation warranty.





# technical data

## size and space

3 & 5-door 4-door Estate

### Exterior (mm)

A Overall length	4152	4362	4438
B Overall width without mirrors	1702	1702	1702
C Overall width with mirrors	1998	1998	1998
D Unladen height	1430	1430	1447
E Wheelbase	2615	2615	2615

### Interior (mm)

#### Front

F Headroom	995	997	997
G Maximum leg room	1095	1095	1095
H Maximum shoulder room	1358	1358	1358

#### Rear

I Headroom	982	978	1014
J Minimum leg room	882	882	911
K Maximum shoulder room	1358	1362	1358

### Estate Luggage Area

L Maximum cargo height	—	—	913
M Maximum width between wheel arches	—	—	1156
N Loadspace length to back of rear seats	—	—	1048*
O Loadspace length to back of front seats	—	—	1658*

### Stowable Luggage (cu m)<sup>†</sup>

P 5-seat mode	0.350 <sup>‡</sup>	0.490	0.520
Q 2-seat mode (laden to roof)	1.205	N/A	1.580

### Steering

Wall to wall 10.9 m

Lock to lock – 2.9 turns

### Fuel Tank

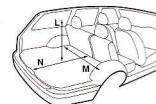
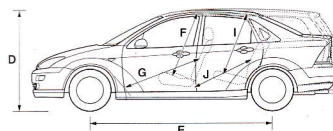
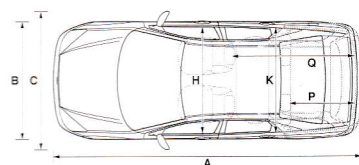
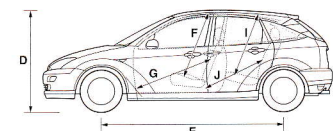
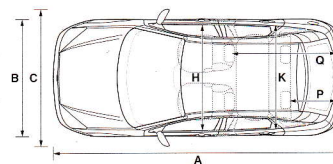
55 litres (useable capacity)

<sup>†</sup>Measured using the VDA Method.

Dimensions may vary dependent on the model and equipment fitted.

\*At floor level.

<sup>‡</sup>With 'space saver' spare wheel.



## model choice & weights and loads

Kerbweights (kg) <sup>††</sup>	CL	Zetec	LX	Ghia	Gross Vehicle Mass (GVM) (kg)	Max. towing limit at GVM (kg)
<b>3-door Focus</b>						
1.4i 16V Zetec	1059	1068			1570	940
1.6i 16V Zetec		1070			1570	1200
1.6i 16V Zetec auto*		1114			1595	1000
1.8i 16V Zetec		1125			1620	1200
2.0i 16V Zetec		1146			1640	1200
<b>4-door Focus</b>						
1.6i 16V Zetec				1091	1595	1200
1.6i 16V Zetec auto*				1137	1620	1000
1.8i 16V Zetec				1143	1650	1200
2.0i 16V Zetec				1160	1670	1200
1.8 TDdi				1205	1715	1200
<b>5-door Focus</b>						
1.4i 16V Zetec	1074				1585	940
1.6i 16V Zetec		1086	1077	1087	1590	1200
1.6i 16V Zetec auto*		1127	1126	1129	1615	1000
1.8i 16V Zetec		1140	1129	1139	1650	1200
2.0i 16V Zetec		1161		1156	1670	1200
1.8 TDdi	1194	1202	1194	1204	1710	1200
<b>5-door Estate</b>						
1.6i 16V Zetec		1128	1118		1635	1200
1.6i 16V Zetec auto*		1160	1159		1660	1000
1.8i 16V Zetec		1181	1169	1178	1695	1200
2.0i 16V Zetec		1204		1197	1715	1200
1.8 TDdi	1232	1242	1232	1240	1755	1200

## insurance groups

	CL	Zetec	LX	Ghia
1.4i 16V Zetec	4E	tbc		
1.6i 16V Zetec		5E	5E	6E
1.6i 16V Zetec auto		5E	5	6
1.8i 16V Zetec		6E	6E	7E
2.0i 16V Zetec		8E		8E
1.8 TDdi	5E	5E	5E	6E

E = Exceeds security requirement for model concerned and group rating has been reduced.

\*Optional transmission.

<sup>††</sup>Represents the lightest kerbweight assuming full fluid levels and 90% fuel levels, but without driver and subject to manufacturing tolerances and options, etc., fitted.

### Key:

This table shows the availability of engine combinations on Ford Focus models and their resulting kerbweights.

### Note:

All vehicles are 5-speed manual unless auto stated. All petrol engines are equipped with a catalytic converter.

**Towing limits** quoted represent the maximum towing ability of the vehicle at its Gross Vehicle Mass to restart on a 12 per cent gradient at sea level. The performance and economy of all models will be reduced when used for towing.

For further guidance, refer to the National Caravan Council's Towing Code.

**Roof rack load** is a maximum of 75 kg on all 3, 4 and 5-door models and 100 kg on estate models.

Innovative thinking led to the compact yet spacious design of the Ford Focus.

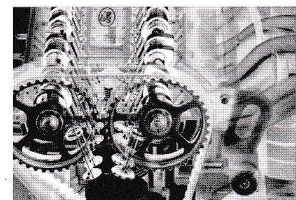
Specify the model which best suits your personal needs. But be assured, every Ford Focus shares the same engineering integrity.



## engine specifications

	Engine technical features	Maximum power*	Maximum torque*
<b>1.4i 16V Zetec</b> 1388 cc	Cylinders – 4 in-line ■ Electronic fuel injection with EEC V engine management system ■ Electronic breakerless ignition ■ Catalyst	55 kW (75 PS) at 5000 min <sup>-1</sup> (rpm)	123 Nm at 3500 min <sup>-1</sup> (rpm)
<b>1.6i 16V Zetec</b> 1596 cc	Cylinders – 4 in-line ■ Electronic fuel injection with EEC V engine management system ■ Electronic breakerless ignition ■ Catalyst	74 kW (100 PS) at 6000 min <sup>-1</sup> (rpm)	145 Nm at 4000 min <sup>-1</sup> (rpm)
<b>1.8i 16V Zetec</b> 1796 cc	Cylinders – 4 in-line ■ Electronic fuel injection with EEC V engine management system ■ Electronic breakerless ignition ■ Catalyst	85 kW (115 PS) at 5500 min <sup>-1</sup> (rpm)	160 Nm at 4400 min <sup>-1</sup> (rpm)
<b>2.0i 16V Zetec</b> 1988 cc	Cylinders – 4 in-line ■ Electronic fuel injection with EEC V engine management system ■ Electronic breakerless ignition ■ Catalyst	96 kW (130 PS) at 5500 min <sup>-1</sup> (rpm)	178 Nm at 4500 min <sup>-1</sup> (rpm)
<b>1.8 Direct Injection Turbo Diesel (intercooled)</b> 1753 cc	Cylinders – 4 in-line ■ Direct fuel injection with EEC V engine management system ■ Turbo intercooler ■ Oxidation catalyst ■ Exhaust Gas Recirculation	66 kW (90 PS) at 4000 min <sup>-1</sup> (rpm)	200 Nm at 2000 min <sup>-1</sup> (rpm)

\*Tested in accordance with ISO 1585



Whichever engine you specify, you'll appreciate smooth running and responsive power.

## performance and economy

Derivative(s)		CO <sub>2</sub> emissions (g/km)*	Performance (Ford test figs.)			Fuel consumption in L/100 km (mpg)†		
			Max. speed mph	0-62 mph (secs)	31-62 mph* (secs)	Urban	Extra urban	Combined
3-door Focus								
1.4i 16V Zetec	CL	153	106	14.4	17.0	8.5 (33.2)	5.2 (54.3)	6.4 (44.1)
1.4i 16V Zetec	Zetec	160	106	14.4	17.0	8.8 (32.1)	5.5 (51.4)	6.7 (42.1)
1.6i 16V Zetec	Zetec	169	115	10.9	15.2	9.4 (30.1)	5.7 (49.6)	7.1 (39.8)
1.6i 16V Zetec auto	Zetec	192	111	12.2	N/A	11.2 (25.2)	6.2 (45.6)	8.0 (35.3)
1.8i 16V Zetec	Zetec	181	123	10.2	13.4	10.2 (27.7)	6.0 (47.1)	7.6 (37.2)
2.0i 16V Zetec	Zetec	207	125	9.2	9.5	11.6 (24.4)	7.1 (39.8)	8.7 (32.5)
4-door Focus								
1.6i 16V Zetec	Ghia	167	115	11.0	15.3	9.4 (30.1)	5.6 (50.4)	7.0 (40.4)
1.6i 16V Zetec auto	Ghia	186	111	12.3	N/A	10.9 (25.9)	6.0 (47.1)	7.8 (36.2)
1.8i 16V Zetec	Ghia	179	123	10.3	13.5	10.3 (27.4)	5.9 (47.9)	7.5 (37.7)
2.0i 16V Zetec	Ghia	205	125	9.3	9.6	11.6 (24.4)	6.9 (40.9)	8.6 (32.8)
1.8 TDdi	Ghia	142	114	12.6	12.7	7.1 (39.8)	4.2 (67.3)	5.4 (52.3)
5-door Focus								
1.4i 16V Zetec	CL	153	106	14.4	17.0	8.5 (33.2)	5.2 (54.3)	6.4 (44.1)
1.6i 16V Zetec	Zetec	169	115	10.9	15.2	9.4 (30.1)	5.7 (49.6)	7.1 (39.8)
1.6i 16V Zetec	LX, Ghia	167	115	10.9	15.2	9.4 (30.1)	5.6 (50.4)	7.0 (40.4)
1.6i 16V Zetec auto	Zetec	192	110	12.2	N/A	11.2 (25.2)	6.2 (45.6)	8.0 (35.3)
1.6i 16V Zetec auto	LX, Ghia	188	110	12.2	N/A	10.9 (25.9)	6.1 (46.3)	7.8 (36.2)
1.8i 16V Zetec	Zetec	181	123	10.3	13.5	10.2 (27.7)	6.0 (47.1)	7.6 (37.2)
1.8i 16V Zetec	LX, Ghia	181	123	10.3	13.5	10.3 (27.4)	6.0 (47.1)	7.6 (37.2)
2.0i 16V Zetec	Zetec	212	125	9.3	9.6	11.8 (23.7)	7.2 (39.2)	8.9 (31.7)
2.0i 16V Zetec	Ghia	207	125	9.3	9.6	11.6 (24.4)	6.9 (40.9)	8.7 (32.5)
1.8 TDdi	Zetec	145	114	12.5	12.8	7.2 (39.2)	4.5 (62.8)	5.5 (51.4)
1.8 TDdi	CL, LX, Ghia	143	114	12.5	12.8	7.2 (39.2)	4.4 (64.2)	5.4 (52.3)
5-door Estate								
1.6i 16V Zetec	Zetec	169	115	11.3	16.0	9.4 (30.1)	5.7 (49.6)	7.1 (39.8)
1.6i 16V Zetec	LX	167	115	11.3	16.0	9.4 (30.1)	5.6 (50.4)	7.0 (40.4)
1.6i 16V Zetec auto	Zetec	195	110	12.7	N/A	11.2 (25.2)	6.4 (44.1)	8.1 (34.9)
1.6i 16V Zetec auto	LX	191	110	12.6	N/A	11.1 (25.4)	6.2 (45.6)	8.0 (35.3)
1.8i 16V Zetec	Zetec	184	123	10.7	13.8	10.4 (27.2)	6.1 (46.3)	7.7 (36.7)
1.8i 16V Zetec	LX, Ghia	181	123	10.7	13.8	10.4 (27.2)	6.0 (47.1)	7.6 (37.2)
2.0i 16V Zetec	Zetec	212	125	9.6	9.7	11.8 (23.7)	7.2 (39.2)	8.9 (31.7)
2.0i 16V Zetec	Ghia	205	125	9.6	9.7	11.6 (24.4)	6.9 (40.9)	8.6 (32.8)
1.8 TDdi	Zetec	145	114	12.9	13.2	7.2 (39.2)	4.5 (62.8)	5.5 (51.4)
1.8 TDdi	CL, LX, Ghia	143	114	12.9	13.2	7.2 (39.2)	4.4 (64.2)	5.4 (52.3)

For any information pertaining to AFV vehicles, please consult your local Ford Dealer for full details.

\*In 4th gear  
<sup>1</sup>All CO<sub>2</sub> emissions figures in g/km and fuel consumption figures in L/100 km (mpg) are from officially approved tests under the Passenger Car Fuel Consumption Order 1983 and in accordance with EEC Directive 93/116/EC.  
 The Government CO<sub>2</sub> emissions and fuel consumption test figures shown in the chart do not express or imply any guarantee of the fuel consumption of a car of the class in question. All the figures are based on tests conducted on vehicles with standard wheels and tyres; optional or accessory wheels and tyres may have an effect on the emissions and fuel consumption of a vehicle.

### Note:

#### Urban

An engine started from cold in laboratory conditions operated at varying speeds, maximum 31 mph, average 12 mph over a theoretical distance of 2.5 miles (4 km).

#### Extra Urban

Conducted immediately after the urban cycle, it consists of half steady speed driving and half varying speed driving, maximum 75 mph over a distance of 4.3 miles (7 km).

#### Combined

This is an average of the two parts of the test, weighted by the distances covered in each part.

All vehicles are 5-speed manual unless auto stated.

All petrol engines are equipped with a catalytic converter.



## specifications

CL Zetec Zetec 2.0i LX Ghia Ghia 2.0i

### Exterior Appearance and Styling

Bumpers – Body colour	-	-	-	-	-	-
Door mirrors – Manual internal control, body colour housings	-	-	-	-	-	-
Door mirrors – Electrically-operated and heated, body colour housings	-	-	-	-	-	-
Heated rear window	-	-	-	-	-	-
Heated windscreen – 'Quickclear' with heated washer jets	-	-	-	-	-	-
Radiator grilles – Black, slatted	-	-	-	-	-	-
Radiator grilles – Black, mesh	-	-	-	-	-	-
Side skirts – Black (3 and 5-door only)	-	-	-	-	-	-
Tinted glass	-	-	-	-	-	-

### Exterior Functional

Anti-lock brakes with traction control	-	-	-	-	-	-
Diagonally-split brakes with dual-line servo-assistance and ventilated front discs	-	-	-	-	-	-
Rear brakes – Drums	-	-	-	-	-	-
Rear brakes – Discs	-	-	-	-	-	-
Power-assisted rack-and-pinion steering	-	-	-	-	-	-
Rear suspension – Independent Control Blade multi-link system, anti-roll bar	-	-	-	-	-	-
Sports suspension	-	-	-	-	-	-
Body – Galvanised, with anti-perforation twelve year guarantee	-	-	-	-	-	-
Recyclability – Vehicles at least 85 percent recyclable	-	-	-	-	-	-
Front fog lights	-	-	-	-	-	-
Rear fog light, reversing light, high-mounted rear brake light	-	-	-	-	-	-
Wipers – Front, two-speed plus intermittent with electric wash	-	-	-	-	-	-
Wipers – Front, two-speed plus variable interval intermittent with electric wash	-	-	-	-	-	-
Wipers – Tailgate wiper plus intermittent with electric wash (not 4-door)	-	-	-	-	-	-

### Safety and Security

Driver's and front passenger's airbags*	-	-	-	-	-	-
Electronic Stability Programme (ESP)	-	-	-	-	-	-
Fuel cut-off – Inertia switch (petrol only)	-	-	-	-	-	-
Horn – Single note	-	-	-	-	-	-
Horn – Dual note	-	-	-	-	-	-
Immobiliser – Safeguard Passive Anti-Theft System (PATS)	-	-	-	-	-	-
Locks – High-security, anti-burst, shielded with strengthened mountings and child proof on rear doors	-	-	-	-	-	-
Locks – Central locking	-	-	-	-	-	-
Locks – Remote with two-stage central, double locking	-	-	-	-	-	-
Locking fuel filler door	-	-	-	-	-	-
Side impact door beams, front and rear. Steel safety cage	-	-	-	-	-	-
Vehicle Identification Number (VIN) – Visible	-	-	-	-	-	-

### Seats and Seat Belts

Front seat – Driver's manual height adjustment	-	-	-	-	-	-
Front seat – Driver's power height and manual lumbar adjustments	-	-	-	-	-	-
Front seats – Sports-style	-	-	-	-	-	-
Front seats – Anti-submarining with height-adjustable head restraints	-	-	-	-	-	-
Rear seat – 60:40 split back	-	-	-	-	-	-
Rear seats – Two head restraints, height-adjustable	-	-	-	-	-	-
Rear seats – Two head restraints, height-adjustable, third fixed centre head restraint	-	-	-	-	-	-
Rear seat – Folding centre armrest	-	-	-	-	-	-
Seat belts – Front, inertia reel, with grabbers, pre-tensioners and height-adjustable mounts. Rear, three inertia reel, lap and diagonal	-	-	-	-	-	-

### Carpet and Trim

Gear knob – Medium grey metallic	-	-	-	-	-	-
Gear knob – Leather with bright rim surround	-	-	-	-	-	-
Grey metallic door trim inserts and centre stack bezel	-	-	-	-	-	-
Woodgrain-effect door trim inserts, centre stack bezel and console top plate (Dark wood with Midnight Black interior trim)	-	-	-	-	-	-
Scuff plates – Front, bright with Ghia script	-	-	-	-	-	-
Steering wheel – Leather-trimmed	-	-	-	-	-	-

Every Ford Focus is impressively equipped with these standard features.

Check out these model-specific features and specify the Ford Focus that's right for you.



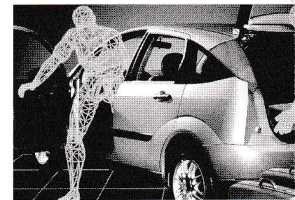
	CL	Zetec	Zetec 2.0i	LX	Ghia	Ghia 2.0i
<b>Instruments and Controls</b>						
Instrument cluster – Black dials with orange pointers	-			-	-	-
Instrument cluster – Grey metallic dials with red pointers		-	-			
Fuel computer						-
Steering column – Reach and rake adjustable	-	-	-	-	-	-
Headlight levelling control	-	-	-	-	-	-
Illuminated heater controls – 4-speed fan, pollen filter. Four MicronAir filtered vents with temperature and direction control. Windscreen defrost vents including wiper park defrost capability	-	-	-	-	-	-
Tailgate/boot release – Interior power release	-	-	-	-	-	-
Tailgate/boot release – Remote on key		-	-	-	-	-
Warning indicators for glow plugs on (diesel only), brake system, airbags, door ajar, low fuel level and lights on warning alarm	-	-	-	-	-	-
<b>Comfort and Convenience</b>						
Air conditioning – CFC-free			-	-	-	-
Accessory socket/cigar lighter	-	-	-	-	-	-
Air recirculation switch and pollen filter	-	-	-	-	-	-
Battery saver – Switches off interior lights after 20 minutes	-	-	-	-	-	-
Centre console – With front cup holders, coin holder, pen storage, cassette storage, rear ashtray	-	-	-	-	-	-
Courtesy light – Centre-mounted with map light with theatre-style dimming and delayed switch-off	-	-	-	-		
Courtesy lights – Centre-mounted with two map lights with theatre-style dimming and delayed switch-off, and rear courtesy light					-	-
Light – Luggage compartment	-	-	-	-	-	-
Luggage net (estates only)					-	-
Tonneau cover – Luggage compartment (estates only)	-	-	-	-	-	-
Stowage – Front seat backs and front door stowage	-	-	-	-	-	-
Windows – Front, electrically-operated with one-shot lowering on driver's side	-	-	-	-	-	-
Windows – Rear, electrically-operated with global close feature and bounce-back						-
<b>Audio</b>						
Stereo radio/cassette – Model 4000N RDS, removable control panel, 'Keycode' anti-theft coding, 4 speakers	-	-				
High-power stereo radio/cassette – Model 5000N RDS EON, column-mounted remote controls, removable control panel, 'Keycode' anti-theft coding, 4 speakers				-	-	-
Stereo radio/CD – Model 6000N RDS EON, column-mounted remote controls, removable control panel, 'Keycode' anti-theft coding, 4 speakers			-			
CD autochanger						-
Aerial – Roof-mounted	-	-	-	-	-	-

## options available at extra cost

	CL	Zetec	Zetec 2.0i	LX	Ghia	Ghia 2.0i
<b>Optional Equipment</b>						
Airbag – Front side impact airbags*			-			-
Airbag – Delete passenger's airbag	-	-	-	-	-	-
Alarm – Interior scan and perimeter (not available on 3-door)		-	-	-	-	-
Alarm – Perimeter (3-door only)		-	-			
Automatic transmission (1.6i only)		-		-	-	
Front fog lights and centre rear head restraint (not available on 3-door)	-			-		
Roof rails (estates only)	-	-	-	-	-	-
'Space saver' spare wheel in lieu of full-size spare	-			-	-	
Sunroof – Manual (not available on 3-door CL)	-	-	-	-	-	-
Suspension – Heavy-duty (estates only)	-			-		
<b>Audio</b>						
CD upgrade – 6000N RDS EON with column-mounted remote controls in lieu of 4000N RDS (not available on 3-door CL)	-	-				
CD upgrade – CD autochanger				-	-	
<b>Body Colour</b>						
Metallic paint	-	-	-	-	-	-

\*Note: A rear-facing child seat should never be placed in the front passenger seat when the Ford vehicle is equipped with a front passenger's or side airbags.

For any information pertaining to AFV vehicles, please consult your local Ford Dealer for full details.



Personalise your Ford Focus with selections from the range of extra-cost Ford options.



Ergonomically-designed large bezel audio systems are easy to use – and sound great too.



## option packs

Option Packs enable you to add even more to your car's unique personality. Depending on your choice of model, specify the Climate Pack, Reflex Pack, Styling Pack or Luxury Pack.

	CL	Zetec	Zetec 2.0i	LX	Ghia	Ghia 2.0i
<b>Option Packs</b>						
Climate Pack – CFC-free air conditioning, heated windscreen – 'Quickclear' – with heated washer jets and electrically-operated and heated door mirrors	-	-				
Climate Pack – Manual tilt/slide sunroof, heated windscreen – 'Quickclear' – with heated washer jets and electrically-operated and heated door mirrors				-		
Reflex Pack – Anti-lock brakes (with rear discs in lieu of drums on 1.8i), traction control and front side impact airbags*	-	-		-	-	
Styling Pack – Metallic paint and 6x15 alloy wheels (steel 'space saver' spare) with 195/60 R15-H tyres					-	
Luxury Pack – Leather trim and power rear windows with global close feature					-	
Luxury Pack – Leather trim and cruise control						-

## body colours

Create an impact with your choice from the following range of water-based paint finishes.

### INTERIOR FABRIC COLOUR:

B – Midnight Black, P – Medium Parchment  
/ – Choice of fabric colour

\* Metallic paint is extra cost.

\*\* Leather trim is extra cost.

	CL Finesse	Zetec Swift	Zetec 2.0i Swift	LX Finesse	Ghia Venice	Ghia Leather**
<b>Seat Fabric</b>						
<b>Solid Body Colours</b>						
Bright Blue	B	B		B	B	B
Diamond White	B	B		B	B	B
Radiant Red	B	B	B	B	B	B
<b>Metallic Body Colours*</b>						
Light Sapphire Blue	B	B	B	B	B/P	B/P
Aqua Frost	B	B		B	B/P	B/P
Moondust Silver	B	B	B	B	B	B
<b>Mica Metallic Body Colours*</b>						
Citrus Gold	B	B		B	B/P	B/P
Pacific Green	B	B		B	B/P	B/P
Panther Black	B	B	B	B	B/P	B/P
Pepper Red	B	B		B	B/P	B/P
State Blue	B	B		B	B/P	B/P

Note: The car images used are to illustrate body colours only and may not reflect current build levels. Colours and trims reproduced within this brochure may vary from the actual colours, due to the limitations of printing processes used.

## wheelcovers and alloy wheels

Stylish wheelcovers. Or smart, tough alloys. Availability depends on your choice of model.

	CL	Zetec	Zetec 2.0i	LX	Ghia	Ghia 2.0i
<b>Exterior Features and Styling</b>						
Wheels – 5½x14" steel with 175/70 R14-T tyres, wheelcovers and full size spare (1.4i only)	-					
Wheels – 5½x14" steel with 185/65 R14-H tyres, wheelcovers and full size spare (not available on 1.4i CL)	-			-	-	
Wheels – 6x15" alloy with 195/55 R15-H tyres, 'space saver' steel spare (1.4i 3-door only)		-				
Wheels – 6x15" alloy with 195/60 R15-V tyres, 'space saver' steel spare (not available on 1.4i 3-door)		-				-
Wheels – 6x16" alloy with 205/50 R16-V tyres, 'space saver' steel spare			-			





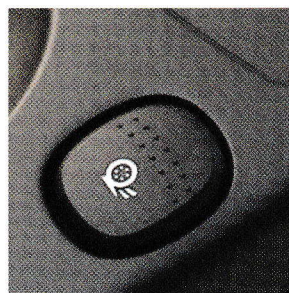
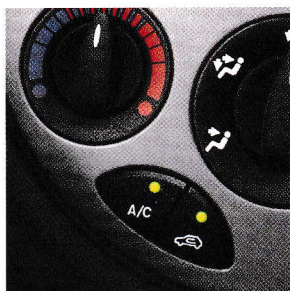
### styling pack

Available on Ghia

- Alloy wheels
- Metallic paint

### climate pack

Available on CL, Zetec and LX • Air conditioning (CL and Zetec) • Sunroof (LX) • 'Quickclear' heated windscreen with heated washer jets • Electrically-operated and heated door mirrors



### reflex pack

Available on CL, Zetec, LX, 1.6/1.8/1.8 TDDi Ghia • Electronic anti-lock brakes with traction control • Front side airbags\*

### luxury pack

Available on Ghia

- Leather trim
  - Electrically-operated rear windows with global closing
- Available on Ghia 2.0i
- Leather trim
  - Cruise control

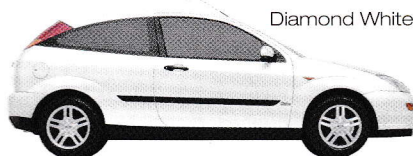


\*Note: A rear-facing child seat should never be placed in the front passenger seat when the Ford vehicle is equipped with a front passenger's or side airbag.

### Solid Body Colours



Bright Blue

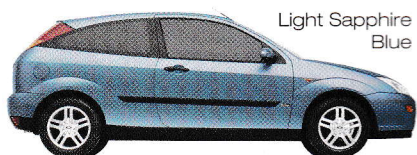


Diamond White



Radiant Red

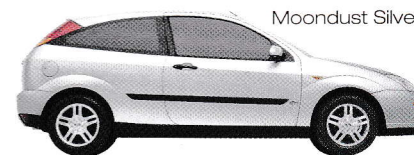
### Metallic Body Colours



Light Sapphire Blue

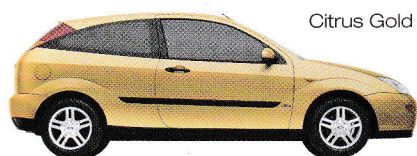


Aqua Frost



Moondust Silver

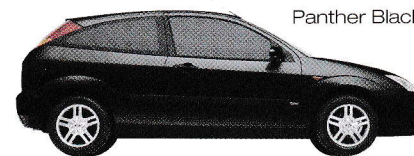
### Mica Metallic Body Colours



Citrus Gold



Pacific Green



Panther Black



Pepper Red



State Blue

## trims

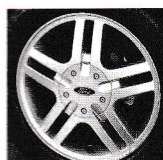
The range of stylish trims ensures Ford Focus looks as good inside as it does outside.



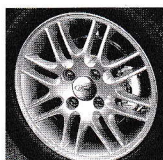
14" wheelcover  
(available on CL and LX)



14" wheelcover  
(available on Ghia)



15" or 16" alloy  
(available on Zetec)



15" alloy (available on Ghia)



finesse in midnight black



swift in midnight black



venice in midnight black



venice in medium parchment



leather in midnight black



leather in medium parchment













one and a half miles of stop-start traffic, two hill starts, and the usual crawl around the city centre – **can't wait** until I do it again.

## instant response

Even with the lightest hydraulic clutch and a precise gearshift, there are times when manual gear changing can become a chore.

That's why we have developed Electronic Shift Control or ESC. A new-generation 'smart' transmission. Engineered to take the strain out of driving. Not the fun. Compact and lightweight, the all-new transmission is managed by the race-developed powertrain control module. By electronically linking the engine and transmission, Ford Focus benefits from a truly integrated driveline, with each component working in harmony with the next.





Electronic sensors monitor various inputs, including ambient temperature, engine load and road speed. The system then selects the best possible gearshift to suit the prevailing conditions. Even your driving style is analysed, with the transmission automatically altering its shift pattern to provide both sport and economy modes.

Four forward speeds, an overdrive top and lock-up torque converter mean that ESC is remarkably efficient. Fuel economy and

performance characteristics are also exceptionally good, while the gearshift quality and speed of response set new standards in its class.



Developed specifically for Ford Focus, the new-generation ESC transmission delivers class-leading refinement and convenience.

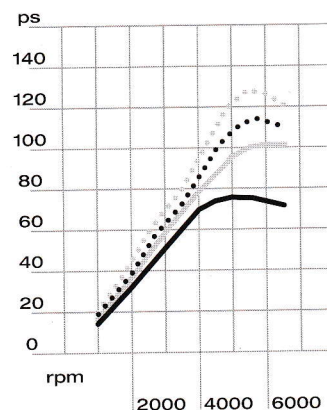


# engines

## the Zetec engine family

Ford Focus features the most efficient engine range in Ford history. The four lightweight 16-valve petrol engines (1.6-litre engine pictured right) combine exceptional fuel economy with rewarding performance. Each version has been engineered to deliver outstanding levels of low-speed torque for flexible, responsive performance.

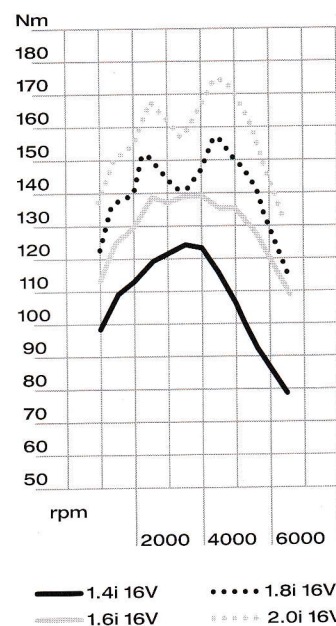
### Zetec power



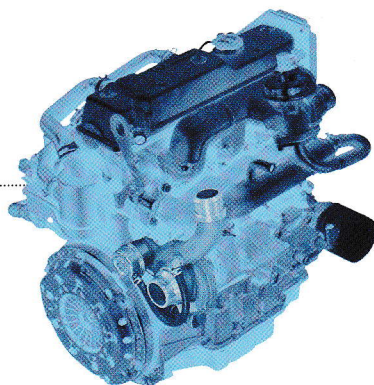
## the 1.8-litre turbo diesel engine

Refined, powerful and economical, the 1.8-litre direct injection intercooled turbo diesel engine features the latest-generation electronic fuel injection, optimised for smooth torque delivery, improved running characteristics and outstanding driveability.

### Zetec torque



The 1.8-litre diesel delivers outstanding fuel economy and reduced emissions.

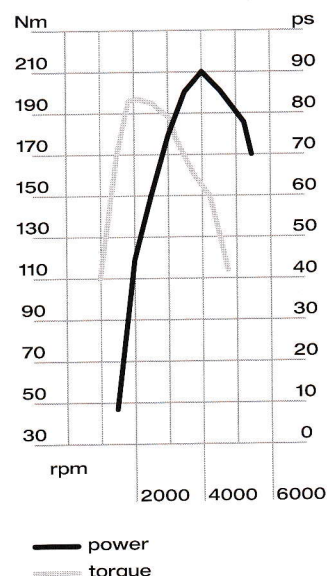


## Alternative Fuel Vehicles (AFVs)

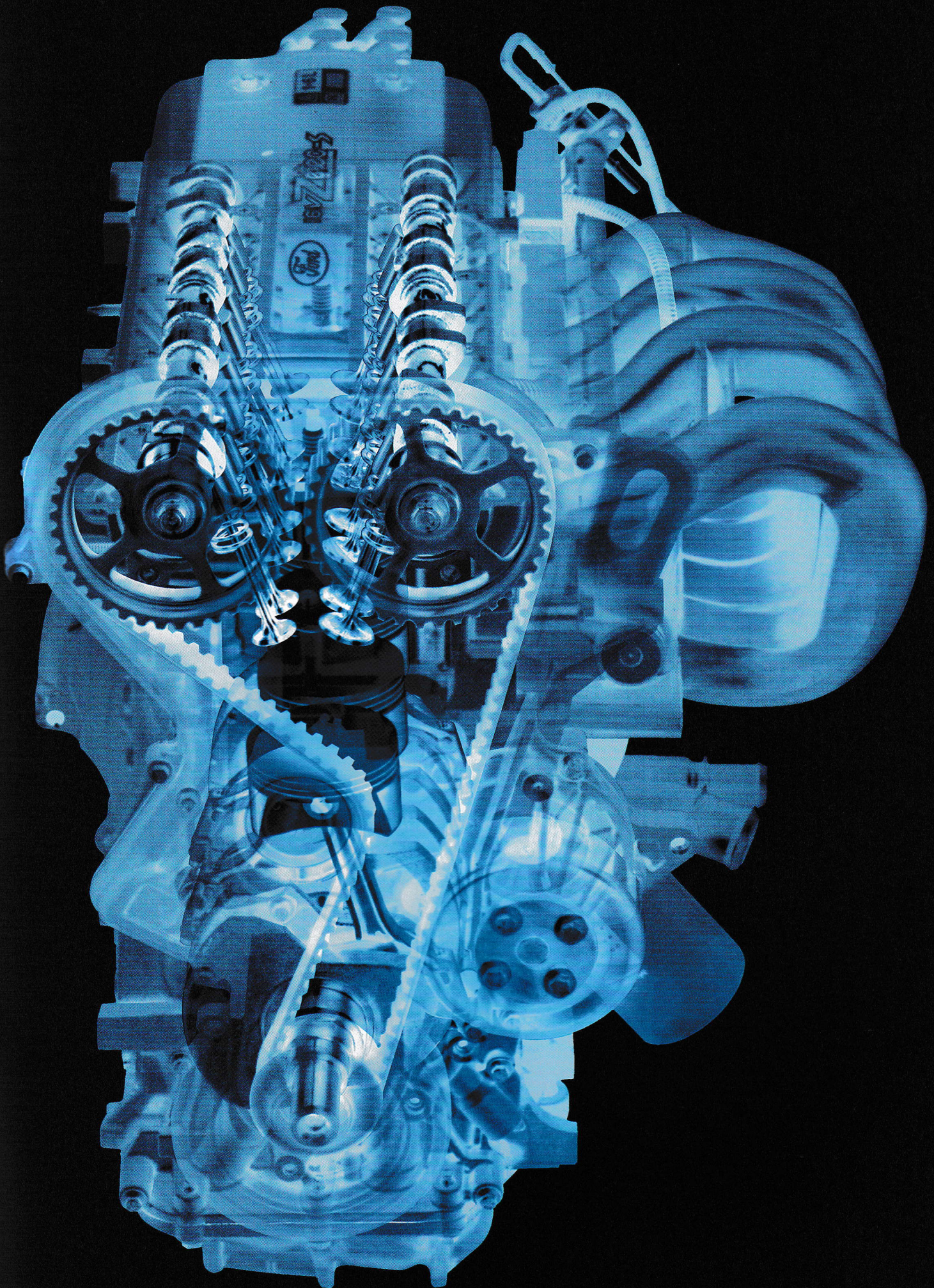


Ford Focus AFVs operate with a bi-fuel system which combines the 115 PS 1.8-litre Zetec engine with Liquefied Petroleum Gas (LPG). In addition to low running costs and reduced emissions, they deliver all the driveability of conventionally fuelled models.

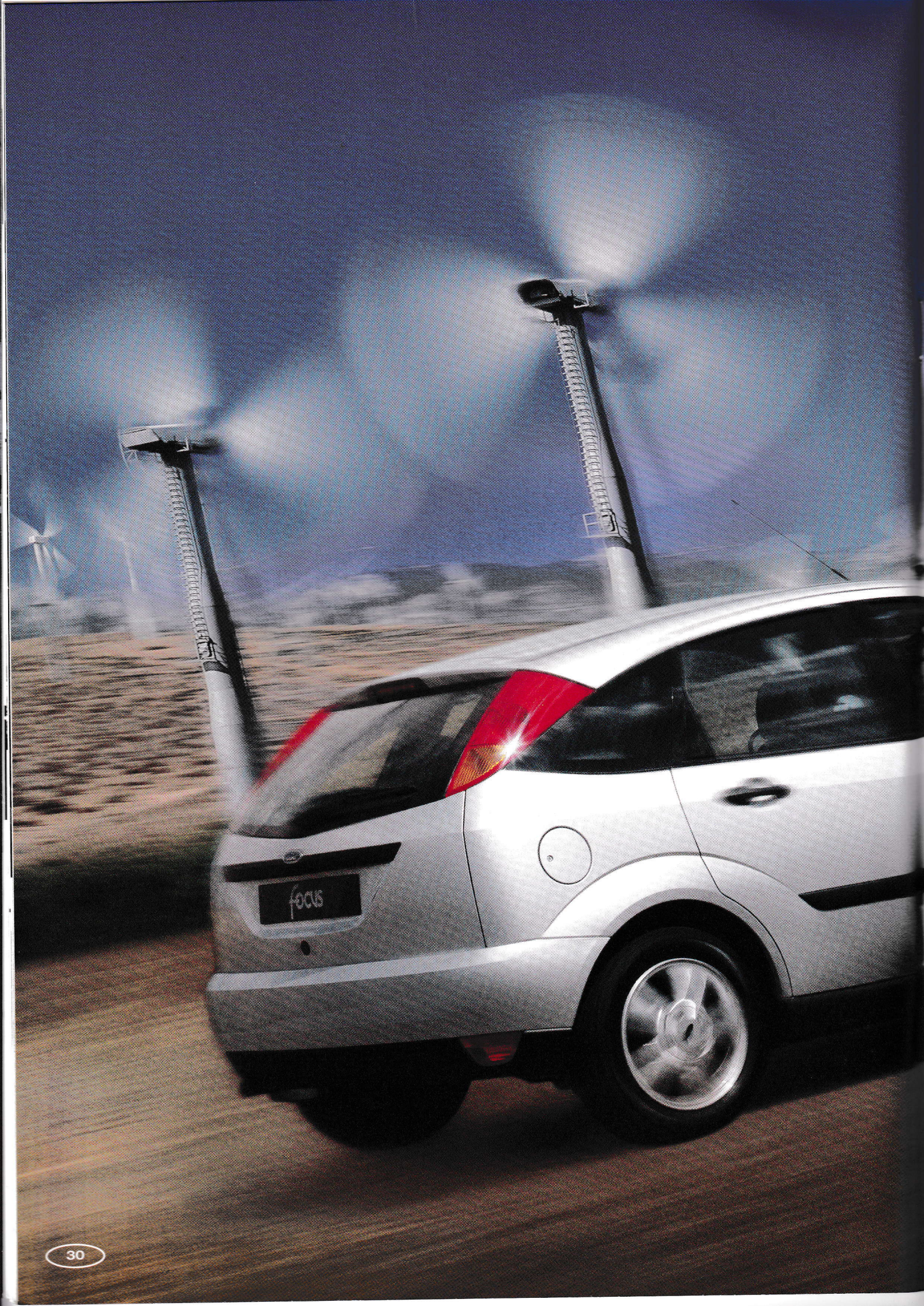
### 1.8 TDdi















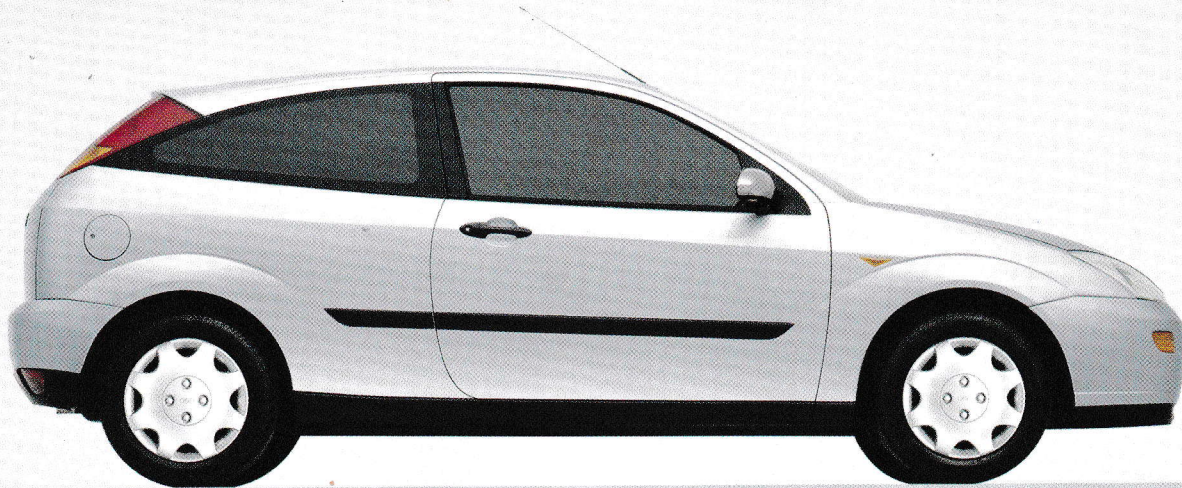














Ford Focus raises expectations about what a car in its class can achieve. It's challenging, inspiring and innovative. And because it doesn't compromise, you don't have to either. There's no need to sacrifice performance for economy, or design for functionality. In fact, because Ford Focus has been designed and built to be exceptional in every area – from driving dynamics to interior space and comfort – there's no need to make any distinction at all between the features and attributes you need and those you want.

---

**Style and space** are combined perfectly. The flowing lines and crisp edges of the exciting New Edge design ensures Ford Focus looks the part and delivers outstanding interior space.

**Performance and economy** go hand in hand in the Ford Focus. The range of fun-to-drive engines includes the best-in-class fuel economy of the 1.6 16V petrol engine and the 1.8 direct injection turbo diesel unit.

**Size and safety** together mean Ford Focus is manoeuvrable, easy to park and has an array of 'large car' safety features such as twin airbags and a rigid safety cell as standard across the range.

**Handling and comfort** come in equal measure. Fully independent control blade rear suspension enhances ride quality, longitudinal compliance boosts steering precision and passive rear-wheel steering gives greater stability.

**Design and functionality** perfectly complement each other inside the Ford Focus. The distinctive New Edge interior is combined with a logical, intuitive control layout.

Why compromise? Take advantage of outstanding customer choice to specify the Ford Focus bodystyle, engine, colour, and options that are right for you. Then get into the driving seat and expect more.

To find the location of your nearest Ford Dealer and arrange a test drive, simply call the Ford Focus Information Service on **0845 600 3000**.



## the ford feature model

To simplify your decision-making, we now offer a Ford Feature Model for each range. Each Ford Feature Model includes, as standard, the most popular features from the range. Most importantly, Ford Feature Models give you great value for money. The Ford Focus Feature Model is the Focus Zetec.

## fordrive

The easiest way to get to know your preferred Ford Feature Model is through our Fordrive Demonstration Programme. This gives you a complete test drive experience professionally and efficiently, with the services of your own Fordrive co-ordinator.

## optimise

For a straightforward way of financing your chosen model, Ford Credit has developed Optimise, a range of financial packages that can be tailored to suit your needs. Simple to arrange and easy to understand, you're sure to find a finance plan that's right for you. Optimise your time and arrange your vehicle and finance together.

## ford insure

Ford Insure sets new standards in motor insurance for your Ford car. It's simple, far-reaching and available to every Ford car owner, with everything you demand from an insurance policy – and more. And now customers can experience Ford Insure whenever they buy a new Ford car. Ford Insure Driveaway Cover gives them 21 days' full Ford Insure coverage free from the moment of purchase.

## ford service connect

Ford Service Connect Plans are the best way to look after you and your Ford from the day you take delivery. There is a choice of plans to suit your particular needs. All servicing requirements plus extensions to your twelve-month warranty and RAC membership can be covered, enabling you to enjoy up to three years of worry-free motoring.

## rapid fit

The national fast-fit network backed by Ford, offering you the convenience of a 'no-appointment-necessary, while-you-wait' service covering tyres, exhausts, brakes, batteries and much more. There are over 300 sites nationwide.

## ford accident repair centres

If your Ford is involved in an accident, your Ford Dealer is best placed to return it to its pre-accident condition. Dealerships displaying the Ford Accident Repair Centre sign all meet the rigorous customer service and repair quality standards laid down by Ford, and offer a three-year workmanship guarantee.

## ford customer assistance centre

In the unlikely event that your Ford Dealer can't help you or you need to speak to Ford directly, the Ford Customer Assistance Centre is just a phone call away. Call local rate **0845 841 1111**.

**The Government fuel figures** do not express or imply any guarantee of the fuel consumption of any particular car. The cars themselves have not been tested and there are inevitably differences between individual cars of the same model. In addition, a car may incorporate particular modifications. Furthermore, the driver's style and road and traffic conditions, as well as the extent to which the car has been driven and the standard of maintenance, will affect its fuel consumption.

**Insurance Groups** are only as recommended by the Association of British Insurers. You should always consult your insurance adviser for confirmation.

### Illustrations, descriptions and specifications.

This catalogue was correct at the time of going to print. However, Ford policy is one of continuous product development. The right is reserved to change specifications, colours and prices of the models and items illustrated and described in this publication at any time. For the latest details always consult your Ford Dealer.

**Optional Equipment.** Throughout this publication, wherever a feature is described as being an 'Option' or 'Optional Fitment/Pack' etc, you should assume that it will be at extra cost to the base vehicle, unless specifically stated to the contrary.

All models and colour combinations are subject to availability.

BJN 14599. Designed and produced by Burrows WCJ, Shenfield, Essex.

Produced by Werbeagentur Zetweka.  
PN 072501/0003/300m/GB

**Published by Ford Motor Company Limited,  
Brentwood, Essex, England.  
Registered in England No 235446.  
FA 1335/4**

March 2000.

© Ford Motor Company Limited.

[www.ford.co.uk](http://www.ford.co.uk)

Dealer:

