

B14

11.2001

ford**focus**





fordfocus

Conventional compromise is out of the equation with the Ford Focus.
Sacrifice style for space? Performance for economy? We don't think so.

Ingenious yet remarkably functional. Sensible yet very, very, exciting.
The award-winning, ground-breaking, people-focused, Ford Focus.

why focus ④

engineered	4
responsive driving	6
intelligent design	8
easy living	10
true strength	12
thorough protection	14
engine technology	16

which focus ⑱

choice	18
model choice	20
ford focus CL	22
ford focus LX	24
ford focus ghia	26
ford focus zetec	30
personalisation	32
option packs	34
audio	35
credit	36

specification ⑳

technical data	37
personal choice	42



why focus

A car that does what you want, when you want it. That feels made for you,
whatever your shape. That gives the people in your life a big welcome too.

And helps you take safety for granted.

We have taken these fundamental demands to heart. To get the Ford Focus
completely 'right', we examined every aspect of the relationship between you,
your car and the road with a fresh eye and open mind.

engineered

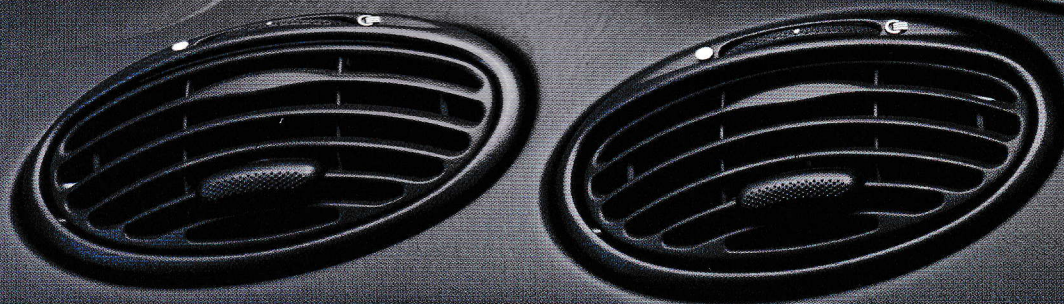
- responsive driving** ○
- intelligent design** ○
- easy living** ○
- true strength** ○
- thorough protection** ○
- engine technology** ○

responsive driving

It's the stiff bodyshell that makes Ford Focus so reassuring to drive and so comfortable to travel in. It gives the all-round independent suspension a rigid platform to work on, for class-leading handling. In turn this reduces noise levels for an exceptionally quiet, compliant ride.

The Ford Focus features multi-link independent rear suspension, usually only found on larger cars. In the Ford Focus, the system features a unique Control Blade, which enables each wheel to react independently to road irregularities. Wheel control, steering precision and handling are enhanced, for class-leading dynamics and stability.

Power steering adds convenience without losing accuracy. Attention was paid to minimising friction to reduce resistance to steering inputs. Each driver steering input is accurately translated into wheel movement, without the 'dead' feeling that can characterise power steering systems. Combined with the stiff bodyshell and independent suspension systems, you really feel in control.



Stiff bodyshell

The torsional and rotational stiffness of the bodyshell gives Ford Focus many far-reaching benefits. Ride comfort and handling are increased, due to the reduction of undamped movement between the shock absorber mounting points. This enables more refined suspension tuning and minimises body roll, to increase the positive road feel.

Unique Control Blade system

The multi-link independent rear suspension features Ford's unique Control Blade system that delivers precise control and superior comfort. The Control Blade is a light, yet strong, one-piece pressed steel component. It is a vital element in delivering vehicle stability and active safety, even in the most challenging driving conditions. The system enables each wheel to react independently, moving upwards and rearwards to absorb bumps in the road. The difference is especially apparent during cornering, accelerating and braking.



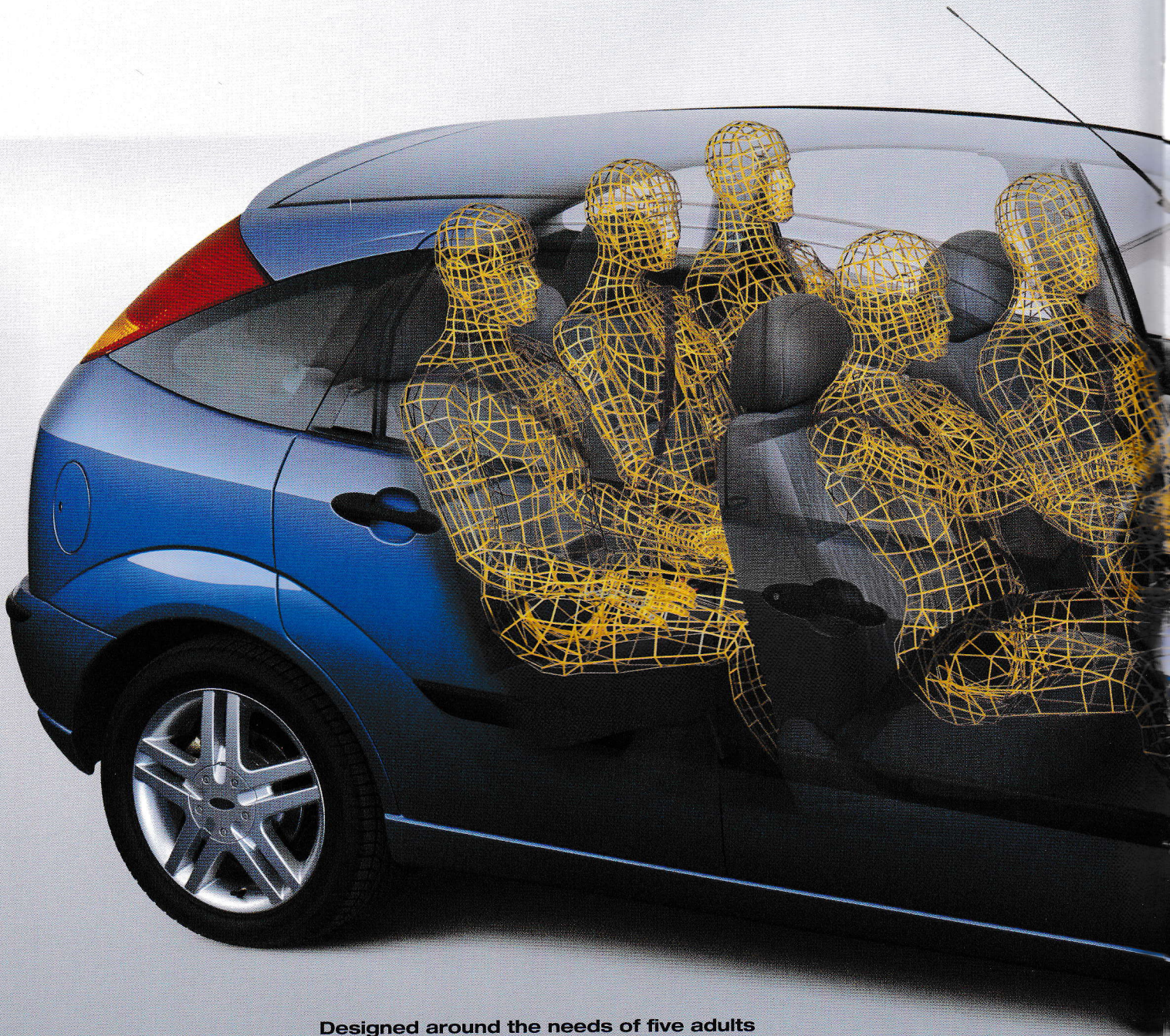
intelligent design

Imagine a car built around you. An environment engineered to meet the needs of five adults.

A car that delivers space, comfort and versatility in equal measure.

This thinking shaped the Ford Focus interior.

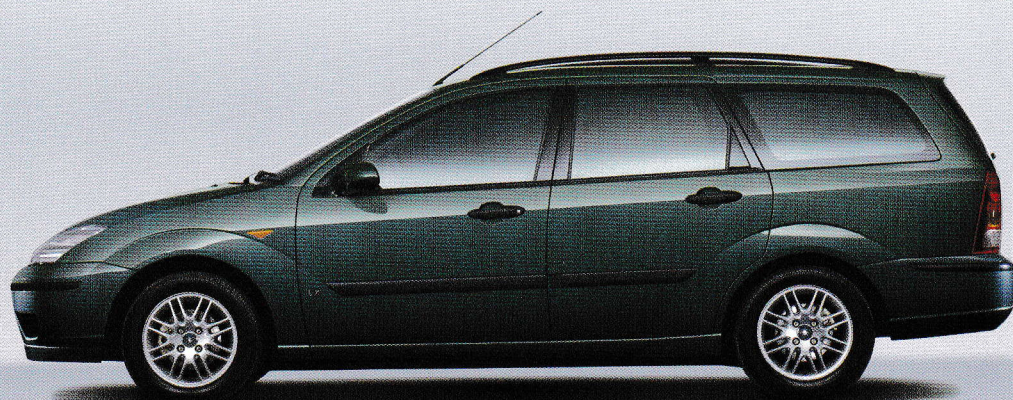
A long wheelbase is fundamental to its design. By maximising interior space, it allows full expression of every Ford Focus design aim.



Designed around the needs of five adults

The idea of maximum comfort and space for everyone drove the design process. There is room in the rear for three large adults to sit comfortably, along with space for four large suitcases to lie flat in the luggage compartment.

Raised seats, widely spaced front seat runners and a higher hip pivot point boosts rear leg room. In turn, the elevated seating position gives passengers a high viewpoint, while the driver gets a commanding view of the road ahead.

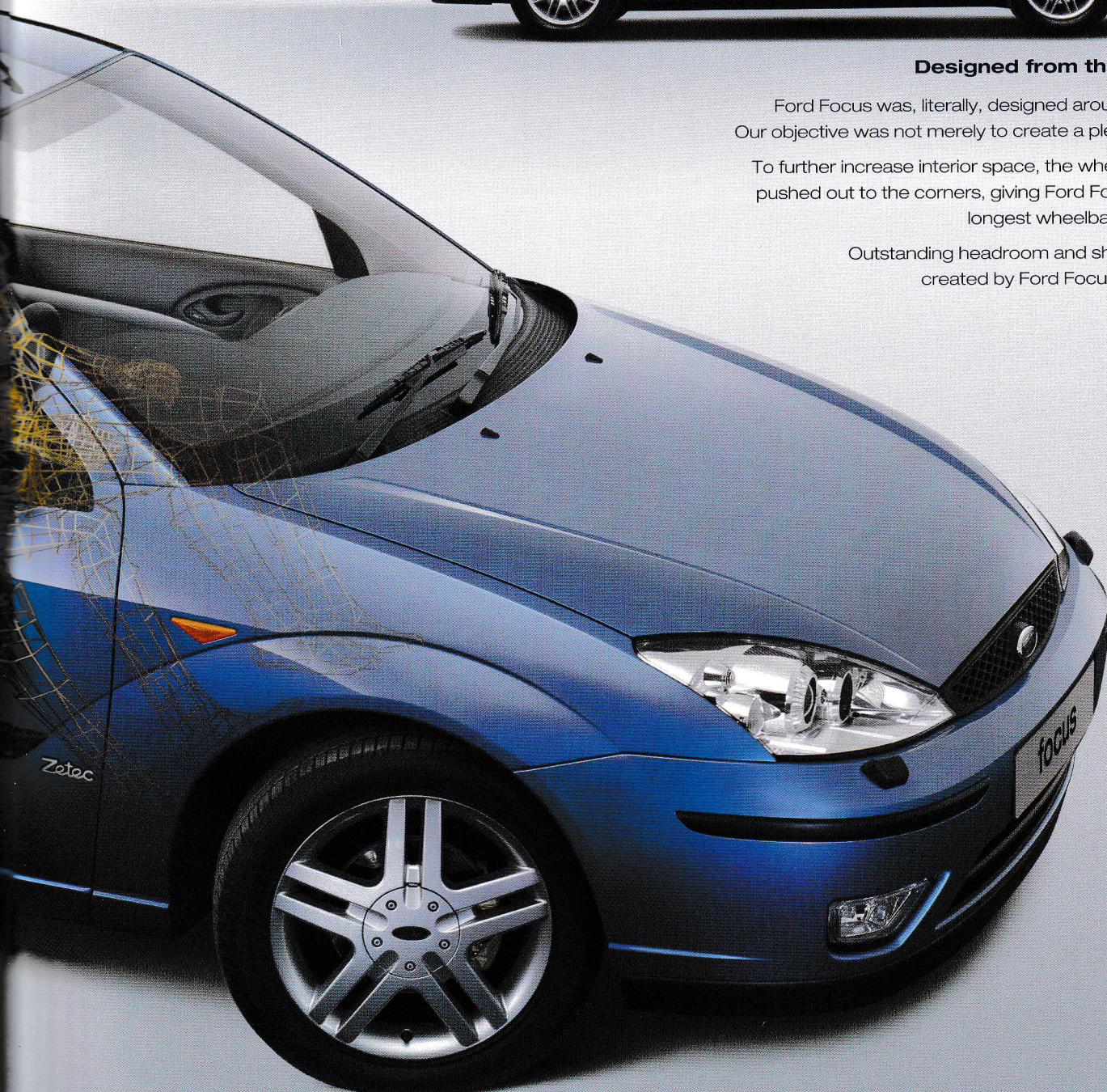


Designed from the inside out

Ford Focus was, literally, designed around the interior. Our objective was not merely to create a pleasing exterior.

To further increase interior space, the wheels have been pushed out to the corners, giving Ford Focus one of the longest wheelbases in its class.

Outstanding headroom and shoulder room is created by Ford Focus' high roofline.



Ergonomics

We used computer-modelling techniques to simulate the movements of occupants of varying sizes, shapes, even ages, and also to define optimum reach zones. We then plotted the ideal position of the seats and steering column, which is adjustable for rake and reach as standard.

Instruments were grouped according to priority, so the air conditioning controls are below the more frequently used audio controls.

Interior climate

Ford Focus keeps you relaxed and fresh. A dust and pollen micro-fibre filter capable of removing all airborne particles down to 3 microns in size is standard. Integrated air conditioning is available, too, to keep you cool. Electronic automatic temperature control is also available, at extra cost.

Set it at the touch of a button for your preferred constant cabin temperature.



easy living

Designed for the real world, Ford Focus is a remarkably easy car to live with, engineered for comfort and convenience.

The quiet smoothness of the cabin environment, which matches that of many larger saloons, is partly a result of the stiffness of the bodyshell, as well as the innovative Control Blade rear suspension. And the suspension's compact design means less intrusion into the boot area, to give more useable space. The high-opening tailgate and low sill ensures small adults can reach inside yet tall adults do not bump their heads. Tall, wide-opening doors and a higher seating position aid entry and exit.

The tailgate release is high on the instrument panel, close to the door so it can be easily operated from inside or outside.

Electric door mirrors are adjustable from the inside, too. Heated windscreens at the rear and, unique to Ford, 'Quickclear' at the front, help to maintain visibility.



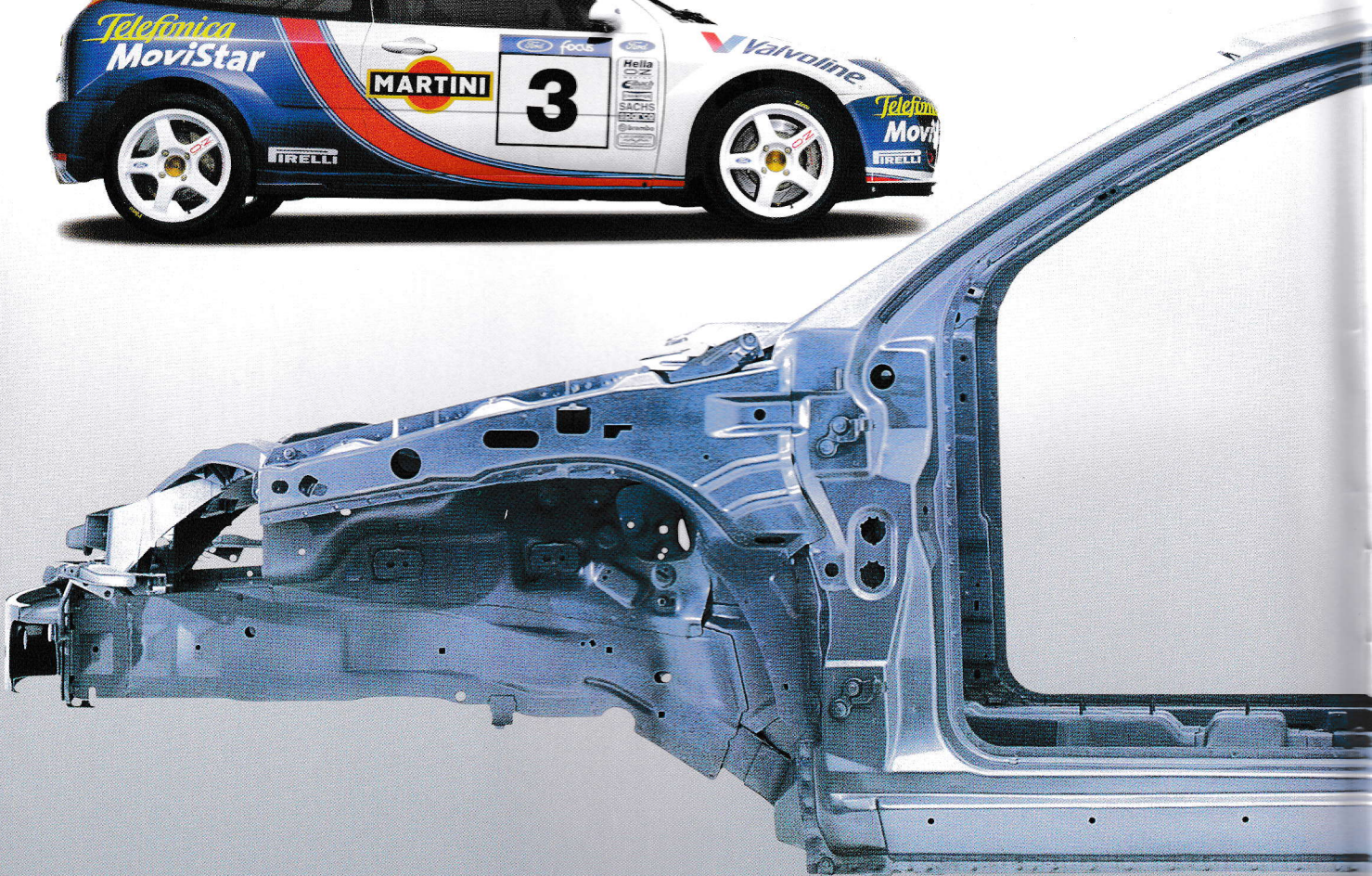
Extreme durability

Ford's racing engineers have developed the Ford Focus World Rally Championship car, a top challenger for rally honours. It builds on the key strengths of the road-going Ford Focus. Rigid bodyshell, exceptional handling and built-in strength.

Its designers, engineers and drivers have pushed this car to the limit and beyond. They have used its outstanding driving dynamics under extreme competition. The victorious results reflect the strengths of the entire Ford Focus range.

Bodyshell

Using the most powerful computing system in the industry, our safety engineers have developed an ultra rigid safety cell, surrounded by energy-absorbing crash zones, to protect the inner passenger compartment.



true strength

The Ford Focus has great durability from the skin onwards. Its 24-stage paint process and fully-galvanized body is just the beginning.

Every aspect of its fit, finish and function has been compared against its competitors. Not just in its class but in the class above.

All manufacturing processes have been scrupulously tested, refined and re-tested. As a result, Ford Focus passes more than 100 different real-world crash tests – exceeding the mandatory legislation.

Numerous features ensure your Ford Focus starts first time. A battery saver protects against flat batteries, by cancelling unnecessary lights left on by mistake. A 'smart' alternator automatically provides the optimum charge rate to dramatically increase battery life and systems performance. A bonnet lock eliminates unwelcome access to the engine compartment via the cabin lever.





Airbags

The driver and front passenger airbags act in harmony with the body structure to provide maximum protection within 50 milliseconds of an impact. Optional head and chest side airbags act as a barrier between the occupant and the side of the vehicle to cushion side impact forces.

Telematics

Telematics is now available. Using a Global Satellite Receiver, this sophisticated technology enables you to access a huge range of information including up-to-the-minute local traffic news, along with route guidance, with instant connection to emergency and breakdown services, automatically activated in the event of an accident where the airbags are deployed.

thorough protection

From active safety features that help you to avoid an accident, to innovations designed to minimise the effects of a collision, Ford Focus gives you every reason to depend on it, in every road situation.

Each seat, including the rear centre seat, has a three-point seat belt, so all your passengers are given the same level of protection. The front seat belts have pre-tensioners that remove the slack from the webbing and pull you securely into the seat, in the event of a sudden impact. Load-limiting front seat belt retractors then pay out the seat belt progressively, limiting potential chest injury. All seats can be fitted with adjustable headrests which feature a new energy-absorbing foam.

Other confidence-building features include a fuel shut-off switch on petrol engine models, which reacts to abrupt changes in vehicle speed, and a decoupling brake pedal that is designed to collapse on impact, helping to reduce the risk of leg injury.

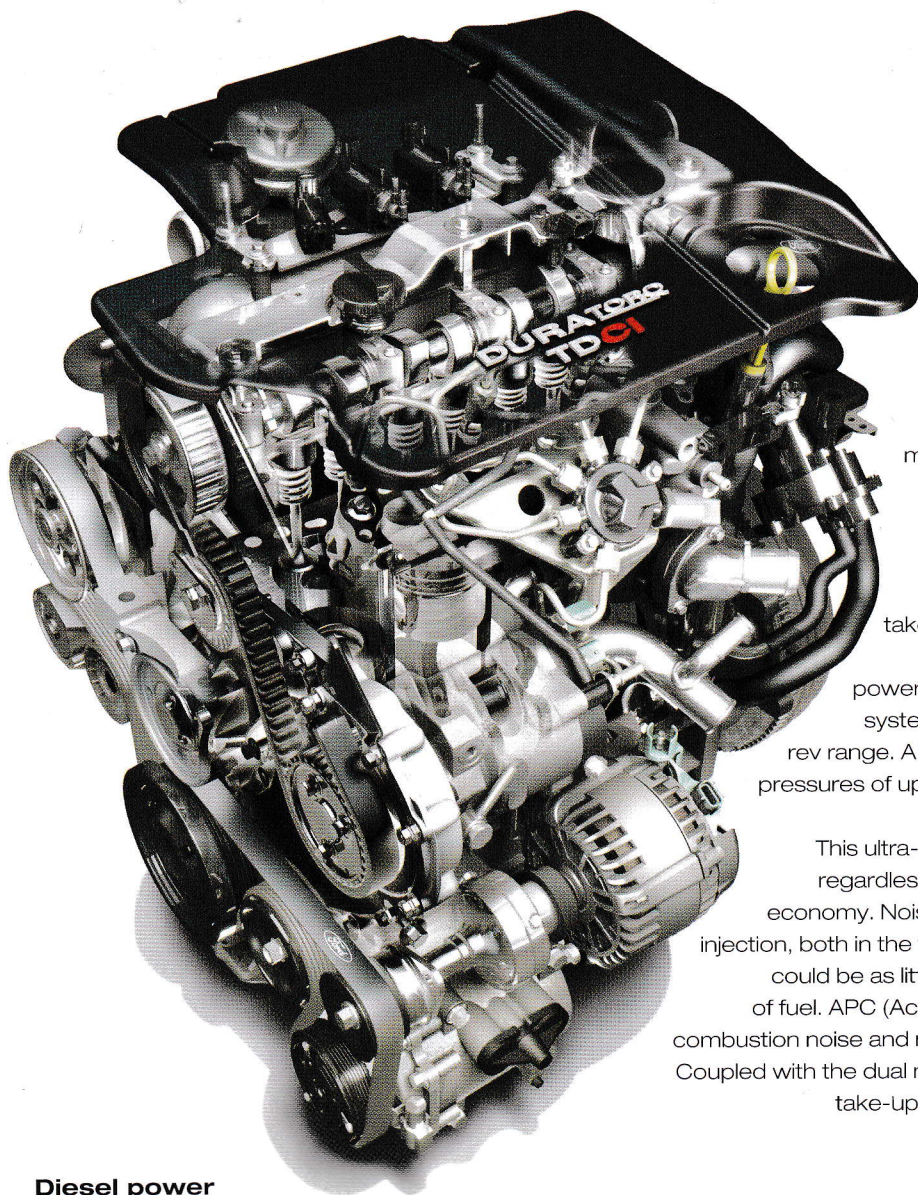
On any road, rain or shine, Ford Focus gives you strong reason to depend on it. When you are faced with the unexpected, an optional four-channel anti-lock braking system (ABS) prevents the wheels from locking, allowing you to steer out of trouble, and an advanced Electronic Stability Programme (ESP) is available (at extra cost on 1.6, 1.8 and 2.0 petrol derivatives) to help maintain control, even under unexpected driving conditions, enhancing Ford Focus' feeling of stability even further.



Crumple zones

Energy-absorbing crumple zones help to minimise the effect of a collision. Side pushers, located between the outer door and interior trim, dissipate crash energy over a wide area. Side impact beams help minimise side intrusion.

Ford Focus passes Ford's own crash standards, that exceed all proposed legislation. It was awarded the four-star Euro New Car Assessment Programme (ENCAP) rating for front and side impact safety.



Diesel technology

The Duratorq TDDi is a 1.8-litre direct injection turbo diesel. It was developed specifically for Ford Focus, to combine responsive performance with economy. It features a state-of-the-art drive-by-wire electronic accelerator control, making the most of its power, with smooth torque delivery and maximum response.

The new common-rail TDCi

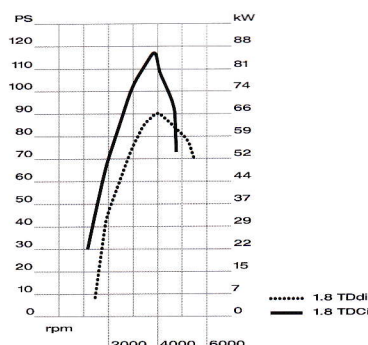
The new common-rail 1.8-litre TDCi engine takes diesel engine refinement to new heights. It produces an exceptionally refined yet powerful drive, thanks to its innovative common-rail system. There's plenty of pulling power across the rev range. A dual-stage vane-cell pump, which generates pressures of up to 1400 bar, injects an ultra-fine spray of fuel into the cylinders with great accuracy.

This ultra-efficient combustion results in smooth power regardless of engine speed, and greatly enhanced fuel economy. Noise Reduction Technology uses high precision injection, both in the timing, and in the volume of fuel injected. This could be as little as every 3 milliseconds and 1 cubic millilitre of fuel. APC (Accelerometer Pilot Control) then 'listens' to the combustion noise and makes adjustments to reduce the noise level. Coupled with the dual mass flywheel which gives a smoother power take-up, the result is an incredibly quiet, refined drive.

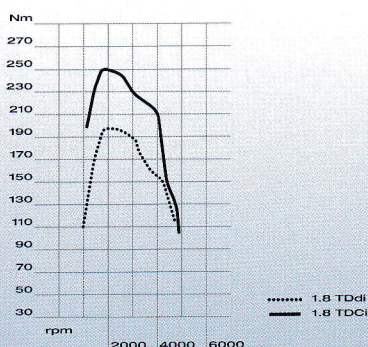
TDCi power

The new 1.8-litre TDCi engine produces 115 PS and 250 Nm of torque at only 1850 rpm. Thanks to its unique 'overboost' capability, it can deliver maximum torque up to 280 Nm, for powerful accelerating and overtaking ability. Its dual-stage vane-cell pump generates pressures of up to 1400 bar meaning fuel can be injected into the cylinders up to 3,000 times per second to optimise engine performance.

Diesel power output



Diesel torque output



Diesel Engine Specifications

Standard diesel engines include: Cylinders – 4 in-line, direct fuel injection with EEC V engine management system, turbo intercooler, oxidation catalyst, exhaust gas recirculation

	Maximum power ^o	Maximum torque ^o
1.8 Duratorq TDDi 1753 cc	66 kW (90 PS) at 4000 min ⁻¹ (rpm)	200 Nm at 2000 min ⁻¹ (rpm)

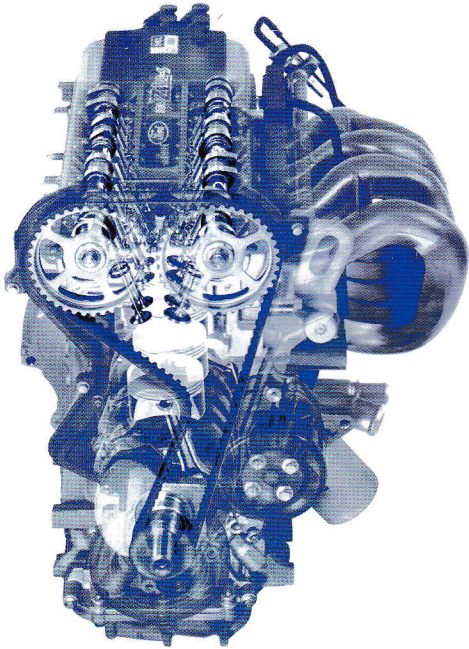
In addition, TDCi features: High-pressure common-rail fuel injection, dual-mass flywheel, variable nozzle turbocharger with intercooler

	Maximum power ^o	Maximum torque ^o
1.8 Duratorq TDCi 1753 cc	85 kW (115 PS) at 3800 min ⁻¹ (rpm)	250 Nm at 1850 min ⁻¹ (rpm)

^oTested in accordance with ISO 1585

engine technology

Our engineers set out to achieve excellent fuel economy with Ford Focus, without compromising on responsiveness and driveability. Low-speed torque, flexibility and smoothness were also key requirements.



Economic engines

All four 16-valve engines feature advanced combustion and catalytic converter technology. They are extremely lightweight with relatively flat torque curves. Engine management systems and gearing calibration optimise engine response and economy. The torque roll axis mounting system helps reduce engine vibration, for a smoother, quieter ride.

The 1.6i 16-valve Zetec engine exemplifies this inbuilt efficiency. Its valve clearances need no adjustment for 100,000 miles while its camshafts are driven by a long-life, reinforced nitride rubber toothed belt. A new, low-noise ancillary drive system is combined with an alloy ladder frame between the base of the block and the crankcase to reduce noise and vibration to extremely low levels.

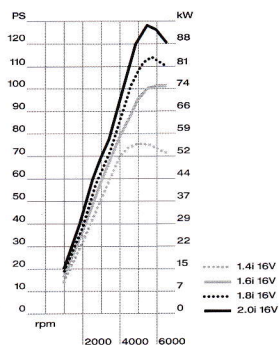
And as a result of utilising this and other advanced technology, all petrol engines require scheduled servicing at 12,500 mile intervals only.

Transmissions

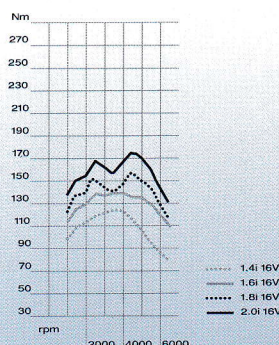
The manual transmission system has a low-inertia clutch with a cable-operated gearshift. This combination delivers superior precision, greater durability and a smoother, quieter and more refined drive. Transmissions on the 2-litre petrol and turbo diesel engines feature a new gear linkage for a more positive and accurate gear change. The gearshift quality and speed of response set new class standards.

Electronic Shift Control is a new-generation 'smart' transmission managed by the race-developed powertrain control module. This sophisticated automatic transmission features an overdrive top and lock-up torque converter.

Petrol power output



Petrol torque output



Petrol Engine Specifications

Standard petrol engines include: Cylinders – 4 in-line, electronic fuel injection with EEC V engine management system, electronic breakerless ignition, catalyst

	Maximum power ^o	Maximum torque ^o
1.4i 16V Zetec 1388 cc	55 kW (75 PS) at 5000 min ⁻¹ (rpm)	123 Nm at 3500 min ⁻¹ (rpm)
1.6i 16V Zetec 1596 cc	74 kW (100 PS) at 6000 min ⁻¹ (rpm)	145 Nm at 4000 min ⁻¹ (rpm)
1.8i 16V Zetec 1796 cc	85 kW (115 PS) at 5500 min ⁻¹ (rpm)	160 Nm at 4400 min ⁻¹ (rpm)
2.0i 16V Zetec 1988 cc	96 kW (130 PS) at 5500 min ⁻¹ (rpm)	178 Nm at 4500 min ⁻¹ (rpm)

^oTested in accordance with ISO 1585



which focus

You have seen how Ford Focus is engineered. Now take a look at our model range.

What is important to you? Is it the feel of a soft leather seat, more loadspace or extra power when you touch the accelerator? The model you choose can give you any one of them – or a combination of them all.

Each model is the same in terms of quality and value, but each is distinctive in what they do for your driving life.

choice

model choice ☐

options ☐

audio ☐

credit ☐

model choice

Ford Focus is available in a wide choice of models. There are three-door, four-door, five-door or estate body styles to choose from. Four responsive petrol engines and two smooth, refined, diesel engines power the range. Themed options enable you to add your own definition of extra comfort, style and luxury. A large choice but an easy one, once you make a key decision to go the style, luxury or sports route.

The Ford Focus RS is the pinnacle of the sporting range. Designed by motorsport enthusiasts for enthusiasts. For more details, please refer to the Ford Focus RS brochure.

style

Smart and practical, these models have all the inimitable style and dynamic excellence of the Ford Focus – and all the essential features you need to enjoy your driving.



ford**focus** CL



3, 5, Estate



1.4i, 1.6i



1.8 Duratorq TDDi (90 PS)

- Control Blade independent rear suspension
- Power-assisted steering
- ICE 4000 radio/cassette
- Central locking
- Body-coloured door mirror housings
- High-mounted rear brake light
- Front driver's and passenger's airbags*
- Power-operated front windows
- Rake and reach adjustable steering column
- Anti-submarining front seats

ford**focus** LX



3, 4, 5, Estate



1.4i, 1.6i, 1.6i auto, 1.8i



**1.8 Duratorq TDDi (90 PS)
1.8 Duratorq TDCi (115 PS)**

- CFC-free air conditioning (1.6i and above)
- Power-assisted steering
- 15" 8x2-spoke alloy wheels (1.6i and above)
- ICE 6000 radio/CD with column-mounted controls (1.6i and above)
- Remote central/double locking
- 'Quickclear' heated front windscreen
- Driver's seat manual height adjustment
- Titanium-effect grey facia

* **Note:** A rear-facing child seat should never be placed in the front passenger seat when the Ford vehicle is equipped with a front passenger's airbag.

option packs

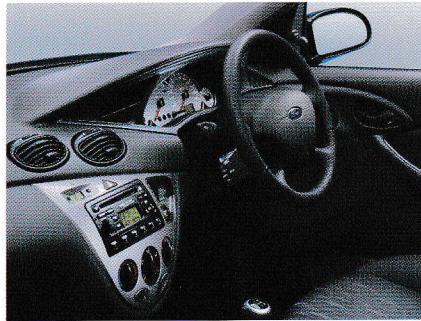
luxury

Luxury models put added emphasis on comfort. An impressive list of standard features and options gives extra definition to the ergonomic interior.



sports

The dynamic design of Ford Focus provides a perfect foundation for sporty style details, while a sports suspension puts the emphasis firmly on enjoyment.



reflex

Ford Focus has many safety features as standard, but for added reassurance, you can choose its Reflex Pack that comprises features to enhance Ford Focus' capacity to react to the unexpected.

Rear discs replace drums to increase the overall performance of the braking system. Anti-lock braking and traction control enable your Ford Focus to cope even better with slippery road conditions. Driver and front passenger safety is boosted by the addition of front side impact airbags*.

climate

An ideal cabin climate has two advantages. Firstly, it helps to keep everyone comfortable. Secondly, it enhances the driver's concentration and ability to see the road ahead.

The Ford Focus Climate Pack features CFC-free air conditioning, to keep the interior comfortably cool during warm weather. Additionally, all-weather visibility is enhanced with the addition of a 'Quickclear' heated windscreen with heated washer jets, and electrically-operated and heated door mirrors.

ford**focus** ghia



4, 5, Estate



1.6i, 1.6i auto, 1.8i, 2.0i, 2.0i auto



**1.8 Duratorq TDDi (90 PS)
1.8 Duratorq TDCi (115 PS)**

- CFC-free air conditioning
- Body colour bodyside mouldings and door handles
- Front fog lights
- 15" 12-spoke alloy wheels
- Power-operated and heated door mirrors
- 'Quickclear' heated front windscreen
- Woodgrain or blackwood-effect fascia
- Power-operated front and rear windows with global closing
- Three rear head restraints
- Driver's seat manual lumbar adjustment
- Leather-trimmed gear knob and steering wheel
- Driver's armrest
- ICE 6000 radio/CD with column-mounted controls (6006 6-disc CD on 2.0i and 115 PS TDCi)

ford**focus** zetec



3, 5, Estate

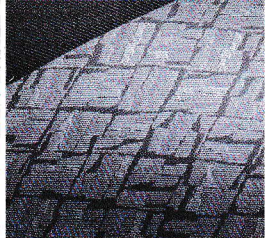


1.6i, 1.6i auto, 1.8i, 2.0i



**1.8 Duratorq TDDi (90 PS)
1.8 Duratorq TDCi (115 PS)**

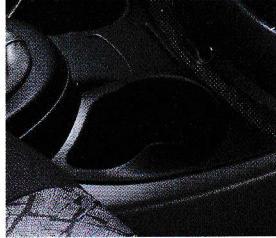
- Front fog lights
- 15" 5x2-spoke alloy wheels
- Body-coloured door mirror housings
- Metallic grey gear knob and door trim inserts
- Sports suspension
- ICE 6000 radio/CD with column-mounted controls (6006 6-disc CD on 2.0i)
- Power-operated front windows
- Graphite-effect instrument cluster controls with red pointers
- Metallic grey fascia
- Sports-style front seats
- Driver's seat manual height adjust
- Leather-trimmed steering wheel



High-quality seat trim.



Dials are large and easy to read.



A cup holder is located in the centre console.



Electric front windows feature one-shot lowering on the driver's side.



ford**focus** CL

You want a car, pure and simple. Wouldn't it be good to find a car that really excites you, a car that isn't just new but also different?

The Ford Focus CL is just such a car.

What sets it apart is a surprisingly full specification for its price. Features that incorporate advanced technology, like the Control Blade independent rear suspension. Driver's and front passenger's airbags* for safety provision beyond the expected. And a rewarding driving experience comes as standard, with features like power-assisted steering.

The Ford Focus CL has every essential feature and all the style of the Ford Focus range. It is an inspired choice.



• **Note:** A rear-facing child seat should never be placed in the front passenger seat when the Ford vehicle is equipped with a front passenger's airbag.

ford**focus** LX

The capacity for all the family and the weekly shop. The versatility to carry bicycles and babies at the same time. With style and handling ability that makes other drivers envious. That's the Ford Focus LX.

Its standard features include all those elements that help make journeys comfortable and driver-friendly, like air conditioning*, heated front windscreen and radio/CD-player*. It is easy to get in and out, load and unload, and you don't have to visit the petrol station as often as you might expect.

But above all, the Ford Focus LX is very satisfying to drive, with a performance that puts it far ahead of the average family car.

**1.6 LX and above.*





ford**focus** ghia

The welcome breeze of air conditioning on a hot day. The touch of the leather-covered steering wheel, which can be adjusted to your ideal driving position. Details can make all the difference.

That is why the Ford Focus Ghia is so appealing. Inside and out, from wood-effect door trim and facia, to body colour door handles it is designed to satisfy your craving for luxury and style.

If you want to surround yourself with luxury, the Ford Focus Ghia is for you.







ford**focus** ghia

Sometimes only the best will do, like leather-covered seating and heated front seats. These are just some of the features you can select for your Ford Focus Ghia – and a satisfying array of power-operated features are standard.

As you relax into the driver's seat and take in the graceful sweep of the facia, you will soon discover something that's even more rewarding: Ford Focus' intelligent, ergonomic design adds functional excellence to the luxury specification.



ford**focus** zetec

Whether your idea of fun is a relaxing weekend away from it all, or a Saturday night in town, drive the Ford Focus Zetec, and the enjoyment starts the minute you get behind the wheel. Sporty style cues inside and out, like its graphite-effect dials and sports-style front seats enhance its good looks. Moreover, its sports suspension allows you to make the most of its engine power and responsive handling.

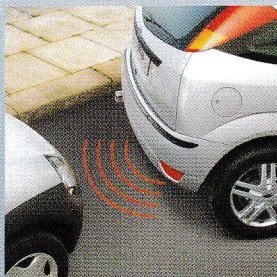
Added to its youthful appeal, it has all the practical and refined attributes of the Ford Focus range. So when you drive to work on Monday morning, you'll enjoy your journey just as much.







A parking distance sensor is located in the rear bumper. It helps the driver to safely judge parking distances by means of an audible warning.



personalisation

A wide range of options enables you to add individual emphasis to your Ford Focus. All items are made to meet Ford Focus' exacting standards of quality and durability.

Features like a mesh wire grille, rear spoiler, chromed exhaust trim and a variety of alloy wheels add extra sporty style to the Ford Focus. Other features such as a detachable tow bar, and roof rails with adjustable cross bars, increase the level of functionality.

The vehicles shown on this page are equipped with just some of the many available Ford Focus options. Please contact your Ford Dealer for further details about our options range. The choice is yours.



option packs

Ford Focus has a unique personality, but you can easily add your own definition to it.

If you want enhanced enjoyment, exclusive style or even greater levels of comfort, choose from a range of options that includes a power sunroof, xenon headlights and air conditioning with Electronic Automatic Temperature Control.

For added loadspace and flexibility, choose the Interior Versatility Pack on the 5-door or estate. This themed option pack features flat fold front passenger's seat, double map pocket on driver's seat, kangaroo pockets on front and rear seats, 40/20/40 split fold rear seat with centre armrest stowage, comfort head restraints (not driver's or centre rear), centre rear head restraint, reversible loadspace carpet. In addition on 5-door: package tray with stowage net and storage box, stowage nets in loadspace sidewalls and on estate: loadspace carrier roller net (only available with Midnight Black interior trim).

Optional features



Power-operated sunroof.



Air conditioning with Electronic Automatic Temperature Control.



A useful stowage net in the rear provides added storage space.



The centre rear armrest features an integral tray.



optional audio

You feel better about even the longest journeys when you're accompanied by your favourite music. Additionally, news and traffic reports keep you connected with the world outside. Our fully integrated audio systems, which incorporate the Radio Data System (RDS), can automatically cut in to whatever you're listening to on cassette or CD, keeping you up-to-date with essential traffic news.

extra security

All systems feature a detachable front bezel to deter theft and an anti-theft system 'Keycode'. For further peace of mind, the audio systems 5000 upwards allow the registration of a vehicle identification number into memory.



Model 4000 RDS radio/cassette player

- Four-channel radio/cassette player with a 4 x 7 watts (RMS) / 4 x 20 watts maximum power output • AM/FM radio • Stores 24 presets for AM/FM stations • Electronic search facilities • Station name display • Automatic volume control compatible, which ensures the volume is adjusted according to the vehicle speed



Model 5000 RDS/EON radio/cassette player

- Four-channel radio/cassette player with a 4 x 20 watts (RMS) / 4 x 42 watts maximum power output • AM/FM radio • Stores 24 presets for AM/FM stations • Electronic search facilities • Station name display • Programme Type (PTY) • Dolby noise reduction for tape cassette deck, plus auto reverse and music search • Automatic volume control compatible, which ensures the volume is adjusted according to the vehicle speed • Compatible with a 6-disc CD autochanger available as an option or accessory



Model 6000 RDS/EON radio/CD player

- Four-channel radio/single-CD player with a 4 x 20 watts (RMS) / 4 x 42 watts maximum power output • AM/FM radio • Stores 24 presets for AM/FM stations • Electronic search facilities • Station name display • Programme Type (PTY) • Automatic volume control compatible, which ensures the volume is adjusted according to the vehicle speed



Model 6006E RDS/EON radio/multi-CD player

- As 6000 model, with integrated 6-disc CD autochanger



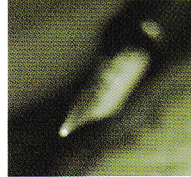
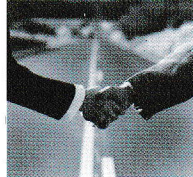
Blaupunkt TravelPilot

Combined stereo radio/CD/in-car navigation unit, featuring dynamic route guidance system with high-visibility display and easy-to-use controls

ford telematics

Ford Focus drivers now have a new, effective way to avoid stress and wasted journey time – Ford Telematics. Using the Vodafone network, this simple, hands-free communication system can help you to avoid traffic jams, let you speak to your family or even contact the emergency services. All without taking your eyes off the road.



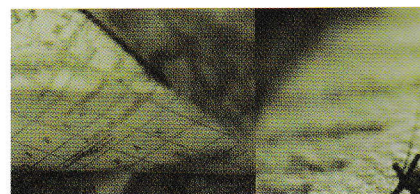


your complete financing solution across the entire ford range

As Ford's own bank, and a wholly-owned subsidiary of Ford Motor Company, Ford Credit provides vehicle finance to more than 7 million private and business customers worldwide. Here in Britain, Ford Credit offers you simplicity and choice through a wide range of finance and insurance packages. Ford Business Partner is a specialist division of Ford Credit offering a range of well-proven finance products for business customers. Here are the key features of our most popular packages generally available for your choice of vehicle from the extensive Ford range:

options

Options is designed to give you choice. Developed jointly by Ford Credit and Ford Motor Company in 1992, it continues to combine all of the benefits of traditional methods of financing to give you an attractive way to finance your Ford car.



conditional sale

Conditional Sale is the simple and traditional route to financing vehicle ownership. Convenient to arrange and with flexible terms to suit your needs, owning your Ford car has never been so easy.



ford business partner contract hire[†]

Contract Hire is the sure way of keeping a full quota of vehicles on the road every day, while keeping budget payments 100% predictable. With a fixed monthly rental, you have total budgetary control, and as the vehicle is off balance sheet, the commitment doesn't affect key financial metrics.



ford business partner flexible lease[†]

With Flexible Lease, your payments cover the use of the vehicle. Once all payments have been received, you can sell the vehicle as our agent and we will return the sale proceeds (less any monies owed to us) as a rebate of rentals.



insurance and maintenance plans

To help maintain and protect your investment, Ford Credit offers a variety of products to suit your needs and budget. Ford Insure* is a comprehensive motor insurance package exclusively designed for Ford owners, with everything you demand from an insurance policy – and more. Also available is the Protected Payments Plan* for worry-free motoring, Value Guaranteed Insurance* to protect your vehicle's value in the event of a total loss, and Ford Service Connect^Δ for additional servicing, warranty and RAC cover. Business customers are able to benefit from a range of insurance and maintenance plans designed for their specific needs.

for further details please contact your local ford dealer or
www.fordcredit.co.uk



Finance subject to status. Guarantees and indemnities may be required. Written quotations available on request: Freepost Ford Credit.
[†]Business Users only. ^ΔSubject to conditions.

*Insurance is underwritten by Norwich Union Insurance Limited, registered in England No. 99122. Member of the General Insurance Standards Council, member of the Insurance Ombudsman Bureau. Member of the Association of British Insurers.
Registered office at 8 Surrey Street, Norwich NR1 3NG.

technical data

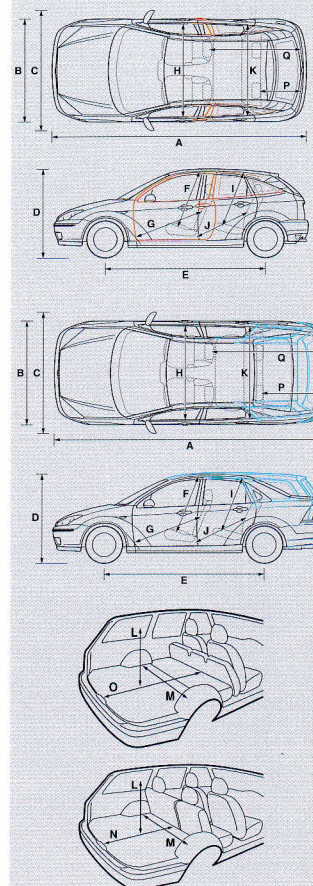
size and space

	3 & 5-door	4-door	Estate
Exterior (mm)			
A Overall length	4174	4382	4454
B Overall width without mirrors	1702	1702	1702
C Overall width with mirrors	1998	1998	1998
D Unladen height	1430	1429	1447
E Wheelbase	2615	2615	2615
Front track	1494	1494	1494
Rear track	1487	1487	1487
Interior (mm)			
Front/Rear			
F/I Headroom	995/982	997/978	997/1014
G Maximum leg room (front)	1095	1095	1095
J Minimum leg room (rear)	882	882	882
H/K Maximum shoulder room	1358/1362	1358/1362	1358/1362
Luggage Area (mm)			
L Maximum cargo height	850	538	913
M Maximum width between wheel arches	1050	1050	1156
N Loadspace length to back of rear seats*	880	1004	1048
O Loadspace length to back of front seats*	1450	1574	1658
Stowable Luggage (cu m)*			
P 5-seat mode	0.350	0.490	0.520
Q 2-seat mode (laden to roof)	1.205	N/A	1.580
Steering			
Wall to wall 10.9 m			
Fuel Tank			
55 litres (useable capacity)			
52.7 litres (useable capacity) diesel			

performance and economy

		CO ₂ emissions (g/km) ⁹⁰	Fuel consumption in L/100 km (mpg) ⁹⁰			Performance (Ford test figs.)		
			Urban	Extra urban	Combined	Max. speed mph	0-62 mph (secs)	31-62 ⁹⁹ mph (secs)
3-door Focus		Derivatives						
1.4i 16V Zetec	CL, LX	158	8.8 (32.1)	5.4 (52.3)	6.6 (42.8)	106	14.1	16.9
1.6i 16V Zetec	Zetec	165	9.4 (30.1)	5.5 (51.4)	6.9 (40.9)	115	10.9	15.2
1.6i 16V Zetec auto	Zetec	192	11.2 (25.2)	6.2 (45.6)	8.0 (35.3)	109	12.1	n/a
1.8i 16V Zetec	Zetec	181	10.2 (27.7)	6.0 (47.1)	7.6 (37.2)	123	10.2	13.4
2.0i 16V Zetec	Zetec	204	11.5 (24.6)	6.9 (40.9)	8.6 (32.8)	125	9.2	9.5
1.8 TDdi (90 PS)	Zetec	145	7.2 (39.2)	4.5 (62.8)	5.5 (51.4)	111	12.4	11.0
4-door Focus								
1.6i 16V Zetec	LX, Ghia	165	9.4 (30.1)	5.5 (51.4)	6.9 (40.9)	115	11.0	15.3
1.6i 16V Zetec auto	LX, Ghia	192	11.2 (25.2)	6.2 (45.6)	8.0 (35.3)	111	12.2	n/a
1.8i 16V Zetec	LX, Ghia	179	10.2 (27.7)	6.0 (47.1)	7.5 (37.7)	123	10.3	13.5
2.0i 16V Zetec	Ghia	205	11.6 (24.4)	6.9 (40.9)	8.6 (32.8)	125	9.3	9.6
2.0i 16V Zetec auto	Ghia	222	13.0 (21.7)	7.3 (38.7)	9.4 (30.1)	119	11.4	n/a
1.8 TDdi (90 PS)	LX, Ghia	144	7.2 (39.2)	4.4 (64.2)	5.4 (52.3)	112	12.5	11.1
1.8 TDCi (115 PS)	Ghia	144	7.2 (39.2)	4.4 (64.2)	5.4 (52.3)	122	10.7	9.5
5-door Focus								
1.4i 16V Zetec	CL, LX	158	8.8 (32.1)	5.4 (52.3)	6.6 (42.8)	106	14.4	16.7
1.6i 16V Zetec	Zetec, LX, Ghia	165	9.4 (30.1)	5.5 (51.4)	6.9 (40.9)	115	11.2	15.5
1.6i 16V Zetec auto	Zetec, LX, Ghia	192	11.2 (25.2)	6.2 (45.6)	8.0 (35.3)	109	12.1	n/a
1.8i 16V Zetec	Zetec, LX, Ghia	181	10.2 (27.7)	6.0 (47.1)	7.6 (37.2)	123	10.3	13.5
2.0i 16V Zetec	Zetec	209	11.7 (24.1)	7.0 (40.4)	8.8 (32.1)	125	9.3	9.6
2.0i 16V Zetec	Ghia	207	11.6 (24.4)	6.9 (40.9)	8.7 (32.5)	125	9.3	9.6
2.0i 16V Zetec auto	Ghia	222	13.1 (21.6)	7.3 (38.7)	9.4 (30.1)	117	11.8	n/a
1.8 TDdi (90 PS)	CL	143	7.2 (39.2)	4.4 (64.2)	5.4 (52.3)	111	12.4	11.0
1.8 TDdi (90 PS)	Zetec, LX, Ghia	145	7.2 (39.2)	4.5 (62.8)	5.5 (51.4)	111	12.4	11.0
1.8 TDCi (115 PS)	Zetec, LX, Ghia	145	7.2 (39.2)	4.5 (62.8)	5.5 (51.4)	122	10.7	9.5

*Measured using the VDA method.
*At floor level



**In 4th gear.
**All CO₂ emissions figures in g/km and fuel consumption figures in L/100 km are from officially approved tests in accordance with EEC Directive 93/116/EC.

The CO₂ emissions and fuel consumption test figures shown in the chart do not express or imply any guarantee of the fuel consumption of a car of the class in question. All the figures are based on tests conducted on vehicles with standard wheels and tyres; optional or accessory wheels and tyres may have an effect on the emissions and fuel consumption of a vehicle.

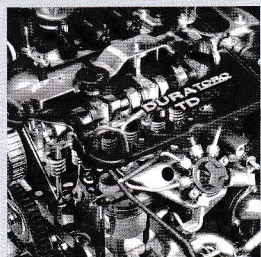
Note:

Urban An engine started from cold in laboratory conditions operated at varying speeds, maximum 31 mph, average 12 mph over a theoretical distance of 2.5 miles (4 km).

Extra Urban Conducted immediately after the urban cycle, it consists of half steady speed driving and half varying speed driving, maximum 75 mph over a distance of 4.3 miles (7 km).

Combined This is an average of the two parts of the test, weighted by the distances covered in each part. All vehicles are 5-speed manual unless auto stated. All petrol engines are equipped with a catalytic converter.

TDCi diesel technology



The 115 PS 1.8-litre Ford Duratorq TDCi has state-of-the-art, second-generation common-rail injection. With a peak torque of 250 Nm at 1,850 rpm and a unique transient 'overboost' feature for improved performance response, it contributes significantly to an acknowledged Ford Focus strength: driving quality.

**In 4th gear.

°All CO₂ emissions figures in g/km and fuel consumption figures in L/100 km are from officially approved tests in accordance with EEC Directive 93/116/EC.

The CO₂ emissions and fuel consumption test figures shown in the chart do not express or imply any guarantee of the fuel consumption of a car of the class in question. All the figures are based on tests conducted on vehicles with standard wheels and tyres; optional or accessory wheels and tyres may have an effect on the emissions and fuel consumption of a vehicle.

Note:

Urban An engine started from cold in laboratory conditions operated at varying speeds, maximum 31 mph, average 12 mph over a theoretical distance of 2.5 miles (4 km).

Extra Urban Conducted immediately after the urban cycle, it consists of half steady speed driving and half varying speed driving, maximum 75 mph over a distance of 4.3 miles (7 km).

Combined This is an average of the two parts of the test, weighted by the distances covered in each part. All vehicles are 5-speed manual unless auto stated. All petrol engines are equipped with a catalytic converter.

Note: All vehicles are 5-speed manual unless auto stated. All petrol engines are equipped with a catalytic converter.

Towing limits quoted represent the maximum towing ability of the vehicle at its Gross Vehicle Mass to restart on a 12 per cent gradient at sea level. The performance and economy of all models will be reduced when used for towing. Nose weight limit is a maximum of 75 kg on all models. For further guidance, refer to the National Caravan Council's Towing code.

Roof rack load is a maximum of 75 kg on all 3, 4 and 5-door models and 100 kg on estate models.

performance and economy (continued)

		CO ₂ emissions (g/km) ^{oo}	Fuel consumption in L/100 km (mpg) ^{oo}			Performance (Ford test figs.)		
			Urban	Extra urban	Combined	Max. speed mph	0-62 mph (secs)	31-62** mph (secs)
5-door Estate								
1.6i 16V Zetec	CL	163	9.4 (30.1)	5.4 (52.3)	6.8 (41.5)	115	11.3	16.0
1.6i 16V Zetec	Zetec, LX	165	9.4 (30.1)	5.5 (51.4)	6.9 (40.9)	115	11.3	16.0
1.6i 16V Zetec auto	Zetec, LX, Ghia	200	11.5 (24.6)	6.6 (42.8)	8.4 (33.6)	109	12.5	n/a
1.8i 16V Zetec	Zetec, LX, Ghia	184	10.4 (27.2)	6.1 (46.3)	7.7 (36.7)	123	10.7	13.8
2.0i 16V Zetec	Zetec	207	11.7 (24.1)	7.0 (40.4)	8.7 (32.5)	125	9.6	9.7
2.0i 16V Zetec	Ghia	205	11.6 (24.4)	6.9 (40.9)	8.6 (32.8)	125	9.6	9.7
2.0i 16V Zetec auto	Ghia	222	13.1 (21.6)	7.3 (38.7)	9.4 (30.1)	117	11.8	n/a
1.8 TDdi (90 PS)	CL	143	7.2 (39.2)	4.4 (64.2)	5.4 (52.3)	110	12.8	11.4
1.8 TDdi (90 PS)	Zetec, LX, Ghia	145	7.2 (39.2)	4.5 (62.8)	5.5 (51.4)	110	12.8	11.4
1.8 TDCi (115 PS)	Zetec, LX, Ghia	145	7.2 (39.2)	4.5 (62.8)	5.5 (51.4)	122	11.0	9.7

model choice & weights and loads

Kerbweights (kg)*	CL	Zetec	LX	Ghia	Gross Vehicle Mass (GVM) (kg)	Max. towing limit at (GVM) (kg)
3-door Focus						
1.4i 16V Zetec	1150		1150		1570	940
1.6i 16V Zetec		1158			1570	1200
1.6i 16V Zetec auto ^{**}		1188			1595	1000
1.8i 16V Zetec		1200			1620	1200
2.0i 16V Zetec		1217			1640	1200
1.8 TDdi (90 PS)		1272			1685	1200
4-door Focus						
1.6i 16V Zetec			1175	1206	1595	1200
1.6i 16V Zetec auto ^{**}			1206	1221	1620	1000
1.8i 16V Zetec			1215	1234	1650	1200
2.0i 16V Zetec				1276	1670	1200
2.0i 16V Zetec auto ^{**}				1291	1670	1200
1.8 TDdi (90 PS)			1288	1321	1725	1200
1.8 TDCi (115 PS)				1328	1725	1300
5-door Focus						
1.4i 16V Zetec	1163		1163		1585	940
1.6i 16V Zetec		1171	1167	1197	1590	1200
1.6i 16V Zetec auto ^{**}		1200	1189	1217	1615	1000
1.8i 16V Zetec		1195	1195	1214	1650	1200
2.0i 16V Zetec		1242		1266	1670	1200
2.0i 16V Zetec auto ^{**}				1280	1670	1200
1.8 TDdi (90 PS)	1280	1286	1280	1311	1710	1200
1.8 TDCi (115 PS)		1293	1288	1318	1720	1300
5-door Estate						
1.6i 16V Zetec	1180	1187	1180		1635	1200
1.6i 16V Zetec auto ^{**}		1230	1227	1263	1660	1000
1.8i 16V Zetec		1246	1238	1274	1695	1200
2.0i 16V Zetec		1276		1303	1715	1200
2.0i 16V Zetec auto ^{**}				1308	1715	1200
1.8 TDdi (90 PS)	1295	1301	1295	1313	1755	1200
1.8 TDCi (115 PS)		1317	1311	1347	1760	1300

** = Optional transmission

*Represents the lightest kerbweight assuming the driver at 75 kg, full fluid levels and fuel levels, and subject to manufacturing tolerances and options, etc., fitted.

Note: When ordering heavy-duty and self-levelling suspension, Gross Vehicle Mass (GVM) increases by 50 kg.

technical data

E = Exceeds security requirement for model concerned and group rating has been reduced.

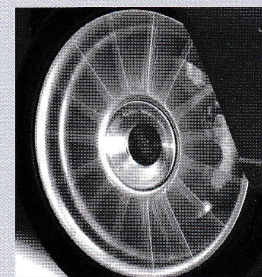
insurance groups

	CL	Zetec	LX	Ghia
1.4i 16V Zetec	4E		tba	
1.6i 16V Zetec	5E	5E	5E	6E
1.6i 16V Zetec auto		5E	5E	6E
1.8i 16V Zetec		7E	6E	7E
2.0i 16V Zetec		8E		8E
2.0i 16V Zetec auto				tba
1.8 TDDi (90 PS)	5E	5E	5E	6E
1.8 TDCi (115 PS)		6E	6E	7E

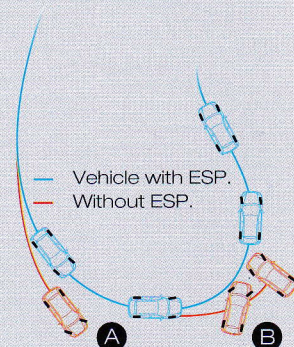
exterior features

	CL	Zetec	Zetec 2.0i	LX	Ghia	Ghia 2.0i/115 PS TDCi
Exterior Appearance and Styling						
Bodyside mouldings – Body colour					-	-
Bumpers – Body colour	-	-	-	-	-	-
Door mirrors – Manual internal control, body colour housings, manual fold back	-	-		-		
Door mirrors – Electrically-operated and heated, body colour housings			-		-	-
Door handles – Body colour					-	-
Radiator grille – Black, mesh	-	-	-	-	-	-
Radiator grille – Body colour surround					-	-
Wheels – Mini 'space saver' steel spare	-	-	-	-	-	-
Wheels – 5½x14" steel with 5-spoke wheelcovers and 185/65 Rx14 tyres (1.4i only on LX)	-			-		
Wheels – 6x15" 5x2-spoke alloy with 195/60 Rx15 tyres		-				
Wheels – 6x15" 8x2-spoke alloy with 195/60 Rx15 tyres (not available on 1.4i)				-		
Wheels – 6x15" 12-spoke alloy with 195/60 Rx15 tyres					-	-
Wheels – 6½x16" 5x2-spoke alloy with 205/50 Rx16 tyres			-			
Exterior Functional						
Diagonally-split brakes with dual-line servo-assistance and ventilated front discs	-	-	-	-	-	-
Rear brakes – Drums	-	-		-	-	
Rear brakes – Discs			-			-
Anti-lock brakes (ABS) with rear discs (115 PS TDCi estate only)		-		-		-
Anti-lock brakes (ABS) with traction control system (TCS)			-			-
Heated rear window	-	-	-	-	-	-
Heated windscreen – 'Quickclear' – with heated washer jets			-	-	-	-
Power-assisted rack-and-pinion steering	-	-	-	-	-	-
Roof rails (estate only)	-	-	-	-	-	-
Front suspension – Independent with MacPherson struts, angled coil/spring damper units and lower A-arms, anti-roll bar	-	-	-	-	-	-
Rear suspension – Independent Control Blade multi-link system, anti-roll bar	-	-	-	-	-	-
Sports suspension		-	-			
Wipers – Front, two-speed plus intermittent with electric wash	-	-	-	-		
Wipers – Front, two-speed plus variable interval intermittent with electric wash					-	-
Wipers – Tailgate wiper plus intermittent with electric wash (not 4-door)	-	-	-	-	-	-
Exterior Lighting						
Front fog lights		-	-		-	-
Rear fog light, reversing light, high-mounted rear brake light	-	-	-	-	-	-
Safety and Security						
Airbags – Driver's and front passenger's*	-	-	-	-	-	-
Fuel cut-off – Inertia switch (petrol only)	-	-	-	-	-	-
Immobiliser – Safeguard Passive Anti-Theft System (PATS)	-	-	-	-	-	-
Locks – High-security, anti-burst, shielded with strengthened mountings and childproof locks on rear doors	-	-	-	-	-	-

ride quality



The four-channel ABS applies and releases the brakes up to 12 times per second for optimum braking effect without loss of steering. Traction control delivers low-speed brake intervention coupled with a cut in engine power.

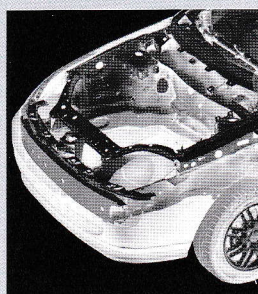


A Vehicle experiences understeer on approach.

B Vehicle experiences oversteer on exit to bend.

A system of sensors monitors steering wheel movements, road speed and even sideways travel of the car. When these forces threaten a skid or spin, ESP makes corrections to individual wheels to help stabilise the car and optimise roadholding.

structural quality



A cross-car beam stiffens the safety cage, minimises the steering column's rearward movement in a frontal impact, and provides a stable platform for the driver's airbag. Lower side rails are formed in high-strength steel. Precisely defined 'crumple properties' ensure crash energy is absorbed progressively ahead of the highly rigid inner safety cage.



A highly stable cross-member channels crash energy into the lower side rails, spreading loads to maximise absorption. New levels of design efficiency give Ford Focus a body that is one of the stiffest in the class (826 kNm/rad) yet also the lightest (1070 kg). The combination is achieved through laser-welding, optimised panel gauges, extensive swaging, local reinforcement of critical points and optimised spot-weld distribution. Cross-member and powertrain pick-up points are as much as 150% stiffer than surrounding areas.

exterior features (continued)

	CL	Zetec	Zetec 2.0i	LX	Ghia	Ghia 2.0i/115 PS TDCi
Safety and Security						
Locks – Central locking	-					
Locks – Remote central/double locking		-	-	-	-	-
Locking fuel filler door	-	-	-	-	-	-
Side impact door beams, front and rear. Steel safety cage	-	-	-	-	-	-
Vehicle Identification Number (VIN) – Visible	-	-	-	-	-	-

interior features

	CL	Zetec	Zetec 2.0i	LX	Ghia	Ghia 2.0i/115 PS TDCi
Instruments and Controls						
Instrument cluster – Black dials with orange pointers	-			-	-	-
Instrument cluster – Grey metallic dials with red pointers		-	-			
Headlight levelling control	-	-	-	-	-	-
Illuminated heater controls – 4-speed fan, pollen filter.						
Four MicronAir filtered vents with temperature and direction control. Windscreen defrost vents including wiper park defrost capability	-	-	-	-	-	-
Steering column – Reach and rake adjustable	-	-	-	-	-	-
Tailgate/boot release – Interior power release	-	-	-	-	-	-
Trip computer – Fuel computer, ambient temperature display, low temperature warning lights and low windscreen wash indicator						-
Warning indicators for glow plugs on (diesel only), brake system, airbags, door ajar, low fuel level and 'lights on' warning alarm	-	-	-	-	-	-
Seats and Seat Belts						
Front seat – Driver's manual height adjustment	-	-	-	-		
Front seat – Driver's power height adjustment					-	-
Front seat – Driver's lumbar adjustment					-	-
Front seats – Anti-submarining, fully reclining with height-adjustable head restraints	-	-	-	-	-	-
Front seats – Tipping (3-door only)	-	-	-	-		
Front seats – Sports-style		-	-			
Front seat – Driver's armrest					-	-
Rear seat – 60:40 split back and cushion with two height-adjustable head restraints and headrest stowage	-	-	-	-	-	-
Rear seat – Centre 3rd rear head restraint		-	-	-	-	-
Rear seat – Folding centre armrest					-	-
Seat belts – Front, inertia reel, with grabbers, pre-tensioners and height-adjustable mounts.	-	-	-	-	-	-
Rear, three inertia reel, lap and diagonal						
Carpet and Trim						
Carpet floor mats					-	-
Gear lever knob – Medium grey metallic		-	-			
Gear lever knob – Leather with chrome surround (chrome button on auto)					-	-
Centre stack bezel – Titanium-effect grey		-	-	-		
Titanium-effect grey door trim inserts		-	-			
Wood-effect door trim inserts, centre stack bezel and console top plate (Black Cordia dark wood with Midnight Black interior trim)					-	-
Scuff plates – Front, bright with Ghia script					-	-
Steering wheel – Leather-trimmed		-	-		-	-
Comfort and Convenience						
Accessory socket/stowage tray	-	-	-	-	-	-
Air recirculation switch	-	-	-	-	-	-
Air conditioning – CFC-free (not available on LX 1.4i)			-	-	-	
Air conditioning – CFC-free with Electronic Automatic Temperature Control (EATC)						-

options available at extra cost (continued)

	CL	Zetec	Zetec 2.0i	LX	Ghia	Ghia 2.0i/115 PS TDCi
Audio						
Stereo radio/CD – Model 6006N RDS EON, 6-disc in-dash mounted CD autochanger with remote column-mounted controls, removable control panel, 'Keycode' anti-theft coding, 4 speakers (not available on LX 1.4i)		-		-	-	
Radio Navigation System – Monochrome display and underseat CD autochanger (not available on LX 1.4i)		-	-	-	-	-
Telematics – Provides SOS, roadside/operator assistance, traffic information and telephone call services (not available with 4000N radio/cassette)		-	-	-	-	-
Body Colour						
Metallic paint	-	-	-	-	-	-

*Note: A rear-facing child seat should never be placed in the front passenger seat when the Ford vehicle is equipped with a front passenger's or side airbags.

options packs

	CL	Zetec	Zetec 2.0i	LX	Ghia	Ghia 2.0i/115 PS TDCi
Climate Pack – CFC-free air conditioning, heated windscreen – 'Quickclear' – with heated washer jets and electrically-operated and heated door mirrors						
	-	-				
Interior Versatility Pack (5-door and estate only) – Flat fold front passenger's seat, double map pocket on driver's seat, kangaroo pockets on front and rear centre seats, 40/20/40 split fold rear seat with centre armrest stowage, comfort head restraints (not driver's or centre rear), centre rear head restraint, reversible loadspace carpet. In addition on 5-door: package tray with stowage net and storage box, stowage nets in loadspace sidewalls and on estate: loadspace carrier roller net (only available with Midnight Black interior trim)						
		-	-	-		
Reflex Pack – Anti-lock brakes, rear discs in lieu of drums, traction control and front side impact airbags* (not available on 115 PS TDCi estate)						
	-	-		-	-	
Smokers' Pack – Ashtray and lighter replace stowage tray and power point						
	N/C	N/C	N/C	N/C	N/C	N/C
Zetec Styling Pack – Leather trim, heated front seats and metallic paint						
		-	-			
Ghia Styling Pack – Leather trim, heated front seats and metallic paint						
					-	-

N/C = No cost option

personal choice

Ford Focus has a wide choice of paint finishes. Each shade is water-based, so as well as creating a deep, lustrous finish, they're kinder to the environment. They are matched by a fine collection of fabric and leather trims.

body colour and trim availability

	CL	Zetec	LX	Ghia
Seat Trim	Match	Harlequin Perforated leather*	Martre Bussac	Perforated leather*
Solids				
Capri Blue	B	B	B	B/G B/P B
Diamond White	B	B	B	B/G B/P B
Colorado Red	B	B	B	B/G B/P B
Metallics*				
Metropolis Blue	B	B	B	B/G B/P B
Neptune Green	B	B	B	B/G B/P B
Moon dust Silver	B	B	B	B/G B/P B
Panther Black	B	B	B	B/G B/P B
Pepper Red	B	B	B	B/G B/P B
State Blue	B	B	B	B/G B/P B
Jewel Green	B	B	B	B/G B/P B

INTERIOR FABRIC COLOUR: B – Midnight Black, G – Medium Dark Graphite,

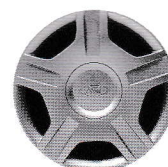
P – Medium Parchment, / – Choice of colour

*Metallic paint and perforated leather trim are optional at extra cost.

wheel trims and alloy wheels



14" 5-spoke wheelcover (CL)



14" 5-spoke wheelcover (LX 1.4i)



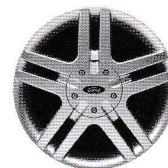
15" 5 x 2-spoke alloy (Zetec)



15" 8 x 2-spoke alloy (LX 1.6i and above)



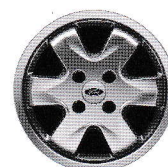
15" 12-spoke alloy (Ghia)



16" 5 x 2-spoke alloy (Zetec 2.0i)



15" Vario-Y alloy (optional on Zetec (not 2.0i) and Ghia)



15" 6-spoke star design alloy (optional on CL, Zetec (not 2.0i) and Ghia)

metallic body colours



panther black



metropolis blue



capri blue



pepper red



neptune green



diamond white



state blue



moondust silver



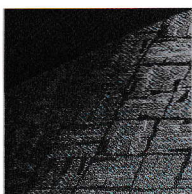
colorado red



jewel green

Note: Colours and trims reproduced on this page may vary from the actual colours, due to the limitations of printing processes used.

trim sets



match in
midnight black



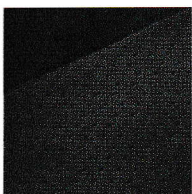
martre in
midnight black



martre in medium
dark graphite



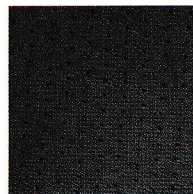
harlequin in
midnight black



bussac in
midnight black



bussac in medium
parchment



perforated leather in
midnight black



BY APPOINTMENT TO
HER MAJESTY THE QUEEN
MOTOR VEHICLE MANUFACTURERS
FORD MOTOR COMPANY LIMITED
BRENTWOOD ESSEX



BY APPOINTMENT TO
H.M. QUEEN ELIZABETH THE QUEEN MOTHER
MOTOR VEHICLE MANUFACTURERS
FORD MOTOR COMPANY LIMITED
BRENTWOOD ESSEX



BY APPOINTMENT TO
H.R.H. THE PRINCE OF WALES
MOTOR VEHICLE MANUFACTURERS
FORD MOTOR COMPANY LIMITED
BRENTWOOD ESSEX

the ford feature model

To simplify your decision-making, we now offer a Ford Feature Model for each range. Each Ford Feature Model includes, as standard, the most popular features from the range. Most importantly, Ford Feature Models give you great value for money.

UEFA champions league

Ford. Your dependable football companion that takes you all the way there and back on your football journey. Destination Football.

forddrive

The easiest way to get to know your preferred Ford Feature Model is through our Ford Drive Demonstration Programme. This gives you a complete test drive experience professionally and efficiently, with the services of your own Ford Drive co-ordinator.

fordmobility

MAGIC (Mobility and General Information Centre) is a Ford-dedicated care centre created to provide free and comprehensive information on all motoring and mobility issues to anyone requiring such assistance. In particular, if you are a recipient of HRDLA, elderly or a carer, you will find MAGIC an invaluable one-stop shop for all sorts of information. For example, MAGIC provides information on the Ford Dealer network, Ford vehicle information – detailing dimensions such as door heights and widths, as well as pricing, comparisons with other manufacturers' vehicles, assessment centres, vehicle adaptations, charities, even holiday information.

MAGIC has many special offers for HRDLA recipients, call free on 0800 240 241.

ford service connect

Every new Ford car sold from October 2000 is protected by 12 months' unlimited mileage manufacturer's warranty, plus the option of extending this warranty with a no-cost 3-year/60,000 miles Ford Service Connect Plan. (For Escort and prior model Mondeo, the no-cost warranty extension applies to retail customers only.) Plan upgrades are also available, giving you the option of worry-free motoring for up to 5 years.

fordjourney

For a straightforward, quick and worry-free way to buy a new Ford online, visit **www.fordjourney.com**. Offering you access to the widest selection of new Ford cars available on the Internet, and fast delivery, Ford Journey puts you in control.

ford rapid fit

The national fast-fit network backed by Ford, offering you the convenience of a 'no-appointment-necessary, while-you-wait' service covering tyres, exhausts, brakes, batteries and much more. There are over 300 sites nationwide.

ford accident repair centres

If your Ford is involved in an accident, your Ford Dealer is best placed to return it to its pre-accident condition. Dealerships displaying the Ford Accident Repair Centre sign all meet the rigorous customer service and repair quality standards laid down by Ford, and offer a three-year workmanship guarantee.

ford customer relationship centre

In the unlikely event that your Ford Dealer can't help you or you need to speak to Ford directly, the Ford Customer Relationship Centre is just a phone call away. Call local rate **0845 841 1111**.

The Government fuel figures do not express or imply any guarantee of the fuel consumption of any particular car. The cars themselves have not been tested and there are inevitably differences between individual cars of the same model. In addition, a car may incorporate particular modifications. Furthermore, the driver's style and road and traffic conditions, as well as the extent to which the car has been driven and the standard of maintenance, will affect its fuel consumption.

Insurance Groups are only as recommended by the Association of British Insurers. You should always consult your insurance adviser for confirmation.

Illustrations, descriptions and specifications.

This catalogue was correct at the time of going to print. However, Ford policy is one of continuous product development. The right is reserved to change specifications, colours and prices of the models and items illustrated and described in this publication at any time. For the latest details always consult your Ford Dealer.

Optional Equipment. Throughout this publication, wherever a feature is described as being an 'Option' or 'Optional Fitment/Pack' etc, you should assume that it will be at extra cost to the base vehicle, unless specifically stated to the contrary.

All models and colour combinations are subject to availability.

BJN 16824. Designed and produced by Burrows, Shenfield, Essex, England. Produced by Werbeagentur Zetweka. PN 172511/0111/500m/GB

Published by Ford Motor Company Limited, Brentwood, Essex, England.
Registered in England No 235446.
FA 1335/7 November 2001.

© Ford Motor Company Limited.

www.ford.co.uk

Dealer:

